

# Institute of Natural Medicine Certificate of Analysis

## Suppositories 500mg CBD Women Phase

Institute of Natural Medicine Aps  
Ådalen 38, 7760 Hurup Thy, Denmark  
Phone: +45-535-573-37

[ionmaps@protonmail.com](mailto:ionmaps@protonmail.com)

HACCP certified; GMP certified

Responsible Supervisor: dr. Osvaldas P.

Sample Batch 3216

Date samples received: 22-July 2025

Date analysis began: 22-July 2025

Date sample report produced: 26-July 2025

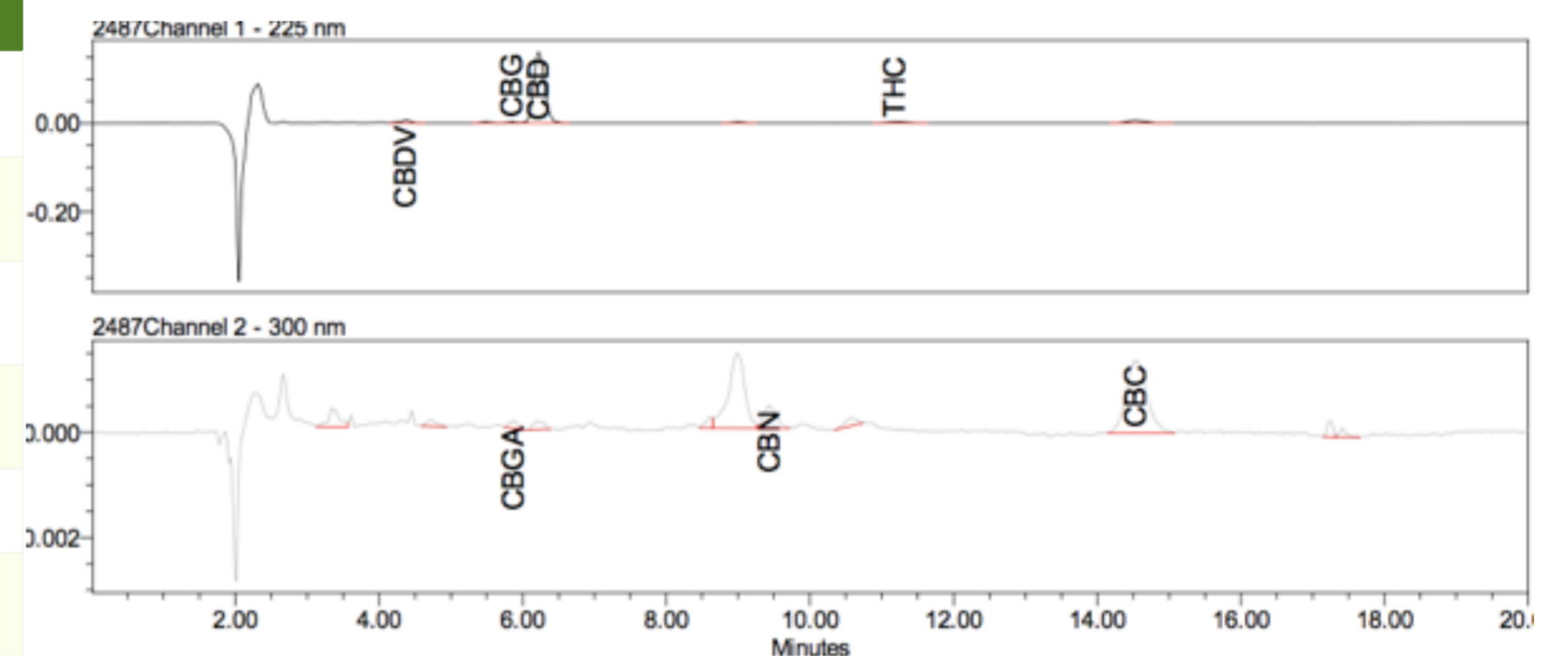
Expiry date: 07-2027

Sample amount: 1g

## Cannabinoid Profile

Component	Method	Specification (%)	Result (%)
CBD	PR40	≥2.7	3.18
CBDA	PR40	N.A.	ND
CBDV	PR40	N.A.	0.05
CBG	PR40	N.A.	0.10
CBGA	PR40	N.A.	ND
CBN	PR40	N.A.	0.06
CBC	PR40	N.A.	0.14
Δ9THC +THCA	PR40	≤0.2	0.11
Total CBD		≥2.7	3.18

## Method: HPLC-UV



ND - Not detected, LOD - Limit of Detection (LOD=0.001%), N.A. - Limits not applicable

## PHYSICAL PROPERTIES

Parameter	Method	Specification	Results
Appearance	PR 55	Light brown	Conforms
Appearance (form at RT)	PR55	Solid	Conforms
Melting point	PR69	35°C - 39 °C	Conforms
Purity	PR40	Complies to HPLC spectrum	Conforms

## MICROBIAL PROFILE

Component	Method	Specification	Results
<i>Listeria m.</i>	ISO 11290-1:2017	ND / 25 g	ND*
<i>Escherichia c.</i>	ISO 16649-3:2015	ND / g	ND*
<i>Salmonella</i>	ISO 6579-1:2017	ND / 25 g	ND*
<i>Staphylococcus</i>		ND / g	ND*
<i>Yeast</i>	ISO 7954:1999 (W)	NMT 100 cfu/g	< 1.0x10 <sup>1</sup>
<i>Mould</i>			< 1.0x10 <sup>1</sup>
<i>Total microorganism</i>	EN ISO 21528-2:2017	NMT 1000 cfu/g	< 1.0x10 <sup>3</sup>

\*ND - Not detected, CFU - Colony forming unit

## MYCOTOXIN PROFILE

Component	Method	Specification	Result
<i>Aflatoxin B1</i>	PN-EN 14123:2008	NMT 2 µg/kg	<LOQ
<i>Aflatoxin B2</i>	PN-EN 14123:2008	NMT 2 µg/kg	<LOQ
<i>Aflatoxin G1</i>	PN-EN 14123:2008	NMT 2 µg/kg	<LOQ
<i>Aflatoxin G2</i>	PN-EN 14123:2008	NMT 2 µg/kg	<LOQ
<i>Sum of aflatoxins B1, B2, G1, G2</i>		NMT 4 µg/kg	<LOQ
<i>Ochratoxin A</i>	PB-456 ed. I of 15.10.2021	NMT 20 µg/kg	<LOQ

LOQ - Limit of quantitation, NMT - Not more than

## Heavy Metals Profile:

Component	Method	Specification	Result
Arsenic (As)	PN-EN 15763:2009	NMT 3.0 ppm	<LOQ
Cadmium(Cd)	PN-EN 15763:2010	NMT 0.5 ppm	<LOQ
Lead(Pb)	PN-EN 15763:2010	NMT 5.0 ppm	<LOQ
Mercury (Hg)	PN-EN 15763:2010	NMT 0.5 ppm	<LOQ
Chromium (Cr)	PN-EN 15763:2010	NMT 2.0 ppm	<LOQ
Tin (Sn)	PN-EN 15763:2010	NMT 2.0 ppm	<LOQ