



Black Tie

Sample 214-022422-140

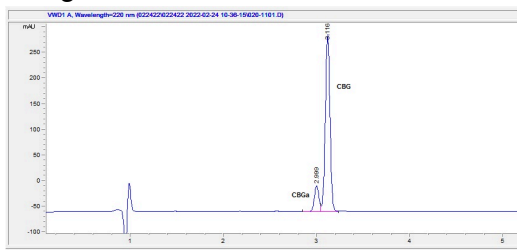
CBG Capsule

Sample Submitted: 02-24-2022; Report Date: 02-26-2022

nullSample Unit Size: 0.25 g

## CBG Capsule

### Chromatogram



### Cannabinoid Profile



### Cannabinoid Profile by HPLC

**0.00%**  
Calculated THC Yield

**0.00%**  
Calculated CBD Yield

**46.51%**  
Total Cannabinoids

Cannabinoid	% wt	mg/unit
CBGA	5.1	12.75
CBG	41.41	103.52
<b>Total Cannabinoids</b>	<b>46.51</b>	<b>116.3</b>
<b>Calculated THC Yield</b>	<b>0.00</b>	<b>0.00</b>
<b>Calculated CBD Yield</b>	<b>0.00</b>	<b>0.00</b>

Calculated Maximum THC Yield = THC + 0.877 \* THCA  
Calculated Maximum CBD Yield = CBD + 0.877 \* CBDA

**Marin Analytics, LLC**  
250 Bel Marin Keys Blvd, Suite D4  
Novato, CA 94949  
415-936-6477 / sarabiancalana1@gmail.com

*Sara Biancalana*  
**Sara Biancalana**  
Chief Scientist

This sample has been tested by Marin Analytics, LLC using valid testing methodologies and a quality system. Values reported relate only to the sample tested. Marin Analytics, LLC makes no claims as to the efficacy, safety or other risks associated with any detected or non-detected levels of any compounds reported herein. This Certificate shall not be reproduced except in full, without the written approval of Marin Analytics, LLC.