

CONSOLIDATED TEST RESULTS SUMMARY

Please see the following pages for full test results.

BULK SKU	BATCH #	LOQ: Limit Of Quantitation	
PRODUCT NAME	SERVING SIZE	LOD: Limit Of Detection	
LABORATORY :	OREGON ACCREDITATION: OR100028	1 g = 10 ⁻³ kg = 10 ³ mg = 10 ⁶ µg 1 mg/kg = 1 ppm = 1000 ppb	
POTENCY	PER SERVING	PER GRAM	Percent
Cannabidiol (CBD)	mg/serving	mg/g	%
Total THC (d9-THC, THCA)	mg/serving	mg/g	%
Cannabigerol (CBG)	mg/serving	mg/g	%
Cannabinol (CBN)	mg/serving	mg/g	%
Cannabichromene (CBC)	mg/serving	mg/g	%
Tetrahydrocannabinolic Acid (THCA)	mg/serving	mg/g	%
Delta-9-THC (d9-THC)	mg/serving	mg/g	%
Delta-8-THC (d8-THC)	mg/serving	mg/g	%
HEAVY METALS	PER SERVING	PER GRAM	REGULATORY ACTION LEVEL
Arsenic	µg/serving	µg/g	10 µg/day ^[1]
Cadmium	µg/serving	µg/g	4.1 µg/day ^[1]
Lead	µg/serving	µg/g	6 µg/day ^[1]
Mercury	µg/serving	µg/g	2 µg/day ^[1]
PESTICIDES	REGULATORY ACTION LEVEL		
None of the other 59 pesticides tested found above limit of detection in the sample.	10 ppb ^[1]		
RESIDUAL SOLVENTS	Results	REGULATORY ACTION LEVEL	
Ethanol	µg/g	50,000 mg/day	
Heptane	µg/g	50,000 mg/day	
None of the 34 residual solvents tested found above limit of quantitation in the sample.			
MICROBIAL	PASS/FAIL		
Yeast & Mold	Pass		
Coliform	Pass		
TERPENES	% OF SAMPLE		
Farnesene	%		
β-Caryophyllene	%		
α-Bisabolol	%		
Guaiol	%		
Humulene	%		
Caryophyllene Oxide	%		



1. American Herbal Pharmacopoeia. (2014). Cannabis Inflorescence: Standards of Identity, Analysis, and Quality Control. Washington DC: AHP.



12423 NE Whitaker Way
 Portland, OR 97230
 503-254-1794



Report Number: 23-006471/D012.R000
Report Date: 06/22/2023
ORELAP#: OR100028
Purchase Order:
Received: 05/31/23 16:23

Customer: Etz Hayim Holdings
Product identity: FORM-SG100.V2-
Client/Metric ID: FE32-23081101.
Laboratory ID: 23-006471-0004

Summary

Potency:

Analyte per 1g	Result	Limits	Units	Status	
CBC per 1g	10.3		mg/1g		CBD-Total per Serving Size 259 mg/1g
CBD per 1g	259		mg/1g		
CBDV per 1g	2.01		mg/1g		THC-Total per Serving Size 1.84 mg/1g (Reported in milligrams per serving)
CBE per 1g	21.4		mg/1g		
CBG per 1g	2.30		mg/1g		
CBL per 1g	1.49		mg/1g		
CBN per 1g	2.24		mg/1g		
CBT per 1g	10.8		mg/1g		
Δ9-THC per 1g	1.84		mg/1g		

Residual Solvents:

All analytes passing and less than LOQ.

Pesticides:

All analytes passing and less than LOQ.

Terpenes:

Analyte	Percent by weight	Percent of Total	Analyte	Percent by weight	Percent of Total
(R)-(+)-Limonene	3.18	45.04%	a-pinene	2.76	39.09%
β-Caryophyllene	0.704	9.97%	(-)-caryophyllene oxide	0.138	1.95%
α-Bisabolol	0.112	1.59%	Humulene	0.0827	1.17%
β-Myrcene	0.0429	0.61%	Camphene	0.0395	0.56%
Total Terpenes	7.06	100.00%			

Metals:

Less than LOQ for all analytes.

Microbiology:

Less than LOQ for all analytes.



12423 NE Whitaker Way
 Portland, OR 97230
 503-254-1794



Report Number: 23-006471/D012.R000
Report Date: 06/22/2023
ORELAP#: OR100028
Purchase Order:
Received: 05/31/23 16:23

Microbiology

Analyte	Result	Limits	Units	LOQ	Batch	Analyzed Method	Status	Notes
Aerobic Plate Count	< LOQ		cfu/g	10	2308277	06/18/23 AOAC 990.12 (Petrifilm) ^P		I
E.coli	< LOQ		cfu/g	10	2308275	06/18/23 AOAC 991.14 (Petrifilm) ^P		I
Total Coliforms	< LOQ		cfu/g	10	2308275	06/18/23 AOAC 991.14 (Petrifilm) ^P		I
Mold (RAPID Petrifilm)	< LOQ		cfu/g	10	2308276	06/18/23 AOAC 2014.05 (RAPID) ^P		I
Yeast (RAPID Petrifilm)	< LOQ		cfu/g	10	2308276	06/18/23 AOAC 2014.05 (RAPID) ^P		I

Solvents		Method: Residual Solvents by GC/MS ^B				Units µg/g	Batch 2308405	Analyze 06/21/23 09:20 AM			
Analyte	Result	Limits	LOQ	Status	Notes	Analyte	Result	Limits	LOQ	Status	Notes
1,4-Dioxane	< LOQ	380	100	pass		2-Butanol	< LOQ	5000	200	pass	
2-Ethoxyethanol	< LOQ	160	30.0	pass		2-Methylbutane (Isopentane)	< LOQ		200		
2-Methylpentane	< LOQ		30.0			2-Propanol (IPA)	< LOQ	5000	200	pass	
2,2-Dimethylbutane	< LOQ		30.0			2,2-Dimethylpropane (neo-pentane)	< LOQ		200		
2,3-Dimethylbutane	< LOQ		30.0			3-Methylpentane	< LOQ		30.0		
Acetone	< LOQ	5000	200	pass		Acetonitrile	< LOQ	410	100	pass	
Benzene	< LOQ	2.00	1.00	pass		Butanes (sum)	< LOQ	5000	400	pass	
Cyclohexane	< LOQ	3880	200	pass		Ethanol	< LOQ		200		
Ethyl acetate	< LOQ	5000	200	pass		Ethyl benzene	< LOQ		200		
Ethyl ether	< LOQ	5000	200	pass		Ethylene glycol	< LOQ	620	200	pass	
Ethylene oxide	< LOQ	50.0	20.0	pass		Hexanes (sum)	< LOQ	290	150	pass	
Isopropyl acetate	< LOQ	5000	200	pass		Isopropylbenzene (Cumene)	< LOQ	70.0	30.0	pass	
m,p-Xylene	< LOQ		200			Methanol	< LOQ	3000	200	pass	
Methylene chloride	< LOQ	600	60.0	pass		Methylpropane (Isobutane)	< LOQ		200		
n-Butane	< LOQ		200			n-Heptane	< LOQ	5000	200	pass	
n-Hexane	< LOQ		30.0			n-Pentane	< LOQ		200		
o-Xylene	< LOQ		200			Pentanes (sum)	< LOQ	5000	600	pass	
Propane	< LOQ	5000	200	pass		Tetrahydrofuran	< LOQ	720	100	pass	
Toluene	< LOQ	890	100	pass		Total Xylenes	< LOQ		400		
Total Xylenes and Ethyl benzene	< LOQ	2170	600	pass							



12423 NE Whitaker Way
 Portland, OR 97230
 503-254-1794



Report Number: 23-011802/D002.R001
Report Date: 10/19/2023
ORELAP#: OR100028
Purchase Order: 2663180
Received: 10/04/23 16:16

Customer: Etz Hayim Holdings
 16427 NE Airport Way
 PORTLAND 97230
 United States of America (USA)

Product identity: FORM-SG100.V2-23081101-3

Client/Metric ID: .

Sample Date:

Laboratory ID: 23-011802-0003

Evidence of Cooling: No

Temp: 24 °C

Relinquished by: client

Serving Size #1: 1 g

Sample Results

Potency per 1g		Method: J AOAC 2015 V98-6 (mod) ^b	Units mg/se	Batch: 2311963	Analyze: 10/18/23 12:12:00 A
Analyte	Result	Limits	Units	LOQ	Notes
CBC per 1g	10.3		mg/1g	3.06	
CBC-A per 1g	< LOQ		mg/1g	0.0306	
CBC-Total per 1g	10.3		mg/1g	3.08	
CBD per 1g	259		mg/1g	3.06	
CBD-A per 1g	< LOQ		mg/1g	0.0306	
CBD-Total per 1g	259		mg/1g	3.08	
CBDV per 1g	2.01		mg/1g	0.0306	
CBDV-A per 1g	< LOQ		mg/1g	0.0306	
CBDV-Total per 1g	2.01		mg/1g	0.0571	
CBE per 1g	21.4		mg/1g	3.06	
CBG per 1g	2.30		mg/1g	0.0306	
CBG-A per 1g	< LOQ		mg/1g	0.0306	
CBG-Total per 1g	2.30		mg/1g	0.0571	
CBL per 1g	1.49		mg/1g	0.0306	
CBL-A per 1g	< LOQ		mg/1g	0.0306	
CBL-Total per 1g	1.49		mg/1g	0.0574	
CBN per 1g	2.24		mg/1g	0.0306	
CBT per 1g	10.8		mg/1g	3.06	
Δ8-THCV per 1g	< LOQ		mg/1g	0.0306	
Δ10-THC-9R per 1g	< LOQ		mg/1g	0.0306	
Δ10-THC-9S per 1g	< LOQ		mg/1g	0.0306	
Δ10-THC-Total per 1g	< LOQ		mg/1g	0.0611	
Δ8-THC per 1g	< LOQ		mg/1g	0.0306	
Δ9-THC per 1g	1.84		mg/1g	0.0306	
delta-9-THCP per 1g	< LOQ		mg/1g	0.0306	
exo-THC per 1g	< LOQ		mg/1g	0.0306	
THC-A per 1g	< LOQ		mg/1g	0.0306	
THC-Total per 1g	1.84		mg/1g	0.0574	
THCV per 1g	< LOQ		mg/1g	0.0306	
THCV-A per 1g	< LOQ		mg/1g	0.0306	



12423 NE Whitaker Way
Portland, OR 97230
503-254-1794

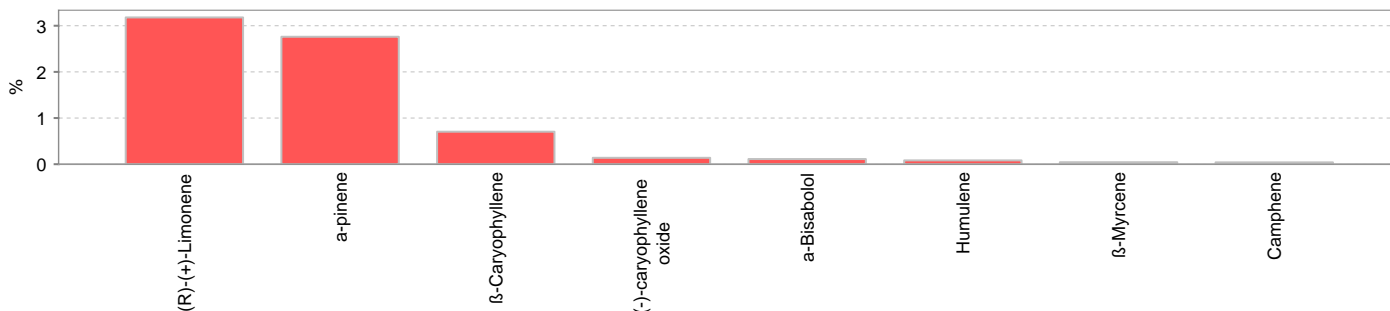


Report Number: 23-006471/D012.R000
Report Date: 06/22/2023
ORELAP#: OR100028
Purchase Order:
Received: 05/31/23 16:23

Pesticides											
Method: AOAC 2007.01 & EN 15662 (mod) ^b											
Units mg/kg Batch 2308371 Analyze 06/20/23 04:12 PM											
Analyte	Result	Limits	LOQ	Status	Notes	Analyte	Result	Limits	LOQ	Status	Notes
Abamectin [‡]	< LOQ	0.50	0.250	pass		Acephate [‡]	< LOQ	0.40	0.200	pass	
Acequinocyl [‡]	< LOQ	2.0	1.00	pass		Acetamiprid [‡]	< LOQ	0.20	0.100	pass	
Aldicarb [‡]	< LOQ	0.40	0.200	pass		Azoxystrobin [‡]	< LOQ	0.20	0.100	pass	
Bifentazate [‡]	< LOQ	0.20	0.100	pass		Bifenthrin [‡]	< LOQ	0.20	0.100	pass	
Boscalid [‡]	< LOQ	0.40	0.200	pass		Carbaryl [‡]	< LOQ	0.20	0.100	pass	
Carbofuran [‡]	< LOQ	0.20	0.100	pass		Chlorantraniliprole [‡]	< LOQ	0.20	0.100	pass	
Chlorfenapyr [‡]	< LOQ	1.0	0.500	pass		Chlorpyrifos [‡]	< LOQ	0.20	0.100	pass	
Clofentezine [‡]	< LOQ	0.20	0.100	pass		Cyfluthrin [‡]	< LOQ	1.0	0.500	pass	
Cypermethrin [‡]	< LOQ	1.0	0.500	pass		Daminozide [‡]	< LOQ	1.0	0.500	pass	
Diazinon [‡]	< LOQ	0.20	0.100	pass		Dichlorvos [‡]	< LOQ	1.0	0.500	pass	
Dimethoate [‡]	< LOQ	0.20	0.100	pass		Ethoprophos [‡]	< LOQ	0.20	0.100	pass	
Etofenprox [‡]	< LOQ	0.40	0.200	pass		Etoxazole [‡]	< LOQ	0.20	0.100	pass	
Fenoxycarb [‡]	< LOQ	0.20	0.100	pass		Fenpyroximate [‡]	< LOQ	0.40	0.200	pass	
Fipronil [‡]	< LOQ	0.40	0.200	pass		Fonicamid [‡]	< LOQ	1.0	0.400	pass	
Fludioxonil [‡]	< LOQ	0.40	0.200	pass		Hexythiazox [‡]	< LOQ	1.0	0.400	pass	
Imazalil [‡]	< LOQ	0.20	0.100	pass		Imidacloprid [‡]	< LOQ	0.40	0.200	pass	
Kresoxim-methyl [‡]	< LOQ	0.40	0.200	pass		Malathion [‡]	< LOQ	0.20	0.100	pass	
Metalaxyl [‡]	< LOQ	0.20	0.100	pass		Methiocarb [‡]	< LOQ	0.20	0.100	pass	
Methomyl [‡]	< LOQ	0.40	0.200	pass		MGK-264 [‡]	< LOQ	0.20	0.100	pass	
Myclobutanil [‡]	< LOQ	0.20	0.100	pass		Naled [‡]	< LOQ	0.50	0.250	pass	
Oxamyl [‡]	< LOQ	1.0	0.500	pass		Paclotubrazole [‡]	< LOQ	0.40	0.200	pass	
Parathion-Methyl [‡]	< LOQ	0.20	0.100	pass		Permethrin [‡]	< LOQ	0.20	0.100	pass	
Phosmet [‡]	< LOQ	0.20	0.100	pass		Piperonyl butoxide [‡]	< LOQ	2.0	1.00	pass	
Prallethrin [‡]	< LOQ	0.20	0.100	pass		Propiconazole [‡]	< LOQ	0.40	0.200	pass	
Propoxur [‡]	< LOQ	0.20	0.100	pass		Pyrethrin I (total) [‡]	< LOQ	1.0	0.500	pass	
Pyridaben [‡]	< LOQ	0.20	0.100	pass		Spinosad [‡]	< LOQ	0.20	0.100	pass	
Spiromesifen [‡]	< LOQ	0.20	0.100	pass		Spirotetramat [‡]	< LOQ	0.20	0.100	pass	
Spiroxamine [‡]	< LOQ	0.40	0.200	pass		Tebuconazole [‡]	< LOQ	0.40	0.200	pass	
Thiacloprid [‡]	< LOQ	0.20	0.100	pass		Thiamethoxam [‡]	< LOQ	0.20	0.100	pass	
Trifloxystrobin [‡]	< LOQ	0.20	0.100	pass							



Terpenes				Method: J AOAC 2015 V98-6	Units %	Batch 2308421	Analyze 06/20/23 01:59 PM		
Analyte	Result	LOQ	% of Total	Notes	Analyte	Result	LOQ	% of Total	Notes
(R)-(+)-Limonene	3.18	0.019	45.04%		a-pinene	2.76	0.019	39.09%	
β-Caryophyllene	0.704	0.019	9.972%		(-)-caryophyllene oxide	0.138	0.019	1.955%	
α-Bisabolol	0.112	0.019	1.586%		Humulene	0.0827	0.019	1.1714%	
β-Myrcene	0.0429	0.019	0.6076%		Camphene	0.0395	0.019	0.5595%	
(-)-β-Pinene	< LOQ	0.019	0.00%		Linalool	< LOQ	0.019	0.00%	
(±)-trans-Nerolidol	< LOQ	0.019	0.00%		Geranyl acetate	< LOQ	0.019	0.00%	
(+)-Cedrol	< LOQ	0.019	0.00%		(-)-Guaiol	< LOQ	0.019	0.00%	
(+)-fenchol	< LOQ	0.019	0.00%		Sabinene	< LOQ	0.019	0.00%	
Geraniol	< LOQ	0.019	0.00%		(±)-Camphor	< LOQ	0.019	0.00%	
(+)-Borneol	< LOQ	0.019	0.00%		(±)-fenchone	< LOQ	0.019	0.00%	
valencene	< LOQ	0.019	0.00%		Isoborneol	< LOQ	0.019	0.00%	
(±)-cis-Nerolidol	< LOQ	0.019	0.00%		(+)-Pulegone	< LOQ	0.019	0.00%	
nerol	< LOQ	0.019	0.00%		(-)-Isopulegol	< LOQ	0.019	0.00%	
Menthol	< LOQ	0.019	0.00%		(-)-a-Terpineol	< LOQ	0.019	0.00%	
a-Terpinene	< LOQ	0.019	0.00%		a-cedrene	< LOQ	0.019	0.00%	
a-phellandrene	< LOQ	0.019	0.00%		cis-β-Ocimene	< LOQ	0.006	0.00%	
d-3-Carene	< LOQ	0.019	0.00%		Eucalyptol	< LOQ	0.019	0.00%	
farnesene	< LOQ	0.019	0.00%		gamma-Terpinene	< LOQ	0.019	0.00%	
p-Cymene	< LOQ	0.019	0.00%		Sabinene hydrate	< LOQ	0.019	0.00%	
Terpinolene	< LOQ	0.019	0.00%		trans-β-Ocimene	< LOQ	0.012	0.00%	
Total Terpenes	7.06								



Metals									
Analyte	Result	Limits	Units	LOQ	Batch	Analyzed Method	Status	Notes	
Arsenic [‡]	< LOQ	0.200	mg/kg	0.0920	2308392	06/20/23 AOAC 2013.06 (mod.) [‡]	pass		
Cadmium [‡]	< LOQ	0.200	mg/kg	0.0920	2308392	06/20/23 AOAC 2013.06 (mod.) [‡]	pass		
Lead [‡]	< LOQ	0.500	mg/kg	0.0920	2308392	06/20/23 AOAC 2013.06 (mod.) [‡]	pass		
Mercury [‡]	< LOQ	0.100	mg/kg	0.0460	2308392	06/20/23 AOAC 2013.06 (mod.) [‡]	pass		



12423 NE Whitaker Way
Portland, OR 97230
503-254-1794



Report Number: 23-006471/D012.R000
Report Date: 06/22/2023
ORELAP#: OR100028
Purchase Order:
Received: 05/31/23 16:23

Abbreviations

Limits: Action Levels per OAR-333-007-0400, OAR-333-007-0210, OAR-333-007-0220, CCR title 16-division 42. BCC-section 5723

Limit(s) of Quantitation (LOQ): The minimum levels, concentrations, or quantities of a target variable (e.g., target analyte) that can be reported with a specified degree of confidence.

^p = ISO/IEC 17025:2017 accredited method.

[¥] = TNI accredited analyte.

Units of Measure

cfu/g = Colony forming units per gram

g = g

µg/g = Microgram per gram

mg/kg = Milligram per kilogram = parts per million (ppm)

mg/1g = Milligram per 1g

% = Percentage of sample

% wt = µg/g divided by 10,000

Glossary of Qualifiers

I: Insufficient sample received to meet method requirements.

Approved Signatory

Derrick Tanner
General Manager



12423 NE Whitaker Way
Portland, OR 97230
503-254-1794



Report Number: 23-006471/D012.R000
Report Date: 06/22/2023
ORELAP#: OR100028
Purchase Order:
Received: 05/31/23 16:23

Revision: 1 Document ID: 7148
Legacy ID: Worksheet Validated 04/20/2021

Laboratory Quality Control Results

JAOAC2015 V986 Batch ID: 2307856

Laboratory Control Sample									
Analyte	LCS	Result	Spike	Units	% Rec	Limits		Evaluation	Notes
CBVA	2	0.0283	0.0283	%	99.8	80.0	- 120	Acceptable	
CBV	2	0.0282	0.0291	%	96.8	80.0	- 120	Acceptable	
CBE	2	0.0313	0.0344	%	91.2	80.0	- 120	Acceptable	
CBDA	1	0.0289	0.0311	%	92.9	90.0	- 110	Acceptable	
CBSA	1	0.0305	0.0311	%	98.1	80.0	- 120	Acceptable	
CBS	1	0.0308	0.0322	%	95.7	80.0	- 120	Acceptable	
CB	1	0.0326	0.0323	%	101	90.0	- 110	Acceptable	
THCV	2	0.0193	0.0201	%	95.8	80.0	- 120	Acceptable	
δ8THCV	2	0.0254	0.0268	%	94.4	80.0	- 120	Acceptable	
THCVA	2	0.0295	0.0299	%	98.8	80.0	- 120	Acceptable	
CBN	1	0.0329	0.0329	%	99.9	80.0	- 120	Acceptable	
exo-THC	2	0.0286	0.0292	%	97.8	80.0	- 120	Acceptable	
δ9THC	1	0.0311	0.0341	%	91.0	90.0	- 110	Acceptable	
δ8THC	1	0.0399	0.0420	%	94.9	90.0	- 110	Acceptable	
9SaTHC	1	0.0246	0.0240	%	102	80.0	- 120	Acceptable	
CB	2	0.0318	0.0315	%	101	80.0	- 120	Acceptable	
9RaTHC	1	0.0313	0.0310	%	101	80.0	- 120	Acceptable	
CB	2	0.0315	0.0309	%	102	80.0	- 120	Acceptable	
THCA	1	0.0315	0.0314	%	100	90.0	- 110	Acceptable	
CBA	2	0.0336	0.0326	%	103	80.0	- 120	Acceptable	
CBA	2	0.0334	0.0331	%	101	80.0	- 120	Acceptable	
δ9THCP	2	0.0327	0.0321	%	102	80.0	- 120	Acceptable	
CB	2	0.0332	0.0327	%	102	80.0	- 120	Acceptable	

Method Blank							
Analyte	Result	LOQ	Units	Limits		Evaluation	Notes
CBVA	<LOQ	0.00323	%	< 0.00323		Acceptable	
CBV	<LOQ	0.00323	%	< 0.00323		Acceptable	
CBE	<LOQ	0.00323	%	< 0.00323		Acceptable	
CBDA	<LOQ	0.00323	%	< 0.00323		Acceptable	
CBSA	<LOQ	0.00323	%	< 0.00323		Acceptable	
CBS	<LOQ	0.00323	%	< 0.00323		Acceptable	
CB	<LOQ	0.00323	%	< 0.00323		Acceptable	
THCV	<LOQ	0.00323	%	< 0.00323		Acceptable	
δ8THCV	<LOQ	0.00323	%	< 0.00323		Acceptable	
THCVA	<LOQ	0.00323	%	< 0.00323		Acceptable	
CBN	<LOQ	0.00323	%	< 0.00323		Acceptable	
exo-THC	<LOQ	0.00323	%	< 0.00323		Acceptable	
δ9THC	<LOQ	0.00323	%	< 0.00323		Acceptable	
δ8THC	<LOQ	0.00323	%	< 0.00323		Acceptable	
9SaTHC	<LOQ	0.00323	%	< 0.00323		Acceptable	
CB	<LOQ	0.00323	%	< 0.00323		Acceptable	
9RaTHC	<LOQ	0.00323	%	< 0.00323		Acceptable	
CB	<LOQ	0.00323	%	< 0.00323		Acceptable	
THCA	<LOQ	0.00323	%	< 0.00323		Acceptable	
CBA	<LOQ	0.00323	%	< 0.00323		Acceptable	
CBA	<LOQ	0.00323	%	< 0.00323		Acceptable	
δ9THCP	<LOQ	0.00323	%	< 0.00323		Acceptable	
CB	<LOQ	0.00323	%	< 0.00323		Acceptable	

Abbreviations
 ND - None Detected at or above MRL
 RPD - Relative Percent Difference
 LOQ - Limit of Quantitation

Units of Measure:
 %- Percent



12423 NE Whitaker Way
 Portland, OR 97230
 503-254-1794

Report Number: 23-006471/D012.R000
Report Date: 06/22/2023
ORELAP#: OR100028
Purchase Order:
Received: 05/31/23 16:23



Revision: 1 Document ID: 7148
 Legacy ID: Worksheet Validated 04/20/2021

Laboratory Quality Control Results

JAOAC2015 V986		Batch ID: 2307856						
Sample Duplicate		Sample ID: 23-006038000101						
Analyte	Result	Org. Result	LOQ	Units	RPD	Limits	Evaluation	Notes
CBDA	<LOQ	<LOQ	0.00313	%	NA	< 20	Acceptable	
CBDV	0.0139	0.0142	0.00313	%	2.49	< 20	Acceptable	
CBF	<LOQ	<LOQ	0.00313	%	NA	< 20	Acceptable	
CBDA	<LOQ	<LOQ	0.00313	%	NA	< 20	Acceptable	
CBGA	<LOQ	<LOQ	0.00313	%	NA	< 20	Acceptable	
CBG	0.00782	0.00810	0.00313	%	3.59	< 20	Acceptable	
CB	2.71	2.84	0.00313	%	4.64	< 20	Acceptable	
THCV	<LOQ	<LOQ	0.00313	%	NA	< 20	Acceptable	
d8THCV	<LOQ	<LOQ	0.00313	%	NA	< 20	Acceptable	
THCVA	<LOQ	<LOQ	0.00313	%	NA	< 20	Acceptable	
CBN	<LOQ	<LOQ	0.00313	%	NA	< 20	Acceptable	
exo-THC	<LOQ	<LOQ	0.00313	%	NA	< 20	Acceptable	
d9THC	0.132	0.137	0.00313	%	3.98	< 20	Acceptable	
d8THC	0.0199	0.0206	0.00313	%	3.44	< 20	Acceptable	
9Sa10THC	<LOQ	<LOQ	0.00313	%	NA	< 20	Acceptable	
CB	<LOQ	<LOQ	0.00313	%	NA	< 20	Acceptable	
9Rd10THC	<LOQ	<LOQ	0.00313	%	NA	< 20	Acceptable	
CB	0.0103	0.0108	0.00313	%	4.45	< 20	Acceptable	
THCA	<LOQ	<LOQ	0.00313	%	NA	< 20	Acceptable	
CBGA	<LOQ	<LOQ	0.00313	%	NA	< 20	Acceptable	
CBLA	<LOQ	<LOQ	0.00313	%	NA	< 20	Acceptable	
d9THCP	<LOQ	<LOQ	0.00313	%	NA	< 20	Acceptable	
CB	0.0216	0.0224	0.00313	%	3.46	< 20	Acceptable	

Abbreviations

ND - None Detected at or above MRL
 RPD - Relative Percent Difference
 LOQ - Limit of Quantitation

Units of Measure:

% - Percent



12423 NE Whitaker Way
Portland, OR 97230
503-254-1794



Report Number: 23-006471/D012.R000
Report Date: 06/22/2023
ORELAP#: OR100028
Purchase Order:
Received: 05/31/23 16:23

Revision: 4 Document ID: 7148
Legacy ID: Worksheet Validated 04/20/2021

Laboratory Quality Control Results

JAOAC2015 V986 Batch ID: 2308195

Analyte	LCS	Result	Spike	Units	% Rec	Limits	Evaluation	Notes
CBDA	2	0.0290	0.0283	%	102	80.0 - 120	Acceptable	
CBV	2	0.0301	0.0291	%	103	80.0 - 120	Acceptable	
CEE	2	0.0350	0.0344	%	102	80.0 - 120	Acceptable	
CBDA	1	0.0318	0.0324	%	98.0	90.0 - 110	Acceptable	
CBGA	1	0.0316	0.0328	%	96.3	80.0 - 120	Acceptable	
CBG	1	0.0329	0.0340	%	96.7	80.0 - 120	Acceptable	
CB	1	0.0329	0.0343	%	95.9	90.0 - 110	Acceptable	
THCV	2	0.0210	0.0201	%	104	80.0 - 120	Acceptable	
δ8THCV	2	0.0267	0.0268	%	99.5	80.0 - 120	Acceptable	
THCVA	2	0.0309	0.0299	%	103	80.0 - 120	Acceptable	
CBN	1	0.0337	0.0347	%	96.9	80.0 - 120	Acceptable	
exo-THC	2	0.0293	0.0292	%	100	80.0 - 120	Acceptable	
δ9THC	1	0.0346	0.0351	%	98.5	90.0 - 110	Acceptable	
δ8THC	1	0.0434	0.0428	%	101	90.0 - 110	Acceptable	
9SaTHC	1	0.0245	0.0246	%	99.7	80.0 - 120	Acceptable	
CB	2	0.0324	0.0315	%	103	80.0 - 120	Acceptable	
9RaTHC	1	0.0314	0.0330	%	95.2	80.0 - 120	Acceptable	
CB	2	0.0315	0.0309	%	102	80.0 - 120	Acceptable	
THCA	1	0.0316	0.0332	%	95.3	90.0 - 110	Acceptable	
CBGA	2	0.0334	0.0326	%	102	80.0 - 120	Acceptable	
CBLA	2	0.0337	0.0331	%	102	80.0 - 120	Acceptable	
δ9THCP	2	0.0326	0.0321	%	102	80.0 - 120	Acceptable	
CB	2	0.0330	0.0327	%	101	80.0 - 120	Acceptable	

Method Blank

Analyte	Result	LOQ	Units	Limits	Evaluation	Notes
CBDA	<LOQ	0.00327	%	< 0.00327	Acceptable	
CBV	<LOQ	0.00327	%	< 0.00327	Acceptable	
CEE	<LOQ	0.00327	%	< 0.00327	Acceptable	
CBDA	<LOQ	0.00327	%	< 0.00327	Acceptable	
CBGA	<LOQ	0.00327	%	< 0.00327	Acceptable	
CBG	<LOQ	0.00327	%	< 0.00327	Acceptable	
CB	<LOQ	0.00327	%	< 0.00327	Acceptable	
THCV	<LOQ	0.00327	%	< 0.00327	Acceptable	
δ8THCV	<LOQ	0.00327	%	< 0.00327	Acceptable	
THCVA	<LOQ	0.00327	%	< 0.00327	Acceptable	
CBN	<LOQ	0.00327	%	< 0.00327	Acceptable	
exo-THC	<LOQ	0.00327	%	< 0.00327	Acceptable	
δ9THC	<LOQ	0.00327	%	< 0.00327	Acceptable	
δ8THC	<LOQ	0.00327	%	< 0.00327	Acceptable	
9SaTHC	<LOQ	0.00327	%	< 0.00327	Acceptable	
CB	<LOQ	0.00327	%	< 0.00327	Acceptable	
9RaTHC	<LOQ	0.00327	%	< 0.00327	Acceptable	
CB	<LOQ	0.00327	%	< 0.00327	Acceptable	
THCA	<LOQ	0.00327	%	< 0.00327	Acceptable	
CBGA	<LOQ	0.00327	%	< 0.00327	Acceptable	
CBLA	<LOQ	0.00327	%	< 0.00327	Acceptable	
δ9THCP	<LOQ	0.00327	%	< 0.00327	Acceptable	
CB	<LOQ	0.00327	%	< 0.00327	Acceptable	

Abbreviations

ND - None Detected at or above MRL
RPD - Relative Percent Difference
LOQ - Limit of Quantitation

Units of Measure:

% - Percent



12423 NE Whitaker Way
 Portland, OR 97230
 503-254-1794

Report Number: 23-006471/D012.R000
Report Date: 06/22/2023
ORELAP#: OR100028
Purchase Order:
Received: 05/31/23 16:23



Revision: 4 Document ID: 7148
 Legacy ID: Worksheet Validated 04/20/2021

Laboratory Quality Control Results

JAOAC2015 V986		Batch ID: 2308195						
Sample Duplicate		Sample ID: 23-006471000302						
Analyte	Result	Org. Result	LOQ	Units	RPD	Limits	Evaluation	Notes
CBDA	<LOQ	<LOQ	0.00311	%	NA	< 20	Acceptable	
CBDV	0.0896	0.0897	0.00311	%	0.112	< 20	Acceptable	
CBF	1.09	1.10	0.00311	%	0.467	< 20	Acceptable	
CBDA	<LOQ	<LOQ	0.00311	%	NA	< 20	Acceptable	
CBGA	<LOQ	<LOQ	0.00311	%	NA	< 20	Acceptable	
CBG	0.0772	0.0749	0.00311	%	3.03	< 20	Acceptable	
CB	11.7	11.8	0.00311	%	0.471	< 20	Acceptable	
THCV	<LOQ	<LOQ	0.00311	%	NA	< 20	Acceptable	
δ8THCV	<LOQ	<LOQ	0.00311	%	NA	< 20	Acceptable	
THCVA	<LOQ	<LOQ	0.00311	%	NA	< 20	Acceptable	
CBN	0.0935	0.0938	0.00311	%	0.254	< 20	Acceptable	
exo-THC	<LOQ	<LOQ	0.00311	%	NA	< 20	Acceptable	
δ9THC	0.126	0.128	0.00311	%	1.75	< 20	Acceptable	
δ8THC	<LOQ	<LOQ	0.00311	%	NA	< 20	Acceptable	
9Sa10THC	<LOQ	<LOQ	0.00311	%	NA	< 20	Acceptable	
CB	0.0601	0.0635	0.00311	%	5.45	< 20	Acceptable	
9Ra10THC	<LOQ	<LOQ	0.00311	%	NA	< 20	Acceptable	
CB	0.494	0.493	0.00311	%	0.219	< 20	Acceptable	
THCA	<LOQ	<LOQ	0.00311	%	NA	< 20	Acceptable	
CBGA	<LOQ	<LOQ	0.00311	%	NA	< 20	Acceptable	
CBLA	<LOQ	<LOQ	0.00311	%	NA	< 20	Acceptable	
δ9THCP	<LOQ	<LOQ	0.00311	%	NA	< 20	Acceptable	
CB	0.379	0.379	0.00311	%	0.0001	< 20	Acceptable	

Abbreviations

ND - None Detected at or above MRL
 RPD - Relative Percent Difference
 LOQ - Limit of Quantitation

Units of Measure:

% - Percent



12423 NE Whitaker Way
 Portland, OR 97230
 503-254-1794



Report Number: 23-006471/D012.R000
Report Date: 06/22/2023
ORELAP#: OR100028
Purchase Order:
Received: 05/31/23 16:23

Revision: 3 Document ID: 3120
 LegacyID: CFLC21WorksheetValidated 10/30/2020

Laboratory Pesticide Quality Control Results

AOAC2007.1 &EN 15662		Units: mg/Kg			Batch ID 2308371			
Method Blank	Blank Result	Blank Limits	Notes	LCS Result	LCS Spk	LCS% Re	Limits	Notes
Abamectin	0.00	< 0.250		0.942	1.000	94.2	50.0 150	
Acaphate	0.035	< 0.200		0.666	0.800	83.3	60.0 120	
Acetamiprid	0.002	< 0.100		0.371	0.400	92.7	60.0 120	
Aldicarb	0.00	< 0.200		0.751	0.800	93.8	60.0 120	
Azoxystrobin	0.001	< 0.100		0.367	0.400	91.7	60.0 120	
Bifenazate	0.00	< 0.100		0.367	0.400	91.7	60.0 120	
Bifenthrin	0.00	< 0.100		0.369	0.400	92.2	50.0 150	
Boscalid	0.00	< 0.200		0.769	0.800	96.1	60.0 120	
Carbaryl	0.00	< 0.100		0.361	0.400	90.2	60.0 120	
Carbendazim	0.00	< 0.100		0.369	0.400	92.3	60.0 120	
Chlorantraniliprole	0.00	< 0.100		0.374	0.400	93.4	60.0 120	
Chlorfenapyr	0.00	< 0.500		1.787	2.000	89.4	60.0 120	
Chlorpyrifos	0.003	< 0.100		0.357	0.400	89.4	60.0 120	
Clofentezine	0.00	< 0.100		0.370	0.400	92.6	60.0 120	
Cyfluthrin	0.00	< 0.500		1.794	2.000	89.7	50.0 150	
Cypermethrin	0.00	< 0.500		1.831	2.000	91.5	50.0 150	
Daminozide	0.018	< 0.500		0.640	2.000	32.0	60.0 120	Q6
Diazinon	0.00	< 0.100		0.388	0.400	95.6	60.0 120	
Dichlorvos	0.00	< 0.500		1.798	2.000	89.9	60.0 120	
Dimethoate	0.00	< 0.100		0.389	0.400	97.3	60.0 120	
Ethionphos	0.001	< 0.100		0.370	0.400	92.4	60.0 120	
Etofenprox	0.00	< 0.200		0.743	0.800	92.9	50.0 150	
Etoxazole	0.005	< 0.100		0.382	0.400	95.4	60.0 120	
Fenoxycarb	0.00	< 0.100		0.375	0.400	93.8	60.0 120	
Fenpyroximate	0.00	< 0.200		0.748	0.800	93.5	60.0 120	
Fipronil	0.00	< 0.200		0.747	0.800	93.4	60.0 120	
Fonicamid	0.00	< 0.250		0.982	1.000	98.2	60.0 120	
Fludioxonil	0.00	< 0.200		0.746	0.800	93.3	50.0 150	
Hexythiazox	0.00	< 0.250		0.912	1.000	91.2	60.0 120	
Imazalil	0.004	< 0.100		0.370	0.400	92.5	60.0 120	
Imidacloprid	0.00	< 0.200		0.701	0.800	87.6	60.0 120	
Kiesoxim-methyl	0.00	< 0.200		0.712	0.800	89.0	60.0 120	
Malathion	0.001	< 0.100		0.368	0.400	92.0	60.0 120	
Metaxyl	0.00	< 0.100		0.371	0.400	92.6	60.0 120	
Methiocarb	0.002	< 0.100		0.367	0.400	91.7	60.0 120	
Methomyl	0.00	< 0.200		0.769	0.800	96.6	60.0 120	
MCK-264	0.00	< 0.100		0.363	0.400	90.8	50.0 150	
Mydobutani	0.00	< 0.100		0.359	0.400	89.7	60.0 120	
Naled	0.00	< 0.250		0.919	1.000	91.9	50.0 150	
Oxaryl	0.00	< 0.500		1.866	2.000	93.3	60.0 120	
Padobutrazole	0.002	< 0.200		0.728	0.800	91.0	60.0 120	
Parathion-Methyl	0.00	< 0.100		0.330	0.400	82.5	50.0 150	
Permethrin	0.00	< 0.100		0.362	0.400	90.4	50.0 150	
Phosmet	0.00	< 0.100		0.369	0.400	92.4	50.0 150	
Piperonyl butoxide	0.00	< 0.500		1.874	2.000	93.7	60.0 120	
Prallethrin	0.00	< 0.100		0.372	0.400	93.1	60.0 120	
Propiconazole	0.00	< 0.200		0.740	0.800	92.4	60.0 120	
Propoxur	0.004	< 0.100		0.373	0.400	93.3	60.0 120	
Pyrethrin (Summe)	0.00	< 0.100		0.453	0.488	92.8	60.0 120	
Pyridaben	0.005	< 0.100		0.377	0.400	94.4	50.0 150	
Spinosad	0.00	< 0.100		0.347	0.388	89.6	50.0 150	
Spiromesfen	0.00	< 0.100		0.371	0.400	92.7	60.0 120	
Spirotetramat	0.00	< 0.100		0.373	0.400	93.3	60.0 120	
Spiroxamine	0.008	< 0.200		0.755	0.800	94.4	60.0 120	
Tebuconazole	0.00	< 0.200		0.728	0.800	91.1	60.0 120	
Thiadoprid	0.00	< 0.100		0.373	0.400	93.3	60.0 120	
Thiamethoxam	0.00	< 0.100		0.391	0.400	97.7	60.0 120	
Trifloxystrobin	0.002	< 0.100		0.369	0.400	92.2	60.0 120	



12423 NE Whitaker Way
Portland, OR 97230
503-254-1794



Report Number: 23-006471/D012.R000
Report Date: 06/22/2023
ORELAP#: OR100028
Purchase Order:
Received: 05/31/23 16:23

Revision: 3 Document ID: 3120
LegacyID: CFLC21WorksheetValidated 10/30/2020

Laboratory Pesticide Quality Control Results

AOAC2007.1 & EN 15662		Units: mg/Kg				Batch ID 2308371				
Matrix Spke/Matrix Spke Duplicate Recoveries	Result	MS Res	MSD Res	Spike	RFD%	Limit	MS% Re	MSD % Re	Limits	Notes
Abamectin	0.000	0.987	0.987	1.000	0.0%	< 30	98.7%	98.7%	50 - 150	
Acephate	0.031	0.707	0.708	0.800	0.3%	< 30	84.8%	84.7%	50 - 150	
Acequinocyl	0.096	3.769	3.766	4.000	0.1%	< 30	91.8%	91.7%	50 - 150	
Acetamiprid	0.002	0.385	0.380	0.400	1.4%	< 30	95.7%	94.3%	50 - 150	
Aldicarb	0.000	0.778	0.772	0.800	0.8%	< 30	97.3%	96.5%	50 - 150	
Azoxystrobin	0.001	0.377	0.378	0.400	0.4%	< 30	94.0%	94.4%	50 - 150	
Bifenazate	0.000	0.385	0.379	0.400	1.4%	< 30	96.2%	94.8%	50 - 150	
Bifenthrin	0.000	0.383	0.386	0.400	0.8%	< 30	95.7%	96.4%	50 - 150	
Boscalid	0.000	0.757	0.745	0.800	1.6%	< 30	94.8%	93.1%	50 - 150	
Carbaryl	0.000	0.383	0.380	0.400	0.8%	< 30	95.7%	94.9%	50 - 150	
Carbofuran	0.000	0.383	0.382	0.400	0.2%	< 30	95.8%	95.8%	50 - 150	
Chlorantraniliprole	0.000	0.402	0.382	0.400	4.9%	< 30	100.4%	95.8%	50 - 150	
Chlorfenapyr	0.000	1.824	1.871	2.000	2.6%	< 30	91.2%	93.8%	50 - 150	
Chlorpyrifos	0.003	0.378	0.374	0.400	1.3%	< 30	93.9%	92.7%	50 - 150	
Clofentezane	0.000	0.352	0.344	0.400	2.4%	< 30	88.1%	86.0%	50 - 150	
Cyfluthrin	0.000	1.886	1.808	2.000	4.2%	< 30	94.3%	90.4%	30 - 150	
Cypermethrin	0.000	1.963	1.941	2.000	1.1%	< 30	98.1%	97.1%	50 - 150	
Daminozide	0.005	0.648	0.660	2.000	1.8%	< 30	32.2%	32.8%	30 - 150	
Diazinon	0.000	0.405	0.399	0.400	1.5%	< 30	101.2%	99.7%	50 - 150	
Dichlorvos	0.022	1.978	1.977	2.000	0.1%	< 30	97.8%	97.8%	50 - 150	
Dimethoate	0.000	0.389	0.393	0.400	1.2%	< 30	97.2%	98.4%	50 - 150	
Ethionphos	0.001	0.383	0.377	0.400	1.4%	< 30	95.8%	94.1%	50 - 150	
Etofenprox	0.000	0.771	0.759	0.800	1.5%	< 30	96.4%	94.9%	50 - 150	
Etoxazole	0.004	0.411	0.410	0.400	0.1%	< 30	101.6%	101.4%	50 - 150	
Fenoxycarb	0.000	0.384	0.387	0.400	0.7%	< 30	96.0%	96.8%	50 - 150	
Fenpyroximate	0.000	0.804	0.794	0.800	1.3%	< 30	100.5%	99.3%	50 - 150	
Fipronil	0.000	0.778	0.778	0.800	0.0%	< 30	97.3%	97.3%	50 - 150	
Fonicamid	0.000	1.005	0.949	1.000	5.8%	< 30	100.5%	94.9%	50 - 150	
Fludioxonil	0.000	0.751	0.762	0.800	1.4%	< 30	93.9%	95.2%	50 - 150	
Hexythiazox	0.010	0.943	0.930	1.000	1.4%	< 30	93.3%	92.0%	50 - 150	
Imazalil	0.004	0.390	0.376	0.400	3.6%	< 30	96.8%	93.1%	50 - 150	
Imidacloprid	0.000	0.732	0.724	0.800	1.1%	< 30	91.5%	90.5%	50 - 150	
Kiesoxim-methyl	0.000	0.776	0.741	0.800	4.6%	< 30	97.1%	92.7%	50 - 150	
Malathion	0.001	0.384	0.378	0.400	1.4%	< 30	95.8%	94.4%	50 - 150	
Metolaxyl	0.000	0.389	0.388	0.400	0.2%	< 30	97.3%	97.1%	50 - 150	
Methiocarb	0.002	0.387	0.381	0.400	1.6%	< 30	96.3%	94.8%	50 - 150	
Methomyl	0.000	0.786	0.795	0.800	1.1%	< 30	98.3%	99.3%	50 - 150	
MCK-264	0.000	0.375	0.383	0.400	2.0%	< 30	93.9%	95.8%	50 - 150	
Mydobutani	0.000	0.392	0.388	0.400	1.2%	< 30	98.1%	96.9%	50 - 150	
Naled	0.000	0.970	0.950	1.000	2.1%	< 30	97.0%	95.0%	50 - 150	
Oxaryl	0.000	1.939	1.767	2.000	9.3%	< 30	97.0%	88.3%	50 - 150	
Padobutrazole	0.000	0.790	0.762	0.800	3.6%	< 30	98.8%	95.2%	50 - 150	
Parathion-Methyl	0.000	0.400	0.364	0.400	9.3%	< 30	100.0%	91.1%	30 - 150	
Permethrin	0.000	0.386	0.367	0.400	4.8%	< 30	96.4%	91.9%	50 - 150	
Phosmet	0.000	0.388	0.373	0.400	3.8%	< 30	96.9%	93.3%	50 - 150	
Piperonyl butoxide	0.000	1.929	1.918	2.000	0.6%	< 30	96.8%	95.9%	50 - 150	
Prallethrin	0.000	0.380	0.387	0.400	1.8%	< 30	95.0%	96.7%	50 - 150	
Propiconazole	0.000	0.776	0.765	0.800	1.5%	< 30	97.0%	95.8%	50 - 150	
Propoxur	0.004	0.388	0.385	0.400	0.8%	< 30	96.0%	95.3%	50 - 150	
Pyrethrin (Summe)	0.009	0.376	0.369	0.488	2.1%	< 30	75.2%	73.8%	50 - 150	
Pyridaben	0.005	0.372	0.373	0.400	0.1%	< 30	91.9%	92.0%	50 - 150	
Spirosad	0.000	0.359	0.362	0.388	0.8%	< 30	92.8%	93.4%	50 - 150	
Spiromesfen	0.000	0.390	0.384	0.400	1.6%	< 30	97.8%	96.0%	50 - 150	
Spirotetramat	0.000	0.382	0.378	0.400	1.1%	< 30	95.8%	94.8%	50 - 150	
Spiroxamine	0.000	0.791	0.781	0.800	1.3%	< 30	98.8%	97.8%	50 - 150	
Tebuconazole	0.000	0.779	0.769	0.800	1.2%	< 30	97.4%	96.2%	50 - 150	
Thiadoprid	0.000	0.392	0.383	0.400	2.1%	< 30	97.9%	95.8%	50 - 150	
Thiamethoxam	0.000	0.392	0.373	0.400	4.9%	< 30	98.0%	93.3%	50 - 150	
Trifloxystrobin	0.002	0.387	0.387	0.400	0.2%	< 30	96.4%	96.2%	50 - 150	



12423 NE Whitaker Way
Portland, OR 97230
503-254-1794

Report Number: 23-006471/D012.R000
Report Date: 06/22/2023
ORELAP#: OR100028
Purchase Order:
Received: 05/31/23 16:23



Revision: 2 Document ID: 7087
Legacy ID: CFL-E33Effective:

Laboratory Quality Control Results

Residual Solvents				Batch ID: 2308405					
Method Blank				Laboratory Control Sample					
Analyte	Result	LOQ	Notes	Result	Spike	Units	% Rec	Limits	Notes
Propane	ND	< 200		538	584	µg/g	92.1	60 - 120	
Isobutane	ND	< 200		656	767	µg/g	85.5	60 - 120	
Butane	ND	< 200		677	782	µg/g	86.6	60 - 120	
2,2-Dimethylpropane	ND	< 200		807	939	µg/g	85.9	60 - 120	
Methanol	ND	< 200		1390	1640	µg/g	84.8	60 - 120	
Ethylene Oxide	ND	< 30		51.8	57.1	µg/g	90.7	60 - 120	
2-Methylbutane	ND	< 200		1360	1600	µg/g	85.0	60 - 120	
Pentane	ND	< 200		1400	1620	µg/g	86.4	60 - 120	
Ethanol	ND	< 200		1410	1610	µg/g	87.6	70 - 130	
Ethyl Ether	ND	< 200		1440	1610	µg/g	89.4	60 - 120	
2,2-Dimethylbutane	ND	< 30		144	168	µg/g	85.7	60 - 120	
Acetone	ND	< 200		1410	1620	µg/g	87.0	60 - 120	
2-Propanol	ND	< 200		1420	1600	µg/g	88.8	60 - 120	
Ethyl Formate	ND	< 500		1200	1600	µg/g	75.0	70 - 130	
Acetonitrile	ND	< 100		414	484	µg/g	85.5	60 - 120	
Methyl Acetate	ND	< 500		1440	1610	µg/g	89.4	70 - 130	
2,3-Dimethylbutane	ND	< 30		150	162	µg/g	92.6	60 - 120	
Dichloromethane	ND	< 60		449	483	µg/g	93.0	60 - 120	
2-Methylpentane	ND	< 30		136	174	µg/g	78.2	60 - 120	
MTBE	ND	< 500		1490	1610	µg/g	92.5	70 - 130	
3-Methylpentane	ND	< 30		151	168	µg/g	89.9	60 - 120	
Hexane	ND	< 30		146	168	µg/g	86.9	60 - 120	
1-Propanol	ND	< 500		1410	1600	µg/g	88.1	70 - 130	
Methylethylketone	ND	< 500		1480	1620	µg/g	91.4	70 - 130	
Ethyl acetate	ND	< 200		1430	1600	µg/g	89.4	60 - 120	
2-Butanol	ND	< 200		1400	1600	µg/g	87.5	60 - 120	
Tetrahydrofuran	ND	< 100		453	514	µg/g	88.1	60 - 120	
Cyclohexane	ND	< 200		1460	1600	µg/g	91.3	60 - 120	
2-methyl-1-propanol	ND	< 500		1460	1610	µg/g	90.7	70 - 130	
Benzene	ND	< 1		3.85	5.12	µg/g	75.2	60 - 120	
Isopropyl Acetate	ND	< 200		1440	1620	µg/g	88.9	60 - 120	
Heptane	ND	< 200		1450	1610	µg/g	90.1	60 - 120	
1-Butanol	ND	< 500		1390	1600	µg/g	86.9	70 - 130	
Propyl Acetate	ND	< 500		1200	1600	µg/g	75.0	70 - 130	
1,4-Dioxane	ND	< 100		400	493	µg/g	81.1	60 - 120	
2-Ethoxyethanol	ND	< 30		137	163	µg/g	84.0	60 - 120	
Methylisobutylketone	ND	< 500		1450	1600	µg/g	90.6	70 - 130	
3-Methyl-1-butanol	ND	< 500		1490	1610	µg/g	92.5	70 - 130	
Ethylene Glycol	ND	< 200		527	483	µg/g	109.1	60 - 120	
Toluene	ND	< 100		431	493	µg/g	87.4	60 - 120	
Isobutyl Acetate	ND	< 500		1400	1600	µg/g	87.5	70 - 130	
1-Pentanol	ND	< 500		1380	1600	µg/g	86.3	70 - 130	
Butyl Acetate	ND	< 500		1360	1600	µg/g	85.0	70 - 130	
Ethylbenzene	ND	< 200		803	969	µg/g	82.9	60 - 120	
m,p-Xylene	ND	< 200		748	968	µg/g	77.3	60 - 120	
o-Xylene	ND	< 200		815	976	µg/g	83.5	60 - 120	
Cumene	ND	< 30		129	162	µg/g	79.6	60 - 120	
Anisole	ND	< 500		1340	1610	µg/g	83.2	70 - 130	
DMSO	ND	< 500		1270	1610	µg/g	78.9	70 - 130	
1,2-dimethoxyethane	ND	< 50		144	164	µg/g	87.8	70 - 130	
Triethylamine	ND	< 500		1480	1600	µg/g	92.5	70 - 130	
N,N-dimethylformamide	ND	< 150		430	484	µg/g	88.8	70 - 130	
N,N-dimethylacetamide	ND	< 150		459	489	µg/g	93.9	70 - 130	
Pyridine	ND	< 50		143	172	µg/g	83.1	70 - 130	
Sulfolane	ND	< 50		75.2	163	µg/g	46.1	70 - 130	Q6
1,2-Dichloroethane	ND	< 1		0.883	1	µg/g	88.3	70 - 130	
Chloroform	ND	< 1		0.916	1	µg/g	91.6	70 - 130	
Trichloroethylene	ND	< 1		0.893	1	µg/g	89.3	70 - 130	
1,1-Dichloroethane	ND	< 1		0.933	1	µg/g	93.3	70 - 130	



12423 NE Whitaker Way
 Portland, OR 97230
 503-254-1794



Report Number: 23-006471/D012.R000
Report Date: 06/22/2023
ORELAP#: OR100028
Purchase Order:
Received: 05/31/23 16:23

Revision: 2 Document ID: 7087
 Legacy ID: CFL-E33Effective:

QC- Sample Duplicate Sample ID: 23-006471-0004

Analyte	Result	Org. Result	LOQ Units	RPD	Limits	Accept/ Fail	Notes
Propane	ND	ND	200 µg/g	0.0	< 20	Acceptable	
Isobutane	ND	ND	200 µg/g	0.0	< 20	Acceptable	
Butane	ND	ND	200 µg/g	0.0	< 20	Acceptable	
2,2-Dimethylpropane	ND	ND	200 µg/g	0.0	< 20	Acceptable	
Methanol	ND	ND	200 µg/g	0.0	< 20	Acceptable	
Ethylene Oxide	ND	ND	30 µg/g	0.0	< 20	Acceptable	
2-Methylbutane	ND	ND	200 µg/g	0.0	< 20	Acceptable	
Pentane	ND	ND	200 µg/g	0.0	< 20	Acceptable	
Ethanol	ND	ND	200 µg/g	0.0	< 20	Acceptable	
Ethyl Ether	ND	ND	200 µg/g	0.0	< 20	Acceptable	
2,2-Dimethylbutane	ND	ND	30 µg/g	0.0	< 20	Acceptable	
Acetone	ND	ND	200 µg/g	0.0	< 20	Acceptable	
2-Propanol	ND	ND	200 µg/g	0.0	< 20	Acceptable	
Ethyl Formate	ND	ND	500 µg/g	0.0	< 20	Acceptable	
Acetonitrile	ND	ND	100 µg/g	0.0	< 20	Acceptable	
Methyl Acetate	ND	ND	500 µg/g	0.0	< 20	Acceptable	
2,3-Dimethylbutane	ND	ND	30 µg/g	0.0	< 20	Acceptable	
Dichloromethane	ND	ND	60 µg/g	0.0	< 20	Acceptable	
2-Methylpentane	ND	ND	30 µg/g	0.0	< 20	Acceptable	
MTBE	ND	ND	500 µg/g	0.0	< 20	Acceptable	
3-Methylpentane	ND	ND	30 µg/g	0.0	< 20	Acceptable	
Hexane	ND	ND	30 µg/g	0.0	< 20	Acceptable	
1-Propanol	ND	ND	500 µg/g	0.0	< 20	Acceptable	
Methyl ethyl ketone	ND	ND	500 µg/g	0.0	< 20	Acceptable	
Ethyl acetate	ND	ND	200 µg/g	0.0	< 20	Acceptable	
2-Butanol	ND	ND	200 µg/g	0.0	< 20	Acceptable	
Tetrahydrofuran	ND	ND	100 µg/g	0.0	< 20	Acceptable	
Cyclohexane	ND	ND	200 µg/g	0.0	< 20	Acceptable	
2-methyl-1-propanol	ND	ND	500 µg/g	0.0	< 20	Acceptable	
Benzene	ND	ND	1 µg/g	0.0	< 20	Acceptable	
Isopropyl Acetate	ND	ND	200 µg/g	0.0	< 20	Acceptable	
Heptane	ND	ND	200 µg/g	0.0	< 20	Acceptable	
1-Butanol	ND	ND	500 µg/g	0.0	< 20	Acceptable	
Propyl Acetate	ND	ND	500 µg/g	0.0	< 20	Acceptable	
1,4-Dioxane	ND	ND	100 µg/g	0.0	< 20	Acceptable	
2-Ethoxyethanol	ND	ND	30 µg/g	0.0	< 20	Acceptable	
Methylisobutylketone	ND	ND	500 µg/g	0.0	< 20	Acceptable	
3-Methyl-1-butanol	ND	ND	500 µg/g	0.0	< 20	Acceptable	
Ethylene Glycol	ND	ND	200 µg/g	0.0	< 20	Acceptable	
Toluene	ND	ND	100 µg/g	0.0	< 20	Acceptable	
Isobutyl Acetate	ND	ND	500 µg/g	0.0	< 20	Acceptable	
1-Pentanol	ND	ND	500 µg/g	0.0	< 20	Acceptable	
Butyl Acetate	ND	ND	500 µg/g	0.0	< 20	Acceptable	
Ethylbenzene	ND	ND	200 µg/g	0.0	< 20	Acceptable	
m,p-Xylene	ND	ND	200 µg/g	0.0	< 20	Acceptable	
o-Xylene	ND	ND	200 µg/g	0.0	< 20	Acceptable	
Cumene	ND	ND	30 µg/g	0.0	< 20	Acceptable	
Anisole	ND	ND	500 µg/g	0.0	< 20	Acceptable	
DMSO	ND	ND	500 µg/g	0.0	< 20	Acceptable	
1,2-dimethoxyethane	ND	ND	50 µg/g	0.0	< 20	Acceptable	
Triethylamine	ND	ND	500 µg/g	0.0	< 20	Acceptable	
N,N-dimethylformamide	ND	ND	150 µg/g	0.0	< 20	Acceptable	
N,N-dimethylacetamide	ND	ND	150 µg/g	0.0	< 20	Acceptable	
Pyridine	ND	ND	50 µg/g	0.0	< 20	Acceptable	
Sulfolane	ND	ND	50 µg/g	0.0	< 20	Acceptable	
1,2-Dichloroethane	ND	ND	1 µg/g	0.0	< 20	Acceptable	
Chloroform	ND	ND	1 µg/g	0.0	< 20	Acceptable	
Trichloroethylene	ND	ND	1 µg/g	0.0	< 20	Acceptable	
1,1-Dichloroethane	ND	ND	1 µg/g	0.0	< 20	Acceptable	

Abbreviations

ND - None Detected at or above MRL
 RPD - Relative Percent Difference
 LOQ - Limit of Quantitation
 Q6 - Quality control outside QC limits. Data acceptable based on remaining QC.

Units of Measure:

µg/g- Microgram per gram or ppm



12423 NE Whitaker Way
 Portland, OR 97230
 503-254-1794



Report Number: 23-006471/D012.R000
Report Date: 06/22/2023
ORELAP#: OR100028
Purchase Order:
Received: 05/31/23 16:23

Revision: 1 Document ID: 7086
 Legacy ID: CFL-E57Worksheet Validated 11/04/2020

Terpenes Quality Control Results

Method Reference: EPA5035				Batch ID: 2308421					
Method Blank				Laboratory Control Sample					
Analyte	Result	LOQ	Notes	Result	LCS	Units	LCS% Rec	Limits	Notes
a-pinene	<LOQ	< 200		407	500	µg/g	81%	70 - 130	
Camphene	<LOQ	< 200		416	500	µg/g	83%	70 - 130	
Sabinene	<LOQ	< 200		404	500	µg/g	81%	70 - 130	
b-Pinene	<LOQ	< 200		403	500	µg/g	81%	70 - 130	
b-Myrcene	<LOQ	< 200		398	500	µg/g	80%	70 - 130	
a-phellandrene	<LOQ	< 200		419	500	µg/g	84%	70 - 130	
d-3-Carene	<LOQ	< 200		407	500	µg/g	81%	70 - 130	
a-Terpinene	<LOQ	< 200		412	500	µg/g	82%	70 - 130	
p-Cymene	<LOQ	< 200		401	500	µg/g	80%	70 - 130	
D-Limonene	<LOQ	< 200		409	500	µg/g	82%	70 - 130	
Eucalyptol	<LOQ	< 200		409	500	µg/g	82%	70 - 130	
b-cis-Cimene	<LOQ	< 67		132	167	µg/g	79%	70 - 130	
b-trans-Cimene	<LOQ	< 133		270	333	µg/g	81%	70 - 130	
g-Terpinene	<LOQ	< 200		409	500	µg/g	82%	70 - 130	
Sabinene Hydrate	<LOQ	< 200		415	500	µg/g	83%	70 - 130	
Terpinolene	<LOQ	< 200		402	500	µg/g	80%	70 - 130	
D-Fenchone	<LOQ	< 200		409	500	µg/g	82%	70 - 130	
Linalool	<LOQ	< 200		412	500	µg/g	82%	70 - 130	
Fenchol	<LOQ	< 200		409	500	µg/g	82%	70 - 130	
Camphor	<LOQ	< 200		406	500	µg/g	81%	70 - 130	
Isopulego	<LOQ	< 200		416	500	µg/g	83%	70 - 130	
Isoborneol	<LOQ	< 200		420	500	µg/g	84%	70 - 130	
Borneol	<LOQ	< 200		423	500	µg/g	85%	70 - 130	
DL-Menthol	<LOQ	< 200		393	500	µg/g	79%	70 - 130	
Terpineol	<LOQ	< 200		402	500	µg/g	80%	70 - 130	
Nerd	<LOQ	< 200		350	500	µg/g	70%	70 - 130	
Pulegone	<LOQ	< 200		384	500	µg/g	77%	70 - 130	
Geraniol	<LOQ	< 200		384	500	µg/g	77%	70 - 130	
Geranyl Acetate	<LOQ	< 200		365	500	µg/g	73%	70 - 130	
a-Cedrene	<LOQ	< 200		402	500	µg/g	80%	70 - 130	
b-Caryophyllene	<LOQ	< 200		415	500	µg/g	83%	70 - 130	
a-Humulene	<LOQ	< 200		419	500	µg/g	84%	70 - 130	
Valene	<LOQ	< 200		399	500	µg/g	80%	70 - 130	
cis-Nerolidol	<LOQ	< 200		405	500	µg/g	81%	70 - 130	
a-Farnesene	<LOQ	< 200		419	500	µg/g	84%	70 - 130	
trans-Nerolidol	<LOQ	< 200		426	500	µg/g	85%	70 - 130	
Caryophyllene Oxide	<LOQ	< 200		423	500	µg/g	85%	70 - 130	
Guaiol	<LOQ	< 200		419	500	µg/g	84%	70 - 130	
Cedrol	<LOQ	< 200		415	500	µg/g	83%	70 - 130	
a-Bisabolol	<LOQ	< 200		406	500	µg/g	81%	70 - 130	

Definitions

LOQ	Limit of Quantitation
LCS	Laboratory Control Sample
% RE	Percent Recovery



12423 NE Whitaker Way
 Portland, OR 97230
 503-254-1794



Report Number: 23-006471/D012.R000
Report Date: 06/22/2023
ORELAP#: OR100028
Purchase Order:
Received: 05/31/23 16:23

Revision: 1 Document ID: 7086
 Legacy ID: CFL-E57Worksheet Validated 11/04/2020

Terpenes Quality Control Results

Method Reference: EPA5035		Batch ID: 2308421					
Sample/ Sample Duplicate		Sample ID: 23-006471-0004					
Analyte	Result	Org. Result	LOQ	Units	% RPD	LIMIT	Notes
a-pinene	27800	27600	193	µg/g	1%	< 20	
Camphene	397	395	193	µg/g	1%	< 20	
Sabinene	<LOQ	<LOQ	193	µg/g	0%	< 20	
b-Pinene	<LOQ	<LOQ	193	µg/g	0%	< 20	
b-Myrcene	431	429	193	µg/g	0%	< 20	
a-phellandrene	<LOQ	<LOQ	193	µg/g	0%	< 20	
d-3-Carene	<LOQ	<LOQ	193	µg/g	0%	< 20	
a-Terpinene	<LOQ	<LOQ	193	µg/g	0%	< 20	
p-Cymene	<LOQ	<LOQ	193	µg/g	0%	< 20	
D-Limonene	32000	31800	193	µg/g	1%	< 20	
Eucalyptol	<LOQ	<LOQ	193	µg/g	0%	< 20	
b-cis-Cimene	<LOQ	<LOQ	642	µg/g	0%	< 20	
b-trans-Cimene	<LOQ	<LOQ	128	µg/g	0%	< 20	
g-Terpinene	<LOQ	<LOQ	193	µg/g	0%	< 20	
Sabinene Hydrate	<LOQ	<LOQ	193	µg/g	0%	< 20	
Terpinolene	<LOQ	<LOQ	193	µg/g	0%	< 20	
D-Fenchone	<LOQ	<LOQ	193	µg/g	0%	< 20	
Linalool	<LOQ	<LOQ	193	µg/g	0%	< 20	
Fenchol	<LOQ	<LOQ	193	µg/g	0%	< 20	
Camphor	<LOQ	<LOQ	193	µg/g	0%	< 20	
Isopulego	<LOQ	<LOQ	193	µg/g	0%	< 20	
Isoborneol	<LOQ	<LOQ	193	µg/g	0%	< 20	
Borneol	<LOQ	<LOQ	193	µg/g	0%	< 20	
DL-Menthhol	<LOQ	<LOQ	193	µg/g	0%	< 20	
Terpineol	<LOQ	<LOQ	193	µg/g	0%	< 20	
Nerd	<LOQ	<LOQ	193	µg/g	0%	< 20	
Pulegone	<LOQ	<LOQ	193	µg/g	0%	< 20	
Geraniol	<LOQ	<LOQ	193	µg/g	0%	< 20	
Geranyl_Acetate	<LOQ	<LOQ	193	µg/g	0%	< 20	
a-Cedrene	<LOQ	<LOQ	193	µg/g	0%	< 20	
b-Caryophyllene	7090	7040	193	µg/g	1%	< 20	
a-Humulene	829	827	193	µg/g	0%	< 20	
Valnene	<LOQ	<LOQ	193	µg/g	0%	< 20	
cis-Nerolidol	<LOQ	<LOQ	193	µg/g	0%	< 20	
a-Farnesene	<LOQ	<LOQ	193	µg/g	0%	< 20	
trans-Nerolidol	<LOQ	<LOQ	193	µg/g	0%	< 20	
Caryophyllene_Oxide	1390	1380	193	µg/g	1%	< 20	
Guaiol	<LOQ	<LOQ	193	µg/g	0%	< 20	
Cedrol	<LOQ	<LOQ	193	µg/g	0%	< 20	
a-Bisabolol	1170	1120	193	µg/g	4%	< 20	

Definitions

RPD Relative Percent Difference



12423 NE Whitaker Way
Portland, OR 97230
503-254-1794



Report Number: 23-006471/D012.R000
Report Date: 06/22/2023
ORELAP#: OR100028
Purchase Order:
Received: 05/31/23 16:23





Explanation of QC Flag Comments:

Code	Explanation
Q	Matrix interferences affecting spike or surrogate recoveries.
Q1	Quality control result biased high. Only non-detect samples reported.
Q2	Quality control outside QC limits. Data considered estimate.
Q3	Sample concentration greater than four times the amount spiked.
Q4	Non-homogenous sample matrix, affecting RPD result and/or % recoveries.
Q5	Spike results above calibration curve.
Q6	Quality control outside QC limits. Data acceptable based on remaining QC.
R	Relative percent difference (RPD) outside control limit.
R1	RPD non-calculable, as sample or duplicate results are less than five times the LOQ.
R2	Sample replicates RPD non-calculable, as only one replicate is within the analytical range.
LOQ1	Quantitation level raised due to low sample volume and/or dilution.
LOQ2	Quantitation level raised due to matrix interference.
B	Analyte detected in method blank, but not in associated samples.
B1	The sample concentration is greater than 5 times the blank concentration.
B2	The sample concentration is less than 5 times the blank concentration.



12423 NE Whitaker Way
Portland, OR 97230
503-254-1794



Report Number: 23-011802/D002.R001
Report Date: 10/19/2023
ORELAP#: OR100028
Purchase Order: 2663180
Received: 10/04/23 16:16

Potency per 1g					
Method: J AOAC 2015 V98-6 (mod) ^b					
Units mg/se Batch: 2311963 Analyze: 10/18/23 12:12:00 A					
Analyte	Result	Limits	Units	LOQ	Notes
THCV-Total per 1g	< LOQ		mg/1g	0.0574	
Total Cannabinoids per 1g	311		mg/1g		



12423 NE Whitaker Way
Portland, OR 97230
503-254-1794



Report Number: 23-011802/D002.R001
Report Date: 10/19/2023
ORELAP#: OR100028
Purchase Order: 2663180
Received: 10/04/23 16:16

Abbreviations

Limits: Action Levels per OAR-333-007-0400, OAR-333-007-0210, OAR-333-007-0220, CCR title 16-division 42. BCC-section 5723

Limit(s) of Quantitation (LOQ): The minimum levels, concentrations, or quantities of a target variable (e.g., target analyte) that can be reported with a specified degree of confidence.

^p = ISO/IEC 17025:2017 accredited method.

Units of Measure

g = g

mg/1g = Milligram per 1g

% = Percentage of sample

% wt = $\mu\text{g/g}$ divided by 10,000

Approved Signatory

Derrick Tanner
General Manager



12423 NE Whitaker Way
 Portland, OR 97230
 503-254-1794



Report Number: 23-011802/D002.R001
Report Date: 10/19/2023
ORELAP#: OR100028
Purchase Order: 2663180
Received: 10/04/23 16:16

Revision: 4 Document ID: 7148
 Legacy ID: Worksheet Validated 04/20/2021

Laboratory Quality Control Results

J AOAC 2015 V98-6 Batch ID: 2311963

Laboratory Control Sample									
Analyte	LCS	Result	Spike	Units	% Rec	Limits		Evaluation	Notes
CBDVA	2	0.0307	0.0333	%	92.2	80.0	- 120	Acceptable	
CBDV	2	0.0309	0.0324	%	95.4	80.0	- 120	Acceptable	
CBE	2	0.0329	0.0355	%	92.7	80.0	- 120	Acceptable	
CBDA	1	0.0310	0.0322	%	96.0	90.0	- 110	Acceptable	
CBGA	1	0.0314	0.0329	%	95.4	80.0	- 120	Acceptable	
CBG	1	0.0355	0.0368	%	96.7	80.0	- 120	Acceptable	
CBD	1	0.0308	0.0313	%	98.2	90.0	- 110	Acceptable	
THCV	2	0.0280	0.0304	%	91.9	80.0	- 120	Acceptable	
d8THCV	2	0.0291	0.0305	%	95.4	80.0	- 120	Acceptable	
THCVA	2	0.0305	0.0327	%	93.3	80.0	- 120	Acceptable	
CBN	1	0.0316	0.0329	%	96.2	80.0	- 120	Acceptable	
exo-THC	2	0.0298	0.0327	%	91.2	80.0	- 120	Acceptable	
d9THC	1	0.0345	0.0365	%	94.6	90.0	- 110	Acceptable	
d8THC	1	0.0331	0.0340	%	97.4	90.0	- 110	Acceptable	
9S-d10THC	1	0.0326	0.0337	%	96.6	80.0	- 120	Acceptable	
CBL	2	0.0319	0.0337	%	94.6	80.0	- 120	Acceptable	
9R-d10THC	1	0.0318	0.0336	%	94.6	80.0	- 120	Acceptable	
CBC	2	0.0311	0.0338	%	91.8	80.0	- 120	Acceptable	
THCA	1	0.0308	0.0337	%	91.5	90.0	- 110	Acceptable	
CBCA	2	0.0295	0.0333	%	88.6	80.0	- 120	Acceptable	
CBLA	2	0.0315	0.0349	%	90.4	80.0	- 120	Acceptable	
d9THCP	2	0.0293	0.0333	%	88.0	80.0	- 120	Acceptable	
CBT	2	0.0288	0.0322	%	89.4	80.0	- 120	Acceptable	

Method Blank						
Analyte	Result	LOQ	Units	Limits	Evaluation	Notes
CBDVA	<LOQ	0.00331	%	< 0.00331	Acceptable	
CBDV	<LOQ	0.00331	%	< 0.00331	Acceptable	
CBE	<LOQ	0.00331	%	< 0.00331	Acceptable	
CBDA	<LOQ	0.00331	%	< 0.00331	Acceptable	
CBGA	<LOQ	0.00331	%	< 0.00331	Acceptable	
CBG	<LOQ	0.00331	%	< 0.00331	Acceptable	
CBD	<LOQ	0.00331	%	< 0.00331	Acceptable	
THCV	<LOQ	0.00331	%	< 0.00331	Acceptable	
d8THCV	<LOQ	0.00331	%	< 0.00331	Acceptable	
THCVA	<LOQ	0.00331	%	< 0.00331	Acceptable	
CBN	<LOQ	0.00331	%	< 0.00331	Acceptable	
exo-THC	<LOQ	0.00331	%	< 0.00331	Acceptable	
d9THC	<LOQ	0.00331	%	< 0.00331	Acceptable	
d8THC	<LOQ	0.00331	%	< 0.00331	Acceptable	
9S-d10THC	<LOQ	0.00331	%	< 0.00331	Acceptable	
CBL	<LOQ	0.00331	%	< 0.00331	Acceptable	
9R-d10THC	<LOQ	0.00331	%	< 0.00331	Acceptable	
CBC	<LOQ	0.00331	%	< 0.00331	Acceptable	
THCA	<LOQ	0.00331	%	< 0.00331	Acceptable	
CBCA	<LOQ	0.00331	%	< 0.00331	Acceptable	
CBLA	<LOQ	0.00331	%	< 0.00331	Acceptable	
d9THCP	<LOQ	0.00331	%	< 0.00331	Acceptable	
CBT	<LOQ	0.00331	%	< 0.00331	Acceptable	

Abbreviations
 ND - None Detected at or above MRL
 RPD - Relative Percent Difference
 LOQ - Limit of Quantitation

Units of Measure:
 % - Percent



12423 NE Whitaker Way
 Portland, OR 97230
 503-254-1794



Report Number: 23-011802/D002.R001
Report Date: 10/19/2023
ORELAP#: OR100028
Purchase Order: 2663180
Received: 10/04/23 16:16

Revision: 4 Document ID: 7148
 Legacy ID: Worksheet Validated 04/20/2021

Laboratory Quality Control Results

J AOAC 2015 V98-6		Batch ID: 2311963						
Sample Duplicate		Sample ID: 23-012215-0001						
Analyte	Result	Org. Result	LOQ	Units	RPD	Limits	Evaluation	Notes
CBDVA	<LOQ	<LOQ	0.00330	%	NA	< 20	Acceptable	
CBDV	0.0360	0.0367	0.00330	%	1.83	< 20	Acceptable	
CBE	0.0584	0.0581	0.00330	%	0.501	< 20	Acceptable	
CBD	<LOQ	<LOQ	0.00330	%	NA	< 20	Acceptable	
CBDA	<LOQ	<LOQ	0.00330	%	NA	< 20	Acceptable	
CBGA	<LOQ	<LOQ	0.00330	%	NA	< 20	Acceptable	
CBG	0.0429	0.0422	0.00330	%	1.74	< 20	Acceptable	
CBD	3.78	3.84	0.00330	%	1.54	< 20	Acceptable	
THCV	<LOQ	<LOQ	0.00330	%	NA	< 20	Acceptable	
d8THCV	<LOQ	<LOQ	0.00330	%	NA	< 20	Acceptable	
THCVA	<LOQ	<LOQ	0.00330	%	NA	< 20	Acceptable	
CBN	0.0241	0.0242	0.00330	%	0.349	< 20	Acceptable	
exo-THC	<LOQ	<LOQ	0.00330	%	NA	< 20	Acceptable	
d9THC	0.135	0.135	0.00330	%	0.235	< 20	Acceptable	
d8THC	0.0311	0.0309	0.00330	%	0.505	< 20	Acceptable	
9S-d10THC	<LOQ	<LOQ	0.00330	%	NA	< 20	Acceptable	
CBL	<LOQ	<LOQ	0.00330	%	NA	< 20	Acceptable	
9R-d10THC	<LOQ	<LOQ	0.00330	%	NA	< 20	Acceptable	
CBC	0.245	0.245	0.00330	%	0.0285	< 20	Acceptable	
THCA	<LOQ	<LOQ	0.00330	%	NA	< 20	Acceptable	
CBCA	<LOQ	<LOQ	0.00330	%	NA	< 20	Acceptable	
CBLA	<LOQ	<LOQ	0.00330	%	NA	< 20	Acceptable	
d9THCP	<LOQ	<LOQ	0.00330	%	NA	< 20	Acceptable	
CBT	0.0673	0.0474	0.00330	%	34.6	< 20	Outlier	R, Q6

Abbreviations

ND - None Detected at or above MRL
 RPD - Relative Percent Difference
 LOQ - Limit of Quantitation

Units of Measure:

% - Percent



12423 NE Whitaker Way
Portland, OR 97230
503-254-1794



Report Number: 23-011802/D002.R001
Report Date: 10/19/2023
ORELAP#: OR100028
Purchase Order: 2663180
Received: 10/04/23 16:16





Explanation of QC Flag Comments:

Code	Explanation
Q	Matrix interferences affecting spike or surrogate recoveries.
Q1	Quality control result biased high. Only non-detect samples reported.
Q2	Quality control outside QC limits. Data considered estimate.
Q3	Sample concentration greater than four times the amount spiked.
Q4	Non-homogenous sample matrix, affecting RPD result and/or % recoveries.
Q5	Spike results above calibration curve.
Q6	Quality control outside QC limits. Data acceptable based on remaining QC.
R	Relative percent difference (RPD) outside control limit.
R1	RPD non-calculable, as sample or duplicate results are less than five times the LOQ.
R2	Sample replicates RPD non-calculable, as only one replicate is within the analytical range.
LOQ1	Quantitation level raised due to low sample volume and/or dilution.
LOQ2	Quantitation level raised due to matrix interference.
B	Analyte detected in method blank, but not in associated samples.
B1	The sample concentration is greater than 5 times the blank concentration.
B2	The sample concentration is less than 5 times the blank concentration.