

CERTIFICATE OF ANALYSIS

ISO/IEC 17025:2017 ACCREDITATION #103104



Order #: 83658
 Order Name: Medterra 3000mg
 Full Spectrum Citrus Tincture
 LE210104
 Batch#: LE210104
 Received: 09/02/2021
 Completed: 09/07/2021

Medterra CBD, LLC
 9801 Research Drive
 Irvine CA, 92618
 (800) 971-1288
 support@medterracbd.com



Sample



0.220% D9-THC	10.187% Total CBD
3,530.1 mg Cannabinoids per unit	2,887.9 mg CBD per unit

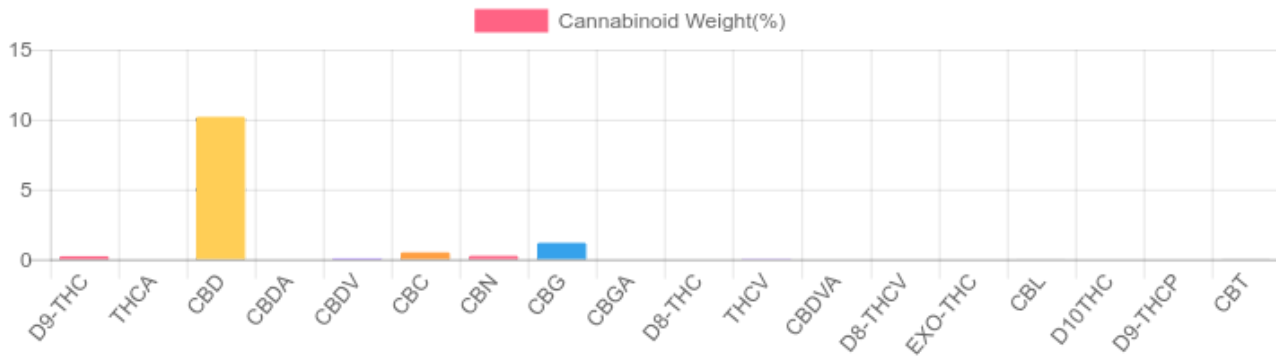
1 unit = 30 ml per unit x density (0.945) x Cannabinoid concentration

Cannabinoids Test

HPLC-DAD
 GSL SOP 400

UPLOADED: 09/03/2021 13:29:38

Cannabinoids	LOQ	weight(%)	mg/g	mg/unit
D9-THC	10 PPM	0.220%	2.204	62.483
THCA	10 PPM	N/D	N/D	N/D
CBD	10 PPM	10.187%	101.865	2,887.873
CBDA	20 PPM	N/D	N/D	N/D
CBDV	20 PPM	0.052%	0.517	14.657
CBC	10 PPM	0.496%	4.957	140.531
CBN	10 PPM	0.252%	2.516	71.329
CBG	10 PPM	1.174%	11.736	332.716
CBGA	20 PPM	N/D	N/D	N/D
D8-THC	10 PPM	N/D	N/D	N/D
THCV	10 PPM	0.003%	0.033	0.936
CBDVA	20 PPM	N/D	N/D	N/D
D8-THCV	20 PPM	N/D	N/D	N/D
EXO-THC	20 PPM	N/D	N/D	N/D
CBL	20 PPM	0.014%	0.136	3.856
D10THC	20 PPM	N/D	N/D	N/D
D9-THCP	20 PPM	N/D	N/D	N/D
CBT	20 PPM	0.055%	0.554	15.706
TOTAL D9-THC		0.220%	0.220%	62.5
TOTAL CBD*		10.187%	101.865	2,887.9
TOTAL CANNABINOIDS		12.453%	124.518	3,530.1



Reporting Limit 10 ppm
 *Total CBD = CBD + CBDA x 0.877
 N/D - Not Detected, B/LOQ - Below Limit of Quantification

Ben Witten, MS, MT., Lab Director

Green Scientific Labs
 info@greenscientificlabs.com
 1-833 TEST CBD



Green Scientific Labs uses its best efforts to deliver high quality results and to verify that the data contained therein are based on sound scientific judgment and levels listed are guidelines only and all data was reported based on standard laboratory procedures and deviations. However Green Scientific Labs makes no warranties or claims to that effect and further shall not be liable for any damage or misrepresentation that may result from the use or misuse of the data contained herein in any way. Further, Green Scientific Labs makes no claims regarding representations of the analyzed sample to the larger batch from which it was taken. Data and information in this report are intended solely for the individual(s) for whom samples were submitted and as part of our strict confidentiality policy, Green Scientific Labs can only discuss results with the original client of record.

CERTIFICATE OF ANALYSIS

ISO/IEC 17025:2017 ACCREDITATION #103104



Order #: 83658
 Order Name: Medterra 3000mg
 Full Spectrum Citrus Tincture
 LE210104
 Batch#: LE210104
 Received: 09/02/2021
 Completed: 09/07/2021

Medterra CBD, LLC
 9801 Research Drive
 Irvine CA, 92618
 (800) 971-1288
 support@medterracbd.com



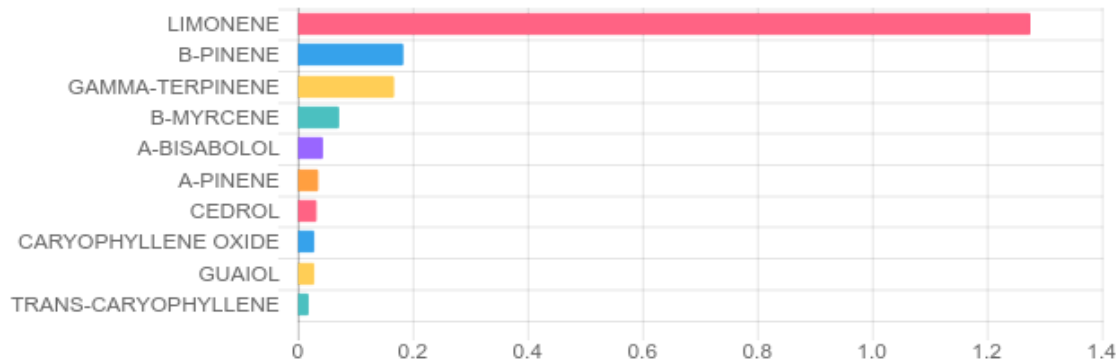
TERPENES: TOTAL (1.933%)

GSL SOP 404
 Uploaded: 09/03/2021 16:23:13

GC-FID

Terpene	Results (%)	LOQ (%)	LOD (%)	Terpene	Results (%)	LOQ (%)	LOD (%)
3-CARENE	B/LOQ	0.003%	0.001%	GERANIOL	B/LOQ	0.003%	0.001%
A-BISABOLOL	0.044%	0.003%	0.001%	GERANYL ACETATE	B/LOQ	0.003%	0.001%
A-CEDRENE	B/LOQ	0.003%	0.001%	GUAIOL	0.029%	0.003%	0.001%
A-HUMULENE	0.005%	0.003%	0.001%	HEXAHYDROTHYMOL	0.003%	0.003%	0.001%
A-PINENE	0.036%	0.003%	0.001%	ISOBORNEOL	B/LOQ	0.003%	0.001%
A-TERPINENE	B/LOQ	0.003%	0.001%	ISOPULEGOL	B/LOQ	0.003%	0.001%
B-MYRCENE	0.072%	0.003%	0.001%	LIMONENE	1.276%	0.003%	0.001%
B-PINENE	0.184%	0.003%	0.001%	LINALOOL	B/LOQ	0.003%	0.001%
BORNEOL (MIX OF ISOMERS)	B/LOQ	0.003%	0.001%	NEROL	B/LOQ	0.003%	0.001%
CAMPHENE	B/LOQ	0.003%	0.001%	P-MENTHA-1, 5-DIENE	B/LOQ	0.003%	0.001%
CAMPHOR (MIX OF ISOMERS)	B/LOQ	0.003%	0.001%	PULEGONE (+)	B/LOQ	0.003%	0.001%
CARYOPHYLLENE OXIDE	0.029%	0.003%	0.001%	SABINENE HYDRATE	B/LOQ	0.003%	0.001%
CEDROL	0.033%	0.003%	0.001%	TERPINEOL (MIX OF ISOMERS)	0.016%	0.003%	0.001%
CIS-NEROLIDOL	B/LOQ	0.003%	0.001%	TERPINOLENE	B/LOQ	0.003%	0.001%
CIS-OCIMENE	B/LOQ	0.003%	0.001%	TRANS-CARYOPHYLLENE	0.019%	0.003%	0.001%
ENDO-FENCHYL ALCOHOL	B/LOQ	0.003%	0.001%	TRANS-NEROLIDOL	B/LOQ	0.003%	0.001%
EUCALYPTOL	B/LOQ	0.003%	0.001%	TRANS-OCIMENE	0.010%	0.003%	0.001%
FENCHONE (MIX OF ISOMERS)	B/LOQ	0.003%	0.001%	VALENCENE	B/LOQ	0.003%	0.001%
GAMMA-TERPINENE	0.168%	0.003%	0.001%				

Top Terpenes Results:



Ben Witten, MS, MT., Lab Director

Green Scientific Labs
 info@greenscientificlabs.com
 1-833 TEST CBD



Green Scientific Labs uses its best efforts to deliver high quality results and to verify that the data contained therein are based on sound scientific judgment and levels listed are guidelines only and all data was reported based on standard laboratory procedures and deviations. However Green Scientific Labs makes no warranties or claims to that effect and further shall not be liable for any damage or misrepresentation that may result from the use or misuse of the data contained herein in any way. Further, Green Scientific Labs makes no claims regarding representations of the analyzed sample to the larger batch from which it was taken. Data and information in this report are intended solely for the individual(s) for whom samples were submitted and as part of our strict confidentiality policy, Green Scientific Labs can only discuss results with the original client of record.

CERTIFICATE OF ANALYSIS

ISO/IEC 17025:2017 ACCREDITATION #103104



Order #: 83658
 Order Name: Medterra 3000mg
 Full Spectrum Citrus Tincture
 LE210104
 Batch#: LE210104
 Received: 09/02/2021
 Completed: 09/07/2021

Medterra CBD, LLC
 9801 Research Drive
 Irvine CA, 92618
 (800) 971-1288
 support@medterracbd.com



PESTICIDE ANALYSIS:

GSL SOP 401

PREPARED: 09/02/2021 19:29:26

UPLOADED: 09/07/2021 11:24:03

GC-MS/MS

Pesticide	Action Level (ppm)	Results (ppm)	LOQ (ppm)	LOD (ppm)
CAPTAN	0.700	N/D	0.100	0.100
CHLORDANE	0.100	N/D	0.010	0.010
CHLORFENAPYR	0.100	N/D	0.010	0.010
COUMAPHOS	0.100	N/D	0.010	0.010

Pesticide	Action Level (ppm)	Results (ppm)	LOQ (ppm)	LOD (ppm)
CYFLUTHRIN	2.000	N/D	0.010	0.010
CYPERMETHRIN	1.000	N/D	0.010	0.010
PARATHION-METHYL	0.100	N/D	0.010	0.010
PENTACHLORONITROBENZENE	0.100	N/D	0.010	0.010

LC-MS/MS

Pesticide	Action Level (ppm)	Results (ppm)	LOQ (ppm)	LOD (ppm)
ABAMECTIN B1A	0.100	N/D	0.005	0.005
ACEPHATE	0.100	N/D	0.005	0.001
ACEQUINOCYL	0.100	N/D	0.005	0.005
ACETAMIPRID	0.100	N/D	0.005	0.005
ALDICARB	0.100	N/D	0.005	0.005
AZOXYSTROBIN	0.100	N/D	0.005	0.001
BIFENAZATE	0.100	N/D	0.005	0.001
BIFENTHRIN	3.000	N/D	0.005	0.005
BOSCALID	0.100	N/D	0.005	0.005
CARBARYL	0.500	N/D	0.005	0.001
CARBOFURAN	0.100	N/D	0.005	0.001
CHLORANTRANILIPROLE	10.000	N/D	0.005	0.005
CHLORPYRIFOS	0.100	N/D	0.005	0.005
CLOFENTEZINE	0.100	N/D	0.005	0.005
DAMINOZIDE	0.100	N/D	0.005	0.001
DIAZINON	0.100	N/D	0.005	0.005
DICHLORVOS	0.100	N/D	0.005	0.001
DIMETHOATE	0.100	N/D	0.005	0.001
DIMETHOMORPH	2.000	N/D	0.005	0.001
ETHOPROPHOS	0.100	N/D	0.005	0.001
ETOFENPROX	0.100	N/D	0.005	0.005
ETOXAZOLE	0.100	N/D	0.050	0.005
FENHEXAMID	0.100	N/D	0.005	0.001
FENOXYCARB	0.100	N/D	0.005	0.005
FENPYROXIMATE	0.100	N/D	0.005	0.005
FIPRONIL	0.100	N/D	0.005	0.005
FLONICAMID	0.100	N/D	0.025	0.005
FLUDIOXONIL	0.100	N/D	0.005	0.005
HEXYTHIAZOX	0.100	N/D	0.005	0.005
IMAZALIL	0.100	N/D	0.005	0.001

Pesticide	Action Level (ppm)	Results (ppm)	LOQ (ppm)	LOD (ppm)
IMIDACLOPRID	5.000	N/D	0.005	0.001
KRESOXIM-METHYL	0.100	N/D	0.005	0.005
MALATHION	0.500	N/D	0.005	0.001
METALAXYL	2.000	N/D	0.005	0.001
METHIOCARB	0.100	N/D	0.005	0.001
METHOMYL	1.000	N/D	0.005	0.001
MEVINPHOS	0.100	N/D	0.005	0.001
MYCLOBUTANIL	0.100	N/D	0.005	0.005
NALED	0.100	N/D	0.005	0.001
OXAMYL	0.500	N/D	0.005	0.001
PACLOBUTRAZOL	0.100	N/D	0.005	0.005
PERMETHRINS	0.500	N/D	0.005	0.005
PHOSMET	0.100	N/D	0.005	0.001
PIPERONYL	3.000	N/D	0.005	0.005
BUTOXIDE	0.100	N/D	0.005	0.005
PRALLETHRIN	0.100	N/D	0.010	0.005
PROPICONAZOLE	0.100	N/D	0.005	0.001
PROPOXUR	0.100	N/D	0.005	0.001
PYRETHRINS	0.500	N/D	0.005	0.001
PYRIDABEN	0.100	N/D	0.005	0.005
SPINETORAM	0.100	N/D	0.005	0.005
SPINOSAD	0.100	N/D	0.005	0.005
SPIROMESIFEN	0.100	N/D	0.005	0.001
SPIROTETRAMAT	0.100	N/D	0.005	0.005
SPIROXAMINE	0.100	N/D	0.005	0.001
TEBUCONAZOLE	0.100	N/D	0.005	0.001
THIACLOPRID	0.100	N/D	0.005	0.001
THIAMETHOXAM	5.000	N/D	0.005	0.001
TRIFLOXYSTROBIN	0.100	N/D	0.005	0.005

N/D = Not Detected, A/LOQ = Above LOQ Level, B/LOQ = Below LOQ Level, B/LOD = Below LOD Level

Ben Witten, MS, MT., Lab Director

Green Scientific Labs
 info@greenscientificlabs.com
 1-833 TEST CBD



Green Scientific Labs uses its best efforts to deliver high quality results and to verify that the data contained therein are based on sound scientific judgment and levels listed are guidelines only and all data was reported based on standard laboratory procedures and deviations. However Green Scientific Labs makes no warranties or claims to that effect and further shall not be liable for any damage or misrepresentation that may result from the use or misuse of the data contained herein in any way. Further, Green Scientific Labs makes no claims regarding representations of the analyzed sample to the larger batch from which it was taken. Data and information in this report are intended solely for the individual(s) for whom samples were submitted and as part of our strict confidentiality policy, Green Scientific Labs can only discuss results with the original client of record.

CERTIFICATE OF ANALYSIS

ISO/IEC 17025:2017 ACCREDITATION #103104



Order #: 83658
Order Name: Medterra 3000mg
 Full Spectrum Citrus Tincture
 LE210104
Batch#: LE210104
Received: 09/02/2021
Completed: 09/07/2021

Medterra CBD, LLC
 9801 Research Drive
 Irvine CA, 92618
 (800) 971-1288
 support@medterracbd.com



RESIDUAL SOLVENTS:

HS-GC-MS

GSL SOP 405

Uploaded: 09/03/2021 11:44:46

Residual Solvent	Action Level (ppm)	Results (ppm)	LOQ (ppm)	LOD (ppm)
1,1-DICHLOROETHENE	8	N/D	0.63	0.6
1,2- DICHLOROETHANE	2	N/D	0.12	0.012
1,2-DICHLOROETHENE	5	N/D	0.73	0.09
ACETONE	5,000	N/D	140	9
ACETONITRILE	410	N/D	25	0.72
BENZENE	1	N/D	1	0.6
BUTANE	5,000	N/D	50	48
CHLOROFORM	1	N/D	1	0.5
ETHANOL	5,000	N/D	140	12
ETHYL ACETATE	5,000	N/D	140	2.4
ETHYL ETHER	5,000	N/D	140	6
ETHYLENE OXIDE	1	N/D	2	0.6
ISOPROPYL ALCOHOL	5,000	N/D	140	3
METHANOL	3,000	N/D	100	6
METHYLENE CHLORIDE	125	N/D	1.5	1.5
N-HEPTANE	5,000	N/D	140	6
N-HEXANE	290	N/D	18	0.06
PENTANE	5,000	N/D	140	9
PROPANE	5,000	N/D	30	30
TOLUENE	890	N/D	53	0.9
TRICHLOROETHENE	1	N/D	1	0.3
XYLENES	150	N/D	130	1.8

Ben Witten, MS, MT., Lab Director

Green Scientific Labs
 info@greenscientificlabs.com
 1-833 TEST CBD



Green Scientific Labs uses its best efforts to deliver high quality results and to verify that the data contained therein are based on sound scientific judgment and levels listed are guidelines only and all data was reported based on standard laboratory procedures and deviations. However Green Scientific Labs makes no warranties or claims to that effect and further shall not be liable for any damage or misrepresentation that may result from the use or misuse of the data contained herein in any way. Further, Green Scientific Labs makes no claims regarding representations of the analyzed sample to the larger batch from which it was taken. Data and information in this report are intended solely for the individual(s) for whom samples were submitted and as part of our strict confidentiality policy, Green Scientific Labs can only discuss results with the original client of record.

CERTIFICATE OF ANALYSIS

ISO/IEC 17025:2017 ACCREDITATION #103104



Order #: 83658
 Order Name: Medterra 3000mg
 Full Spectrum Citrus Tincture
 LE210104
 Batch#: LE210104
 Received: 09/02/2021
 Completed: 09/07/2021

Medterra CBD, LLC
 9801 Research Drive
 Irvine CA, 92618
 (800) 971-1288
 support@medterracbd.com



Microbial Analysis:

Microbial Analysis GSL SOP 406

PCR - Agilent AriaMX

Uploaded: 09/05/2021 15:33:18

MICROBIAL ANALYSIS:

PCR - Agilent AriaMX

Test	SOP	Test Method	Device Used	LOD	Allowable Criteria	Actual Result	Pass/Fail
SALMONELLA*	406.01	USP 61/62†	ARIAMX PCR	1 CFU/G**	DETECT/NOT DETECTED	NOT DETECTED	PASS
STEC E. COLI*	406.01	USP 61/62†	ARIAMX PCR	1 CFU/G**	DETECT/NOT DETECTED	NOT DETECTED	PASS
ASPERGILLUS FUMIGATUS***	406.01	USP 61/62†	ARIAMX PCR	1 CFU/G**	DETECT/NOT DETECTED	NOT DETECTED	PASS
ASPERGILLUS TERREUS***	406.01	USP 61/62†	ARIAMX PCR	1 CFU/G**	DETECT/NOT DETECTED	NOT DETECTED	PASS
ASPERGILLUS FLAVUS***	406.01	USP 61/62†	ARIAMX PCR	1 CFU/G**	DETECT/NOT DETECTED	NOT DETECTED	PASS
ASPERGILLUS NIGER***	406.01	USP 61/62†	ARIAMX PCR	1 CFU/G**	DETECT/NOT DETECTED	NOT DETECTED	PASS

† USP 61 (enumeration of bacteria TAC, TYM, and ENT/Coliform), USP 62 (identifying specific species E.coli Aspergillus etc)

* STEC and Salmonella run as Multiplex

** CFU/g Calculation based on MIP/Extract matrix

*** Flavus = 2 Copies of DNA / Fumigatis = 2 Copies of DNA Niger = 20 Copies of DNA / Terrus = 10 copies of DNA

Ben Witten, MS, MT., Lab Director

Green Scientific Labs
 info@greenscientificlabs.com
 1-833 TEST CBD



Green Scientific Labs uses its best efforts to deliver high quality results and to verify that the data contained therein are based on sound scientific judgment and levels listed are guidelines only and all data was reported based on standard laboratory procedures and deviations. However Green Scientific Labs makes no warranties or claims to that effect and further shall not be liable for any damage or misrepresentation that may result from the use or misuse of the data contained herein in any way. Further, Green Scientific Labs makes no claims regarding representations of the analyzed sample to the larger batch from which it was taken. Data and information in this report are intended solely for the individual(s) for whom samples were submitted and as part of our strict confidentiality policy, Green Scientific Labs can only discuss results with the original client of record.

CERTIFICATE OF ANALYSIS

ISO/IEC 17025:2017 ACCREDITATION #103104



Order #: 83658
Order Name: Medterra 3000mg
Full Spectrum Citrus Tincture
LE210104
Batch#: LE210104
Received: 09/02/2021
Completed: 09/07/2021

Medterra CBD, LLC
9801 Research Drive
Irvine CA, 92618
(800) 971-1288
support@medterracbd.com



Mycotoxin Analysis:

LC-MS/MS
GSL SOP 401

Uploaded: 09/03/2021 12:45:21

Analyte	Action Lvl (ppb)	Results (ppb)
AFLATOXIN B1	20	N/D
AFLATOXIN B2	20	N/D
AFLATOXIN G1	20	N/D
AFLATOXIN G2	20	N/D
OCHRATOXIN A	20	N/D

LOQ is 1ppb, LOD is 1ppb

Heavy Metals Analysis:

ICP-MS
GSL SOP 403

Uploaded: 09/03/2021 19:42:13

Metal	Action Level (ppb)	Result (ppb)
ARSENIC (AS)	2,000	B/LOQ
CADMIUM (CD)	2,000	B/LOQ
MERCURY (HG)	1,000	B/LOQ
LEAD (PB)	5,000	B/LOQ

Lower Limit of Quantitation (LOQ) is 75 ppb, Limit of Detection (LOD) is 3 ppb

Ben Witten, MS, MT., Lab Director

Green Scientific Labs
info@greenscientificlabs.com
1-833 TEST CBD



Green Scientific Labs uses its best efforts to deliver high quality results and to verify that the data contained therein are based on sound scientific judgment and levels listed are guidelines only and all data was reported based on standard laboratory procedures and deviations. However Green Scientific Labs makes no warranties or claims to that effect and further shall not be liable for any damage or misrepresentation that may result from the use or misuse of the data contained herein in any way. Further, Green Scientific Labs makes no claims regarding representations of the analyzed sample to the larger batch from which it was taken. Data and information in this report are intended solely for the individual(s) for whom samples were submitted and as part of our strict confidentiality policy, Green Scientific Labs can only discuss results with the original client of record.