



CERTIFICATE OF ANALYSIS

PRODUCT NAME: Certified Organic Joy Organics CBD Tincture - Natural
PRODUCT STRENGTH: 450 mg
FILL LOT NUMBER: B1103-001
TINCTURE BATCH: 21019A
BEST BY DATE: 07/19/2022
HEMP EXTRACT LOT NA

Click on the links to view third-party reports

Physical Attributes

Test	Method	Specification	Results
Color	SOP-100	Golden to Amber	PASS
Odor	SOP-100	Characteristic - Olive and hemp	PASS
Appearance	SOP-100	Golden to Amber oil in brown glass bottle with dropper	PASS
Primary Package Eval.	SOP-132	Container clean and free of filth. Container caps tight and shrink bands intact	PASS
Secondary Package Eval.	SOP-132	Labeling Compliance Checked, Cartons sturdy and clean. Sufficient cushion material exists. Box taped and secure.	PASS

Review of Third-Party Analysis

Panel	Method	Specification	Results*	Pass/Fail
Potency - Total CBD	SOP-111	450-562.5 mg CBD LOQ**: 10 PPM† (0.001%)	492 mg	PASS
Potency - D9-THC	SOP-111	None Detected LOQ: 10 PPM (0.001%)	ND	PASS
Compliant Pesticide Panel	SOP-111	WIP-100008 : Product specification for Tinctures, Oregon Action limits apply	ND	PASS
Microbial - Stec E.Coli	SOP-111	Complies with USP 61/62	Below LOQ	PASS
Microbial - Salmonella	SOP-111	Complies with USP 61/62	Below LOQ	PASS
Microbial - Yeast and Mold	SOP-111	Complies with USP 61/62	Below LOQ	PASS
CA Compliant Heavy Metal Panel	SOP-111	Arsenic (As): ≤1.5 PPM Cadmium (Cd): ≤0.5 PPM Mercury (Hg): ≤1.0 PPM Lead (Pb): ≤0.5 PPM	ND	PASS

**Level of Quantitation, † Parts Per Million

Quality Certified Kei Horikawa 02/02/2021
 Kei Horikawa Date
 Quality Control Manager

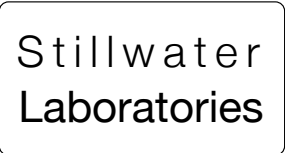
OTNAT 450

Certificate of Analysis



total cannabinoids	Δ^9 -THC	THCa	total THC
17 mg	0.00 mg	0.00 mg	0.00 mg
per mL	CBD	CBDa	total CBD
	16.4 mg	0.00 mg	16.4 mg

This Product Has Been Tested and Complies with 7USC1639o(1) Definition of Hemp



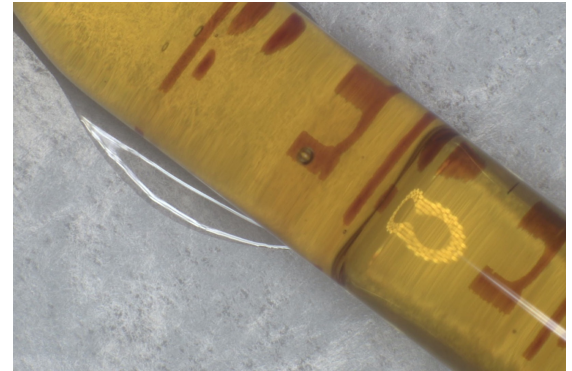
<https://portal.a2la.org/scopepdf/4961-01.pdf>

21019A

Sample Handling

tincture

test ID 9690.1	sample wt
type tincture	order 9690
lab ID 1BA29	sample date 2/1/2021
unit mL	unit weight 0.9 g



Methods

method	equipment
weights MSP-7.3.1.3	AUX120.1
potency MSP-7.5.1.5	LC-2030
terpenes MSP-7.5.1.7	QP2020/HS20
pesticides MSP-7.5.1.8	LC-8060
mycotoxins MSP-7.5.1.8	LC-8060
microbial MSP-7.5.1.1	AriaMx/Hardy
solvents MSP-7.5.1.6	QP2020/HS20
metals MSP-7.5.1.1	ICPMS2030

Potency	per mL	estimated error	Terpenes	%	estimated error	%	estimated error	%	estimated error
tetrahydrocannabinolic acid (THCa)	0%	0.00 mg ± 0.02 mg	terpenes not tested / not required						
Δ^9 -tetrahydrocannabinol (Δ^9 THC)	0%	0.00 mg ± 0.02 mg							
Δ^8 -tetrahydrocannabinol (Δ^8 THC)	0%	0.00 mg ± 0.02 mg							
tetrahydrocannabivarin (THCv)	0%	0.00 mg ± 0.02 mg							
cannabidiolic acid (CBDA)	0%	0.00 mg ± 0.02 mg							
cannabidiol (CBD)	1.79%	16.4 mg ± 0.10 mg							
cannabidivarin (CBDv)	0%	0.00 mg ± 0.02 mg							
cannabigerolic acid (CBGa)	0%	0.00 mg ± 0.02 mg							
cannabigerol (CBG)	.03%	0.27 mg ± 0.02 mg							
cannabinol (CBN)	0%	0.00 mg ± 0.02 mg							
cannabichromene (CBC)	0%	0.00 mg ± 0.02 mg							

Solvents	MT limit	1BA29	LOQ	Pesticides (MT)	MT limit	1BA29	LOQ	Pesticides (other)	1BA29	LOQ
----------	----------	-------	-----	-----------------	----------	-------	-----	--------------------	-------	-----

pesticides not tested / not required

not tested / not required

Toxic Metals	MT limit	1BA29	LOQ
--------------	----------	-------	-----

metals not tested / not required

Microbial	MT limit	1BA29	LOQ
<i>E. coli</i>	10 CFU	0 CFU	<10 CFU/g
Salmonella sp.	10 CFU	0 CFU	<10 CFU/g
molds	10000 CFU	0 CFU	<10k CFU/g

Comments

All testing was completed onsite at 6073 US93N, Olney MT •• Potency (cannabinoid concentration) is calculated from the equation: [cannabinoid] = [cannabinoid]_{HPLC} x volume_{dilution}/m_{dry}. Terpene concentration is calculated from the equation: [terpene] = (terpene mass)_{GCMS} / m_{dry}. ••• Decarboxyted cannabinoid concentration is calculated from the equation XXX_{total} = 0.877 x XXX_a + XXX •••• Standards are used to calibrate the resulting data and estimate error using a standard estimate of error method; this is combined with error from weighing and dilution using the propagation of error formula s_g² = Σ (∂f/∂i)²s_i² where i is the contributor to error. The 95% confidence range is calculated from the equation: (concentration) ± t_{CL90} x s_g. Sampling error is not

Certified by:

Justin M Johnston
Deputy Director
6073 US93N, Olney MT 59927
406-881-2019 rdb@stlmlabs.com



B1103-001

7USC1639 Certificate of Analysis

sample ID 25077

This Product Has Been Tested and Complies with 7USC1639o(1)

Stillwater Laboratories

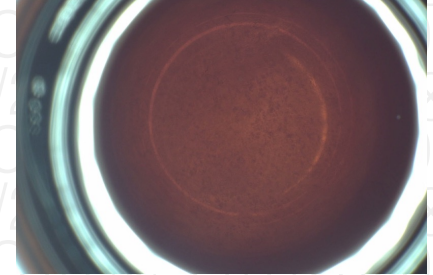
certificate ID 0LC13

total cannabinoids 480.2mg per 30mL
THC‡ ND CBD‡ 471.7mg

order 8817

7USC1639 Infused

analysis date 11/4/2020 12:11:44 PM



test tag

sample wgt 27.8 g

Inspection MSP-7.5.1.2

DESCRIPTION: Oil sample (27.80g) received in a client-labeled bottle, by commercial courier. Labeled 25077.

Potency per 30mL

Table with columns: Compound, Result, LOD, LOQ, error (95%CI k=2). Rows include tetrahydrocannabinolic acid (THCa), Δ9-tetrahydrocannabinol (Δ9 THC), Δ8-tetrahydrocannabinol (Δ8 THC), tetrahydrocannabinavarin (THCv), cannabidiolic acid (CBDA), cannabidiol (CBD), cannabidivarin (CBDv), cannabigerolic acid (CBGa), cannabigerol (CBG), cannabinalol (CBN), and cannabichromene (CBC).

‡ = decarbed NT = not tested NL = no limit, ND = not detected, LOD = detection limit , LOQ = quantitation limit

Large table with columns: Microbial, Solvents, Metals, Pesticides. Each column lists various substances and their test results (PASS, limit, etc.).

INSTRUMENTS
potency: HPLC (LC2030C-UV)
terpenes: GCMS (QP2020/HS20)
solvents: GCMS (QP2020/HS20)
pesticides: LCMSMS (LC8060)
mycotoxins: LCMSMS (LC8060)
microbial: qPCR (AriaMx) and plating
metals: ICPMS (ICPMS-2030)

SECURITY FEATURE: WATERMARK MUST MATCH CERTIFICATE ID AND ISSUE DATE

Certified by:

Handwritten signature of Kyle Larson

Stillwater Laboratories Inc.
MT License L00001, 7, 8
6073 US93N Suite 5
Olney MT 59927
406-881-2019

The data in this report is the property of Socali and is administered by Stillwater Labs. The format, layout, and security features of this report are copyrighted by Stillwater Laboratories Inc. © 2020

Kyle Larson, MSc (Biology)
Deputy Director

Printed
11/7/2020 2:04 PM



ISO/IEC 17025:2017



Certificate #4961.01

https://portal.a2la.org/scopepdf/4961-01.pdf