

CONSOLIDATED TEST RESULTS SUMMARY

Please see the following pages for full test results.

BULK SKU	BATCH #	LOQ: Limit Of Quantitation	
PRODUCT NAME	SERVING SIZE	LOD: Limit Of Detection	
LABORATORY :	OREGON ACCREDITATION: OR100028	1 g = 10 ⁻³ kg = 10 ³ mg = 10 ⁶ µg 1 mg/kg = 1 ppm = 1000 ppb	
POTENCY	PER SERVING	PER GRAM	Percent
Cannabidiol (CBD)	mg/serving	mg/g	%
Total THC (d9-THC, THCA)	mg/serving	mg/g	%
Cannabigerol (CBG)	mg/serving	mg/g	%
Cannabinol (CBN)	mg/serving	mg/g	%
Cannabichromene (CBC)	mg/serving	mg/g	%
Tetrahydrocannabinolic Acid (THCA)	mg/serving	mg/g	%
Delta-9-THC (d9-THC)	mg/serving	mg/g	%
Delta-8-THC (d8-THC)	mg/serving	mg/g	%
HEAVY METALS	PER SERVING	PER GRAM	REGULATORY ACTION LEVEL
Arsenic	µg/serving	µg/g	10 µg/day ^[1]
Cadmium	µg/serving	µg/g	4.1 µg/day ^[1]
Lead	µg/serving	µg/g	6 µg/day ^[1]
Mercury	µg/serving	µg/g	2 µg/day ^[1]
PESTICIDES	REGULATORY ACTION LEVEL		
None of the other 59 pesticides tested found above limit of detection in the sample.			10 ppb ^[1]
RESIDUAL SOLVENTS	Results	REGULATORY ACTION LEVEL	
Ethanol	µg/g	50,000 mg/day	
Heptane	µg/g	50,000 mg/day	
None of the 34 residual solvents tested found above limit of quantitation in the sample.			
MICROBIAL	PASS/FAIL		
Yeast & Mold	Pass		
Coliform	Pass		
Water Activity	Pass		
TERPENES	% OF SAMPLE		
Farnesene	%		
β-Caryophyllene	%		
α-Bisabolol	%		
Guaiol	%		
Humulene	%		
Caryophyllene Oxide	%		

1. American Herbal Pharmacopoeia. (2014). Cannabis Inflorescence: Standards of Identity, Analysis, and Quality Control. Washington DC: AHP.



12423 NE Whitaker Way
Portland, OR 97230
503-254-1794



Report Number: 23-004010/D005.R000
Report Date: 04/24/2023
ORELAP#: OR100028
Purchase Order:
Received: 04/06/23 15:53

Customer: Etz Hayim Holdings
Product identity: FORM-SG200.V2-FC16(A)
Client/Metric ID: .
Laboratory ID: 23-004010-0001

Summary

Potency:

Analyte per 1g	Result	Limits	Units	Status	
CBC per 1g	6.61		mg/1g		CBD-Total per Serving Size 471 mg/1g
CBD per 1g	471		mg/1g		
CBDV per 1g	4.40		mg/1g		THC-Total per Serving Size 1.89 mg/1g
CBE per 1g	24.8		mg/1g		(Reported in milligrams per serving)
CBG per 1g	3.98		mg/1g		
CBL per 1g	2.55		mg/1g		
CBN per 1g	4.91		mg/1g		
CBT per 1g	35.1		mg/1g		
Δ8-THCV per 1g	0.0607		mg/1g		
Δ9-THC per 1g	1.89		mg/1g		

Residual Solvents:

All analytes passing and less than LOQ.

Pesticides:

All analytes passing and less than LOQ.

Terpenes:

Analyte	Percent by weight	Percent of Total	Analyte	Percent by weight	Percent of Total
(R)-(+)-Limonene	3.50	43.64%	a-pinene	2.97	37.03%
β-Caryophyllene	0.785	9.79%	(-)-caryophyllene oxide	0.258	3.22%
α-Bisabolol	0.248	3.09%	Humulene	0.105	1.31%
β-Myrcene	0.0504	0.63%	Camphene	0.0410	0.51%
(-)-Guaial	0.0325	0.41%	(-)-β-Pinene	0.0313	0.39%
Total Terpenes	8.02	100.00%			

Metals:

Less than LOQ for all analytes.

Microbiology:

Less than LOQ for all analytes.



12423 NE Whitaker Way
 Portland, OR 97230
 503-254-1794



Report Number: 23-004010/D005.R000
Report Date: 04/24/2023
ORELAP#: OR100028
Purchase Order:
Received: 04/06/23 15:53

Customer: Etz Hayim Holdings
 16427 NE Airport Way
 PORTLAND 97230
 United States of America (USA)
Product identity: FORM-SG200.V2-FC16(A)
Client/Metric ID: .
Sample Date:
Laboratory ID: 23-004010-0001
Evidence of Cooling: No
Temp: 19.6 °C
Relinquished by: client
Serving Size #1: 1 g

Sample Results

Potency per 1g	Method: J AOAC 2015 V98-6 (mod) ^b	Units mg/se	Batch: 2306055	Analyze: 4/10/23 2:37:00 PM	
Analyte	Result	Limits	Units	LOQ	Notes
CBC per 1g	6.61		mg/1g	0.0323	
CBC-A per 1g	< LOQ		mg/1g	0.0323	
CBC-Total per 1g	6.61		mg/1g	0.0607	
CBD per 1g	471		mg/1g	3.23	
CBD-A per 1g	< LOQ		mg/1g	0.0323	
CBD-Total per 1g	471		mg/1g	3.26	
CBDV per 1g	4.40		mg/1g	0.0323	
CBDV-A per 1g	< LOQ		mg/1g	0.0323	
CBDV-Total per 1g	4.40		mg/1g	0.0604	
CBE per 1g	24.8		mg/1g	0.323	
CBG per 1g	3.98		mg/1g	0.0323	
CBG-A per 1g	< LOQ		mg/1g	0.0323	
CBG-Total per 1g	3.98		mg/1g	0.0604	
CBL per 1g	2.55		mg/1g	0.0323	
CBL-A per 1g	< LOQ		mg/1g	0.0323	
CBL-Total per 1g	2.55		mg/1g	0.0607	
CBN per 1g	4.91		mg/1g	0.0323	
CBT per 1g	35.1		mg/1g	0.323	
Δ8-THCV per 1g	0.0607		mg/1g	0.0323	
Δ10-THC-9R per 1g	< LOQ		mg/1g	0.0323	
Δ10-THC-9S per 1g	< LOQ		mg/1g	0.0323	
Δ10-THC-Total per 1g	< LOQ		mg/1g	0.0647	
Δ8-THC per 1g	< LOQ		mg/1g	0.0323	
Δ9-THC per 1g	1.89		mg/1g	0.0323	
exo-THC per 1g	< LOQ		mg/1g	0.0323	
THC-A per 1g	< LOQ		mg/1g	0.0323	
THC-Total per 1g	1.89		mg/1g	0.0607	
THCV per 1g	< LOQ		mg/1g	0.0323	
THCV-A per 1g	< LOQ		mg/1g	0.0323	
THCV-Total per 1g	< LOQ		mg/1g	0.0607	



12423 NE Whitaker Way
Portland, OR 97230
503-254-1794



Report Number: 23-004010/D005.R000
Report Date: 04/24/2023
ORELAP#: OR100028
Purchase Order:
Received: 04/06/23 15:53

Potency per 1g	Method: J AOAC 2015 V98-6 (mod) ^P	Units mg/se	Batch: 2306055	Analyze: 4/10/23 2:37:00 PM	
Analyte	Result	Limits	Units	LOQ	Notes
Total Cannabinoids per 1g	555		mg/1g		

Microbiology

Analyte	Result	Limits	Units	LOQ	Batch	Analyzed Method	Status	Notes
E.coli	< LOQ		cfu/g	10	2306299	04/16/23 AOAC 991.14 (Petrifilm) ^P		
Total Coliforms	< LOQ		cfu/g	10	2306299	04/16/23 AOAC 991.14 (Petrifilm) ^P		
Mold (RAPID Petrifilm)	< LOQ		cfu/g	10	2306300	04/17/23 AOAC 2014.05 (RAPID) ^P		
Yeast (RAPID Petrifilm)	< LOQ		cfu/g	10	2306300	04/17/23 AOAC 2014.05 (RAPID) ^P		

Solvents	Method: Residual Solvents by GC/MS ^P					Units µg/g	Batch 2306555	Analyze 04/20/23 10:34 AM			
Analyte	Result	Limits	LOQ	Status	Notes	Analyte	Result	Limits	LOQ	Status	Notes
1,4-Dioxane	< LOQ	380	100	pass		2-Butanol	< LOQ	5000	200	pass	
2-Ethoxyethanol	< LOQ	160	30.0	pass		2-Methylbutane (Isopentane)	< LOQ		200		
2-Methylpentane	< LOQ		30.0			2-Propanol (IPA)	< LOQ	5000	200	pass	
2,2-Dimethylbutane	< LOQ		30.0			2,2-Dimethylpropane (neo-pentane)	< LOQ		200		
2,3-Dimethylbutane	< LOQ		30.0			3-Methylpentane	< LOQ		30.0		
Acetone	< LOQ	5000	200	pass		Acetonitrile	< LOQ	410	100	pass	
Benzene	< LOQ	2.00	1.00	pass		Butanes (sum)	< LOQ	5000	400	pass	
Cyclohexane	< LOQ	3880	200	pass		Ethanol	< LOQ		200		
Ethyl acetate	< LOQ	5000	200	pass		Ethyl benzene	< LOQ		200		
Ethyl ether	< LOQ	5000	200	pass		Ethylene glycol	< LOQ	620	200	pass	
Ethylene oxide	< LOQ	50.0	20.0	pass		Hexanes (sum)	< LOQ	290	150	pass	
Isopropyl acetate	< LOQ	5000	200	pass		Isopropylbenzene (Cumene)	< LOQ	70.0	30.0	pass	
m,p-Xylene	< LOQ		200			Methanol	< LOQ	3000	200	pass	
Methylene chloride	< LOQ	600	60.0	pass		Methylpropane (Isobutane)	< LOQ		200		
n-Butane	< LOQ		200			n-Heptane	< LOQ	5000	200	pass	
n-Hexane	< LOQ		30.0			n-Pentane	< LOQ		200		
o-Xylene	< LOQ		200			Pentanes (sum)	< LOQ	5000	600	pass	
Propane	< LOQ	5000	200	pass		Tetrahydrofuran	< LOQ	720	100	pass	
Toluene	< LOQ	890	100	pass		Total Xylenes	< LOQ		400		
Total Xylenes and Ethyl benzene	< LOQ	2170	600	pass							



12423 NE Whitaker Way
Portland, OR 97230
503-254-1794

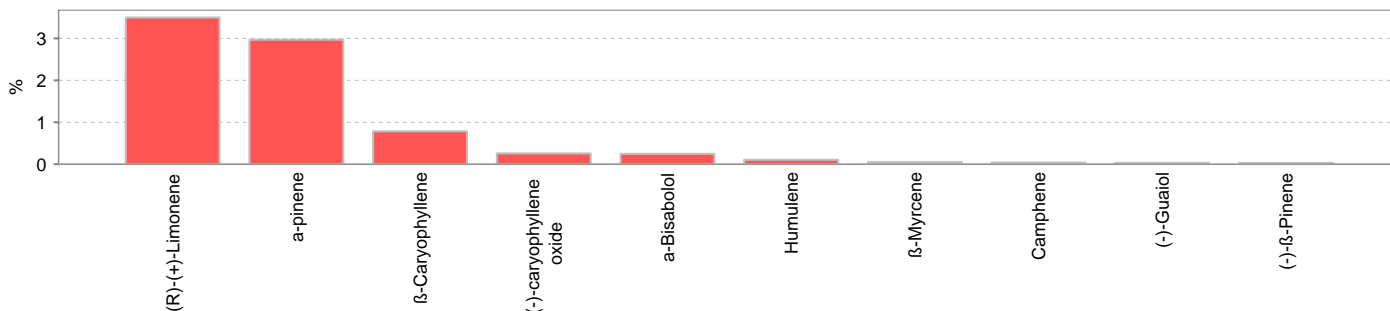


Report Number: 23-004010/D005.R000
Report Date: 04/24/2023
ORELAP#: OR100028
Purchase Order:
Received: 04/06/23 15:53

Pesticides											
Method: AOAC 2007.01 & EN 15662 (mod) ^b											
Units mg/kg Batch 2306597 Analyze 04/21/23 12:33 PM											
Analyte	Result	Limits	LOQ	Status	Notes	Analyte	Result	Limits	LOQ	Status	Notes
Abamectin [‡]	< LOQ	0.50	0.250	pass		Acephate [‡]	< LOQ	0.40	0.200	pass	
Acequinocyl [‡]	< LOQ	2.0	1.00	pass		Acetamiprid [‡]	< LOQ	0.20	0.100	pass	
Aldicarb [‡]	< LOQ	0.40	0.200	pass		Azoxystrobin [‡]	< LOQ	0.20	0.100	pass	
Bifentazate [‡]	< LOQ	0.20	0.100	pass		Bifenthrin [‡]	< LOQ	0.20	0.100	pass	
Boscalid [‡]	< LOQ	0.40	0.200	pass		Carbaryl [‡]	< LOQ	0.20	0.100	pass	
Carbofuran [‡]	< LOQ	0.20	0.100	pass		Chlorantraniliprole [‡]	< LOQ	0.20	0.100	pass	
Chlorfenapyr [‡]	< LOQ	1.0	0.500	pass		Chlorpyrifos [‡]	< LOQ	0.20	0.100	pass	
Clofentezine [‡]	< LOQ	0.20	0.100	pass		Cyfluthrin [‡]	< LOQ	1.0	0.500	pass	
Cypermethrin [‡]	< LOQ	1.0	0.500	pass		Daminozide [‡]	< LOQ	1.0	0.500	pass	
Diazinon [‡]	< LOQ	0.20	0.100	pass		Dichlorvos [‡]	< LOQ	1.0	0.500	pass	
Dimethoate [‡]	< LOQ	0.20	0.100	pass		Ethoprophos [‡]	< LOQ	0.20	0.100	pass	
Etofenprox [‡]	< LOQ	0.40	0.200	pass		Etoxazole [‡]	< LOQ	0.20	0.100	pass	
Fenoxycarb [‡]	< LOQ	0.20	0.100	pass		Fenpyroximate [‡]	< LOQ	0.40	0.200	pass	
Fipronil [‡]	< LOQ	0.40	0.200	pass		Fonicamid [‡]	< LOQ	1.0	0.400	pass	
Fludioxonil [‡]	< LOQ	0.40	0.200	pass		Hexythiazox [‡]	< LOQ	1.0	0.400	pass	
Imazalil [‡]	< LOQ	0.20	0.100	pass		Imidacloprid [‡]	< LOQ	0.40	0.200	pass	
Kresoxim-methyl [‡]	< LOQ	0.40	0.200	pass		Malathion [‡]	< LOQ	0.20	0.100	pass	
Metalaxyl [‡]	< LOQ	0.20	0.100	pass		Methiocarb [‡]	< LOQ	0.20	0.100	pass	
Methomyl [‡]	< LOQ	0.40	0.200	pass		MGK-264 [‡]	< LOQ	0.20	0.100	pass	
Myclobutanil [‡]	< LOQ	0.20	0.100	pass		Naled [‡]	< LOQ	0.50	0.250	pass	
Oxamyl [‡]	< LOQ	1.0	0.500	pass		Paclobotrazole [‡]	< LOQ	0.40	0.200	pass	
Parathion-Methyl [‡]	< LOQ	0.20	0.100	pass		Permethrin [‡]	< LOQ	0.20	0.100	pass	
Phosmet [‡]	< LOQ	0.20	0.100	pass		Piperonyl butoxide [‡]	< LOQ	2.0	1.00	pass	
Prallethrin [‡]	< LOQ	0.20	0.100	pass		Propiconazole [‡]	< LOQ	0.40	0.200	pass	
Propoxur [‡]	< LOQ	0.20	0.100	pass		Pyrethrin I (total) [‡]	< LOQ	1.0	0.500	pass	
Pyridaben [‡]	< LOQ	0.20	0.100	pass		Spinosad [‡]	< LOQ	0.20	0.100	pass	
Spiromesifen [‡]	< LOQ	0.20	0.100	pass		Spirotetramat [‡]	< LOQ	0.20	0.100	pass	
Spiroxamine [‡]	< LOQ	0.40	0.200	pass		Tebuconazole [‡]	< LOQ	0.40	0.200	pass	
Thiacloprid [‡]	< LOQ	0.20	0.100	pass		Thiamethoxam [‡]	< LOQ	0.20	0.100	pass	
Trifloxystrobin [‡]	< LOQ	0.20	0.100	pass							



Terpenes				Method: J AOAC 2015 V98-6	Units %	Batch 2306457	Analyze 04/17/23 03:42 PM		
Analyte	Result	LOQ	% of Total	Notes	Analyte	Result	LOQ	% of Total	Notes
(R)-(+)-Limonene	3.50	0.018	43.64%		a-pinene	2.97	0.018	37.03%	
β-Caryophyllene	0.785	0.018	9.788%		(-)-caryophyllene oxide	0.258	0.018	3.217%	
α-Bisabolol	0.248	0.018	3.092%		Humulene	0.105	0.018	1.309%	
β-Myrcene	0.0504	0.018	0.6284%		Camphene	0.0410	0.018	0.5112%	
(-)-Guaial	0.0325	0.018	0.4052%		(-)-β-Pinene	0.0313	0.018	0.3903%	
(±)-trans-Nerolidol	< LOQ	0.018	0.00%		(+)-Cedrol	< LOQ	0.018	0.00%	
(±)-fenchone	< LOQ	0.018	0.00%		Linalool	< LOQ	0.018	0.00%	
Terpinolene	< LOQ	0.018	0.00%		(±)-cis-Nerolidol	< LOQ	0.018	0.00%	
Sabinene	< LOQ	0.018	0.00%		Geraniol	< LOQ	0.018	0.00%	
(±)-Camphor	< LOQ	0.018	0.00%		(-)-α-Terpineol	< LOQ	0.018	0.00%	
valencene	< LOQ	0.018	0.00%		a-phellandrene	< LOQ	0.018	0.00%	
(+)-Borneol	< LOQ	0.018	0.00%		Geranyl acetate	< LOQ	0.018	0.00%	
Sabinene hydrate	< LOQ	0.018	0.00%		trans-β-Ocimene	< LOQ	0.012	0.00%	
α-Terpinene	< LOQ	0.018	0.00%		d-3-Carene	< LOQ	0.018	0.00%	
Isoborneol	< LOQ	0.018	0.00%		(+)-Pulegone	< LOQ	0.018	0.00%	
γ-Terpinene	< LOQ	0.018	0.00%		(-)-Isopulegol	< LOQ	0.018	0.00%	
(+)-fenchol	< LOQ	0.018	0.00%		a-cedrene	< LOQ	0.018	0.00%	
cis-β-Ocimene	< LOQ	0.006	0.00%		Eucalyptol	< LOQ	0.018	0.00%	
farnesene	< LOQ	0.018	0.00%		Menthol	< LOQ	0.018	0.00%	
nerol	< LOQ	0.018	0.00%		p-Cymene	< LOQ	0.018	0.00%	
Total Terpenes	8.02								



Metals								
Analyte	Result	Limits	Units	LOQ	Batch	Analyzed Method	Status	Notes
Arsenic [‡]	< LOQ	0.200	mg/kg	0.0963	2306515	04/18/23 AOAC 2013.06 (mod.) ^p	pass	
Cadmium [‡]	< LOQ	0.200	mg/kg	0.0963	2306515	04/18/23 AOAC 2013.06 (mod.) ^p	pass	
Lead [‡]	< LOQ	0.500	mg/kg	0.0963	2306515	04/18/23 AOAC 2013.06 (mod.) ^p	pass	
Mercury [‡]	< LOQ	0.100	mg/kg	0.0482	2306515	04/18/23 AOAC 2013.06 (mod.) ^p	pass	



12423 NE Whitaker Way
Portland, OR 97230
503-254-1794



Report Number: 23-004010/D005.R000
Report Date: 04/24/2023
ORELAP#: OR100028
Purchase Order:
Received: 04/06/23 15:53

Abbreviations

Limits: Action Levels per OAR-333-007-0400, OAR-333-007-0210, OAR-333-007-0220, CCR title 16-division 42. BCC-section 5723

Limit(s) of Quantitation (LOQ): The minimum levels, concentrations, or quantities of a target variable (e.g., target analyte) that can be reported with a specified degree of confidence.

Ⓐ = ISO/IEC 17025:2017 accredited method.

Ⓜ = TNI accredited analyte.

Units of Measure

cfu/g = Colony forming units per gram

g = g

µg/g = Microgram per gram

mg/kg = Milligram per kilogram = parts per million (ppm)

mg/1g = Milligram per 1g

% = Percentage of sample

% wt = µg/g divided by 10,000

Approved Signatory

Derrick Tanner
General Manager



12423 NE Whitaker Way
 Portland, OR 97230
 503-254-1794



Report Number: 23-004010/D005.R000
Report Date: 04/24/2023
ORELAP#: OR100028
Purchase Order:
Received: 04/06/23 15:53

Revision: 1 Document ID: 7148
 Legacy ID: Worksheet Validated 04/20/2021

Laboratory Quality Control Results

JAOAC2015 V98-6 Batch ID: 2306055

Laboratory Control Sample									
Analyte	LCS	Result	Spike	Units	% Rec	Limits		Evaluation	Notes
CBDVA	2	0.0334	0.033	%	100	80.0	- 120	Acceptable	
CBDV	2	0.0333	0.033	%	99.8	80.0	- 120	Acceptable	
CBE	2	0.0337	0.033	%	101	80.0	- 120	Acceptable	
CBD A	1	0.0294	0.031	%	95.1	90.0	- 110	Acceptable	
CBG A	1	0.0247	0.026	%	95.9	80.0	- 120	Acceptable	
CBG	1	0.0299	0.031	%	96.2	80.0	- 120	Acceptable	
CBD	1	0.0258	0.027	%	94.2	90.0	- 110	Acceptable	
THCV	2	0.0330	0.033	%	98.9	80.0	- 120	Acceptable	
δ8THCV	2	0.0326	0.033	%	97.8	80.0	- 120	Acceptable	
THCV A	2	0.0332	0.033	%	99.7	80.0	- 120	Acceptable	
CBN	1	0.0265	0.027	%	98.0	80.0	- 120	Acceptable	
exo-THC	2	0.0320	0.033	%	95.9	80.0	- 120	Acceptable	
δ9THC	1	0.0315	0.031	%	101	90.0	- 110	Acceptable	
δ8THC	1	0.0310	0.031	%	99.4	90.0	- 110	Acceptable	
9S-Δ10THC	1	0.0313	0.031	%	99.7	80.0	- 120	Acceptable	
CBL	2	0.0340	0.033	%	102	80.0	- 120	Acceptable	
9R-Δ10THC	1	0.0275	0.032	%	86.0	80.0	- 120	Acceptable	
CBC	2	0.0334	0.033	%	100	80.0	- 120	Acceptable	
THCA	1	0.0327	0.036	%	91.1	90.0	- 110	Acceptable	
CBCA	2	0.0341	0.033	%	102	80.0	- 120	Acceptable	
CBLA	2	0.0339	0.033	%	102	80.0	- 120	Acceptable	
CBT	2	0.0319	0.033	%	95.6	80.0	- 120	Acceptable	

Method Blank						
Analyte	Result	LOQ	Units	Limits	Evaluation	Notes
CBDVA	<LOQ	0.003	%	< 0.003	Acceptable	
CBDV	<LOQ	0.003	%	< 0.003	Acceptable	
CBE	<LOQ	0.003	%	< 0.003	Acceptable	
CBD A	<LOQ	0.003	%	< 0.003	Acceptable	
CBG A	<LOQ	0.003	%	< 0.003	Acceptable	
CBG	<LOQ	0.003	%	< 0.003	Acceptable	
CBD	<LOQ	0.003	%	< 0.003	Acceptable	
THCV	<LOQ	0.003	%	< 0.003	Acceptable	
δ8THCV	<LOQ	0.003	%	< 0.003	Acceptable	
THCV A	<LOQ	0.003	%	< 0.003	Acceptable	
CBN	<LOQ	0.003	%	< 0.003	Acceptable	
exo-THC	<LOQ	0.003	%	< 0.003	Acceptable	
δ9THC	<LOQ	0.003	%	< 0.003	Acceptable	
δ8THC	<LOQ	0.003	%	< 0.003	Acceptable	
9S-Δ10THC	<LOQ	0.003	%	< 0.003	Acceptable	
CBL	<LOQ	0.003	%	< 0.003	Acceptable	
9R-Δ10THC	<LOQ	0.003	%	< 0.003	Acceptable	
CBC	<LOQ	0.003	%	< 0.003	Acceptable	
THCA	<LOQ	0.003	%	< 0.003	Acceptable	
CBCA	<LOQ	0.003	%	< 0.003	Acceptable	
CBLA	<LOQ	0.003	%	< 0.003	Acceptable	
CBT	<LOQ	0.003	%	< 0.003	Acceptable	

Abbreviations
 ND - None Detected at or above MRI
 RPD - Relative Percent Difference
 LOQ - Limit of Quantitation

Units of Measure:
 %- Percent



12423 NE Whitaker Way
 Portland, OR 97230
 503-254-1794

Report Number: 23-004010/D005.R000
Report Date: 04/24/2023
ORELAP#: OR100028
Purchase Order:
Received: 04/06/23 15:53



Revision: 1 Document ID: 7148
 Legacy ID: Worksheet Validated 04/20/2021

Laboratory Quality Control Results

JAOAC2015 V98-6		Batch ID: 2308055						
Sample Duplicate		Sample ID: 23-003937-0001						
Analyte	Result	Org. Result	LOQ	Units	RPD	Limits	Evaluation	Notes
CBDVA	<LOQ	<LOQ	0.003	%	NA	< 20	Acceptable	
CBDV	<LOQ	<LOQ	0.003	%	NA	< 20	Acceptable	
CBE	<LOQ	<LOQ	0.003	%	NA	< 20	Acceptable	
CBDAA	<LOQ	<LOQ	0.003	%	NA	< 20	Acceptable	
CBDAP	<LOQ	<LOQ	0.003	%	NA	< 20	Acceptable	
CBC	<LOQ	<LOQ	0.003	%	NA	< 20	Acceptable	
CBD	0.0138	0.0138	0.003	%	0.0358	< 20	Acceptable	
THCV	<LOQ	<LOQ	0.003	%	NA	< 20	Acceptable	
Δ8THCV	<LOQ	<LOQ	0.003	%	NA	< 20	Acceptable	
THCV/A	<LOQ	<LOQ	0.003	%	NA	< 20	Acceptable	
CBN	<LOQ	<LOQ	0.003	%	NA	< 20	Acceptable	
exo-THC	<LOQ	<LOQ	0.003	%	NA	< 20	Acceptable	
Δ9THC	<LOQ	<LOQ	0.003	%	NA	< 20	Acceptable	
Δ8THC	<LOQ	<LOQ	0.003	%	NA	< 20	Acceptable	
9S-Δ10THC	<LOQ	<LOQ	0.003	%	NA	< 20	Acceptable	
CBL	<LOQ	<LOQ	0.003	%	NA	< 20	Acceptable	
9R-Δ10THC	<LOQ	<LOQ	0.003	%	NA	< 20	Acceptable	
CBC	<LOQ	<LOQ	0.003	%	NA	< 20	Acceptable	
THCA	<LOQ	<LOQ	0.003	%	NA	< 20	Acceptable	
CBCA	<LOQ	<LOQ	0.003	%	NA	< 20	Acceptable	
CBLA	<LOQ	<LOQ	0.003	%	NA	< 20	Acceptable	
CBT	<LOQ	<LOQ	0.003	%	NA	< 20	Acceptable	

Abbreviations

- ND - None Detected at or above MRI
- RPD - Relative Percent Difference
- LOQ - Limit of Quantitation

Units of Measure:

%- Percent



12423 NE Whitaker Way
 Portland, OR 97230
 503-254-1794



Report Number: 23-004010/D005.R000
Report Date: 04/24/2023
ORELAP#: OR100028
Purchase Order:
Received: 04/06/23 15:53

Revision: 1 Document ID: 7086
 Legacy ID: CFL-E57Worksheet Validated 11/04/2020

Terpenes Quality Control Results

Method Reference: EPA5035				Batch ID: 2306457					
Method Blank				Laboratory Control Sample					
Analyte	Result	LOQ	Notes	Result	LCS	Units	LCS% Rec	Limits	Notes
a-pinene	<LOQ	< 200		434	500	µg/g	87%	70 - 130	
Camphene	<LOQ	< 200		428	500	µg/g	86%	70 - 130	
Sabinene	<LOQ	< 200		419	500	µg/g	84%	70 - 130	
b-Pinene	<LOQ	< 200		413	500	µg/g	83%	70 - 130	
b-Myrcene	<LOQ	< 200		416	500	µg/g	83%	70 - 130	
a-phellandrene	<LOQ	< 200		415	500	µg/g	83%	70 - 130	
d-3-Carene	<LOQ	< 200		414	500	µg/g	83%	70 - 130	
a-Terpinene	<LOQ	< 200		420	500	µg/g	84%	70 - 130	
p-Cymene	<LOQ	< 200		413	500	µg/g	83%	70 - 130	
D-Limonene	<LOQ	< 200		423	500	µg/g	85%	70 - 130	
Eucalyptol	<LOQ	< 200		409	500	µg/g	82%	70 - 130	
b-cis-Cimene	<LOQ	< 67		132	167	µg/g	79%	70 - 130	
b-trans-Cimene	<LOQ	< 133		279	333	µg/g	84%	70 - 130	
g-Terpinene	<LOQ	< 200		419	500	µg/g	84%	70 - 130	
Sabinene Hydrate	<LOQ	< 200		422	500	µg/g	84%	70 - 130	
Terpinolene	<LOQ	< 200		430	500	µg/g	86%	70 - 130	
D-Fenchone	<LOQ	< 200		427	500	µg/g	85%	70 - 130	
Linalool	<LOQ	< 200		432	500	µg/g	86%	70 - 130	
Fenchol	<LOQ	< 200		433	500	µg/g	87%	70 - 130	
Camphor	<LOQ	< 200		425	500	µg/g	85%	70 - 130	
Isopulego	<LOQ	< 200		438	500	µg/g	88%	70 - 130	
Isoborneol	<LOQ	< 200		433	500	µg/g	87%	70 - 130	
Borneol	<LOQ	< 200		441	500	µg/g	88%	70 - 130	
DL-Menthol	<LOQ	< 200		416	500	µg/g	83%	70 - 130	
Terpineol	<LOQ	< 200		417	500	µg/g	83%	70 - 130	
Nerd	<LOQ	< 200		397	500	µg/g	79%	70 - 130	
Pulegone	<LOQ	< 200		434	500	µg/g	87%	70 - 130	
Geraniol	<LOQ	< 200		425	500	µg/g	85%	70 - 130	
Geranyl_Acdate	<LOQ	< 200		430	500	µg/g	86%	70 - 130	
a-Cedrene	<LOQ	< 200		420	500	µg/g	84%	70 - 130	
b-Caryophyllene	<LOQ	< 200		415	500	µg/g	83%	70 - 130	
a-Humulene	<LOQ	< 200		430	500	µg/g	86%	70 - 130	
Valene	<LOQ	< 200		390	500	µg/g	78%	70 - 130	
cis-Nerolidol	<LOQ	< 200		427	500	µg/g	85%	70 - 130	
a-Farnesene	<LOQ	< 200		421	500	µg/g	84%	70 - 130	
trans-Nerolidol	<LOQ	< 200		449	500	µg/g	90%	70 - 130	
Caryophyllene_Oxide	<LOQ	< 200		431	500	µg/g	86%	70 - 130	
Guaiol	<LOQ	< 200		440	500	µg/g	88%	70 - 130	
Cedrol	<LOQ	< 200		425	500	µg/g	85%	70 - 130	
a-Bisabolol	<LOQ	< 200		433	500	µg/g	87%	70 - 130	

Definitions

LOQ	Limit of Quantitation
LCS	Laboratory Control Sample
% REC	Percent Recovery



12423 NE Whitaker Way
 Portland, OR 97230
 503-254-1794



Report Number: 23-004010/D005.R000
Report Date: 04/24/2023
ORELAP#: OR100028
Purchase Order:
Received: 04/06/23 15:53

Revision: 1 Document ID: 7086
 Legacy ID: CFL-E57Worksheet Validated 11/04/2020

Terpenes Quality Control Results

Method Reference: EPA5035		Batch ID: 2306457					
Sample/ Sample Duplicate		Sample ID: 23-004414-0001					
Analyte	Result	Org. Result	LOQ	Units	% RPD	LIMIT	Notes
a-pinene	3730	3740	195	µg/g	0%	< 20	
Camphene	393	398	195	µg/g	1%	< 20	
Sabinene	<LOQ	<LOQ	195	µg/g	0%	< 20	
b-Pinene	1160	1160	195	µg/g	0%	< 20	
b-Myrcene	8610	8570	195	µg/g	0%	< 20	
a-phellandrene	<LOQ	<LOQ	195	µg/g	0%	< 20	
d-3-Carene	<LOQ	<LOQ	195	µg/g	0%	< 20	
a-Terpinene	<LOQ	<LOQ	195	µg/g	0%	< 20	
p-Cymene	<LOQ	<LOQ	195	µg/g	0%	< 20	
D-Limonene	15100	15100	195	µg/g	0%	< 20	
Eucalyptol	<LOQ	<LOQ	195	µg/g	0%	< 20	
b-cis-Cimene	151	149	64.9	µg/g	1%	< 20	
b-trans-Cimene	483	482	130	µg/g	0%	< 20	
g-Terpinene	<LOQ	<LOQ	195	µg/g	0%	< 20	
Sabinene Hydrate	<LOQ	<LOQ	195	µg/g	0%	< 20	
Terpinolene	591	591	195	µg/g	0%	< 20	
D-Fenchone	<LOQ	<LOQ	195	µg/g	0%	< 20	
Linalool	3430	3430	195	µg/g	0%	< 20	
Fenchol	1630	1610	195	µg/g	1%	< 20	
Camphor	<LOQ	<LOQ	195	µg/g	0%	< 20	
Isopulego	<LOQ	<LOQ	195	µg/g	0%	< 20	
Isoborneol	<LOQ	<LOQ	195	µg/g	0%	< 20	
Borneol	356	372	195	µg/g	4%	< 20	
DL-Menthhol	<LOQ	<LOQ	195	µg/g	0%	< 20	
Terpineol	1330	1330	195	µg/g	0%	< 20	
Nerd	<LOQ	<LOQ	195	µg/g	0%	< 20	
Pulegone	<LOQ	<LOQ	195	µg/g	0%	< 20	
Geraniol	<LOQ	<LOQ	195	µg/g	0%	< 20	
Geranyl Acetate	<LOQ	<LOQ	195	µg/g	0%	< 20	
a-Cedrene	<LOQ	<LOQ	195	µg/g	0%	< 20	
b-Caryophyllene	15000	14900	195	µg/g	1%	< 20	
a-Humulene	6800	6750	195	µg/g	1%	< 20	
Valnene	274	251	195	µg/g	9%	< 20	
cis-Nerolidol	<LOQ	<LOQ	195	µg/g	0%	< 20	
a-Farnesene	<LOQ	<LOQ	195	µg/g	0%	< 20	
trans-Nerolidol	764	793	195	µg/g	4%	< 20	
Caryophyllene Oxide	608	581	195	µg/g	5%	< 20	
Guaiol	747	735	195	µg/g	2%	< 20	
Cedrol	<LOQ	<LOQ	195	µg/g	0%	< 20	
a-Bisabolol	1840	1790	195	µg/g	3%	< 20	

Definitions

RPD Relative Percent Difference



12423 NE Whitaker Way
 Portland, OR 97230
 503-254-1794

Report Number: 23-004010/D005.R000
 Report Date: 04/24/2023
 ORELAP#: OR100028
 Purchase Order:
 Received: 04/06/23 15:53



Revision: 2 Document ID: 7087
 Legacy ID: CFL-E33Effective:

Laboratory Quality Control Results

Residual Solvents				Batch ID: 2306555					
Method Blank				Laboratory Control Sample					
Analyte	Result	LOQ	Notes	Result	Spike	Units	% Rec	Limits	Notes
Propane	ND	< 200		458	584	µg/g	78.4	60 - 120	
Isobutane	ND	< 200		553	767	µg/g	72.1	60 - 120	
Butane	ND	< 200		598	782	µg/g	76.5	60 - 120	
2,2-Dimethylpropane	ND	< 200		762	939	µg/g	81.2	60 - 120	
Methanol	ND	< 200		1520	1610	µg/g	94.4	60 - 120	
Ethylene Oxide	ND	< 30		46.9	57.1	µg/g	82.1	60 - 120	
2-Methylbutane	ND	< 200		1540	1600	µg/g	96.3	60 - 120	
Pentane	ND	< 200		1580	1610	µg/g	98.1	60 - 120	
Ethanol	ND	< 200		1520	1600	µg/g	95.0	70 - 130	
Ethyl Ether	ND	< 200		1560	1610	µg/g	96.9	60 - 120	
2,2-Dimethylbutane	ND	< 30		168	173	µg/g	97.1	60 - 120	
Acetone	ND	< 200		1550	1620	µg/g	95.7	60 - 120	
2-Propanol	ND	< 200		1520	1600	µg/g	95.0	60 - 120	
Ethyl Formate	ND	< 500		1690	1610	µg/g	105.0	70 - 130	
Acetonitrile	ND	< 100		440	488	µg/g	90.2	60 - 120	
Methyl Acetate	ND	< 500		1420	1610	µg/g	88.2	70 - 130	
2,3-Dimethylbutane	ND	< 30		163	165	µg/g	98.8	60 - 120	
Dichloromethane	ND	< 60		462	487	µg/g	94.9	60 - 120	
2-Methylpentane	ND	< 30		146	160	µg/g	91.3	60 - 120	
MTBE	ND	< 500		1460	1600	µg/g	91.3	70 - 130	
3-Methylpentane	ND	< 30		154	161	µg/g	95.7	60 - 120	
Hexane	ND	< 30		151	162	µg/g	93.2	60 - 120	
1-Propanol	ND	< 500		1470	1620	µg/g	90.7	70 - 130	
Methylethylketone	ND	< 500		1430	1610	µg/g	88.8	70 - 130	
Ethyl acetate	ND	< 200		1470	1600	µg/g	91.9	60 - 120	
2-Butanol	ND	< 200		1470	1610	µg/g	91.3	60 - 120	
Tetrahydrofuran	ND	< 100		427	483	µg/g	88.4	60 - 120	
Cyclohexane	ND	< 200		1480	1610	µg/g	91.9	60 - 120	
2-methyl-1-propanol	ND	< 500		1340	1630	µg/g	82.2	70 - 130	
Benzene	ND	< 1		4.44	4.98	µg/g	89.2	60 - 120	
Isopropyl Acetate	ND	< 200		1490	1610	µg/g	92.5	60 - 120	
Heptane	ND	< 200		1470	1620	µg/g	90.7	60 - 120	
1-Butanol	ND	< 500		1380	1600	µg/g	86.3	70 - 130	
Propyl Acetate	ND	< 500		1370	1620	µg/g	84.6	70 - 130	
1,4-Dioxane	ND	< 100		425	494	µg/g	86.0	60 - 120	
2-Ethoxyethanol	ND	< 30		145	165	µg/g	87.9	60 - 120	
Methylisobutylketone	ND	< 500		1380	1610	µg/g	85.7	70 - 130	
3-Methyl-1-butanol	ND	< 500		1380	1610	µg/g	85.7	70 - 130	
Ethylene Glycol	ND	< 200		392	488	µg/g	80.7	60 - 120	
Toluene	ND	< 100		416	513	µg/g	81.1	60 - 120	
Isobutyl Acetate	ND	< 500		1340	1600	µg/g	83.8	70 - 130	
1-Pentanol	ND	< 500		1300	1610	µg/g	80.7	70 - 130	
Butyl Acetate	ND	< 500		1310	1610	µg/g	81.4	70 - 130	
Ethylbenzene	ND	< 200		793	967	µg/g	82.0	60 - 120	
m,p-Xylene	ND	< 200		807	994	µg/g	81.2	60 - 120	
o-Xylene	ND	< 200		800	992	µg/g	80.6	60 - 120	
Cumene	ND	< 30		139	171	µg/g	81.3	60 - 120	
Anisole	ND	< 500		1170	1610	µg/g	72.7	70 - 130	
DMSO	ND	< 500		1130	1610	µg/g	70.2	70 - 130	
1,2-dimethoxyethane	ND	< 50		147	172	µg/g	85.5	70 - 130	
Triethylamine	ND	< 500		1420	1620	µg/g	87.7	70 - 130	
N,N-dimethylformamide	ND	< 150		381	499	µg/g	76.4	70 - 130	
N,N-dimethylacetamide	ND	< 150		371	491	µg/g	75.6	70 - 130	
Pyridine	ND	< 50		134	171	µg/g	78.4	70 - 130	
Silfolane	ND	< 50		123	160	µg/g	76.9	70 - 130	
1,2-Dichloroethane	ND	< 1		0.821	1	µg/g	82.1	70 - 130	
Chloroform	ND	< 1		0.863	1	µg/g	86.3	70 - 130	
Trichloroethylene	ND	< 1		0.931	1	µg/g	93.1	70 - 130	
1,1-Dichloroethane	ND	< 1		0.806	1	µg/g	80.6	70 - 130	



12423 NE Whitaker Way
 Portland, OR 97230
 503-254-1794



Report Number: 23-004010/D005.R000
Report Date: 04/24/2023
ORELAP#: OR100028
Purchase Order:
Received: 04/06/23 15:53

Revision: 2 Document ID: 7087
 Legacy ID: CFL-E33Effective:

QC- Sample Duplicate		Sample ID: 23-003420-0001						
Analyte	Result	Org. Result	LOQ Units	RPD	Limits	Accept/ Fail	Notes	
Propane	ND	ND	200 µg/g	0.0	< 20	Acceptable		
Isobutane	ND	ND	200 µg/g	0.0	< 20	Acceptable		
Butane	ND	ND	200 µg/g	0.0	< 20	Acceptable		
2,2-Dimethylpropane	ND	ND	200 µg/g	0.0	< 20	Acceptable		
Methanol	ND	ND	200 µg/g	0.0	< 20	Acceptable		
Ethylene Oxide	ND	ND	30 µg/g	0.0	< 20	Acceptable		
2-Methylbutane	ND	ND	200 µg/g	0.0	< 20	Acceptable		
Pentane	ND	ND	200 µg/g	0.0	< 20	Acceptable		
Ethanol	ND	ND	200 µg/g	0.0	< 20	Acceptable		
Ethyl Ether	ND	ND	200 µg/g	0.0	< 20	Acceptable		
2,2-Dimethylbutane	ND	ND	30 µg/g	0.0	< 20	Acceptable		
Acetone	ND	ND	200 µg/g	0.0	< 20	Acceptable		
2-Propanol	ND	ND	200 µg/g	0.0	< 20	Acceptable		
Ethyl Formate	ND	ND	500 µg/g	0.0	< 20	Acceptable		
Acetonitrile	ND	ND	100 µg/g	0.0	< 20	Acceptable		
Methyl Acetate	ND	ND	500 µg/g	0.0	< 20	Acceptable		
2,3-Dimethylbutane	ND	ND	30 µg/g	0.0	< 20	Acceptable		
Dichloromethane	ND	ND	60 µg/g	0.0	< 20	Acceptable		
2-Methylpentane	ND	ND	30 µg/g	0.0	< 20	Acceptable		
MTBE	ND	ND	500 µg/g	0.0	< 20	Acceptable		
3-Methylpentane	ND	ND	30 µg/g	0.0	< 20	Acceptable		
Hexane	ND	ND	30 µg/g	0.0	< 20	Acceptable		
1-Propanol	ND	ND	500 µg/g	0.0	< 20	Acceptable		
Methylethylketone	ND	ND	500 µg/g	0.0	< 20	Acceptable		
Ethyl acetate	ND	ND	200 µg/g	0.0	< 20	Acceptable		
2-Butanol	ND	ND	200 µg/g	0.0	< 20	Acceptable		
Tetrahydrofuran	ND	ND	100 µg/g	0.0	< 20	Acceptable		
Cyclohexane	ND	ND	200 µg/g	0.0	< 20	Acceptable		
2-methyl-1-propanol	ND	ND	500 µg/g	0.0	< 20	Acceptable		
Benzene	ND	ND	1 µg/g	0.0	< 20	Acceptable		
Isopropyl Acetate	ND	ND	200 µg/g	0.0	< 20	Acceptable		
Heptane	ND	ND	200 µg/g	0.0	< 20	Acceptable		
1-Butanol	ND	ND	500 µg/g	0.0	< 20	Acceptable		
Propyl Acetate	ND	ND	500 µg/g	0.0	< 20	Acceptable		
1,4-Dioxane	ND	ND	100 µg/g	0.0	< 20	Acceptable		
2-Ethoxyethanol	ND	ND	30 µg/g	0.0	< 20	Acceptable		
Methylisobutylketone	ND	ND	500 µg/g	0.0	< 20	Acceptable		
3-Methyl-1-butanol	ND	ND	500 µg/g	0.0	< 20	Acceptable		
Ethylene Glycol	ND	ND	200 µg/g	0.0	< 20	Acceptable		
Toluene	ND	ND	100 µg/g	0.0	< 20	Acceptable		
Isobutyl Acetate	ND	ND	500 µg/g	0.0	< 20	Acceptable		
1-Pentanol	ND	ND	500 µg/g	0.0	< 20	Acceptable		
Butyl Acetate	ND	ND	500 µg/g	0.0	< 20	Acceptable		
Ethylbenzene	ND	ND	200 µg/g	0.0	< 20	Acceptable		
m,p-Xylene	ND	ND	200 µg/g	0.0	< 20	Acceptable		
o-Xylene	ND	ND	200 µg/g	0.0	< 20	Acceptable		
Cumene	ND	ND	30 µg/g	0.0	< 20	Acceptable		
Anisole	ND	ND	500 µg/g	0.0	< 20	Acceptable		
DMSO	ND	ND	500 µg/g	0.0	< 20	Acceptable		
1,2-dimethoxyethane	ND	ND	50 µg/g	0.0	< 20	Acceptable		
Triethylamine	ND	ND	500 µg/g	0.0	< 20	Acceptable		
N,N-dimethylformamide	ND	ND	150 µg/g	0.0	< 20	Acceptable		
N,N-dimethylacetamide	ND	ND	150 µg/g	0.0	< 20	Acceptable		
Pyridine	ND	ND	50 µg/g	0.0	< 20	Acceptable		
Sulfolane	ND	ND	50 µg/g	0.0	< 20	Acceptable		
1,2-Dichloroethane	ND	ND	1 µg/g	0.0	< 20	Acceptable		
Chloroform	ND	ND	1 µg/g	0.0	< 20	Acceptable		
Trichloroethylene	ND	ND	1 µg/g	0.0	< 20	Acceptable		
1,1-Dichloroethane	ND	ND	1 µg/g	0.0	< 20	Acceptable		

Abbreviations

ND - None Detected at or above MRL
 RPD- Relative Percent Difference
 LOQ- Limit of Quantitation

Units of Measure:

µg/g- Microgram per gram or ppm



12423 NE Whitaker Way
Portland, OR 97230
503-254-1794



Report Number: 23-004010/D005.R000
Report Date: 04/24/2023
ORELAP#: OR100028
Purchase Order:
Received: 04/06/23 15:53

Revision: 3 Document ID: 3120
LegacyID: CFLC21WorksheetValidated 10/30/2020

Laboratory Pesticide Quality Control Results

AOAC2007.1 & EN 15662		Units: mg/Kg			Batch ID 2306597			
Method Blank	Blank Result	Blank Limits	Notes	LCS Result	LCS Spk	LCS % Re	Limits	Notes
Abamectin	0.00	< 0.250		1.094	1.000	109.4	50.0 150	
Acephate	0.00	< 0.200		0.800	0.800	100.0	60.0 120	
Acetamiprid	0.00	< 1.000		3.545	4.000	88.6	40.0 160	
Acetamiprid	0.00	< 0.100		0.433	0.400	108.3	60.0 120	
Aldicarb	0.00	< 0.200		0.844	0.800	105.5	60.0 120	
Azoxystrobin	0.00	< 0.100		0.429	0.400	107.3	60.0 120	
Bifenazate	0.00	< 0.100		0.490	0.400	122.5	60.0 120	Q1
Bifenthrin	0.00	< 0.100		0.396	0.400	99.1	50.0 150	
Boscalid	0.00	< 0.200		0.920	0.800	115.0	60.0 120	
Carbaryl	0.00	< 0.100		0.420	0.400	104.9	60.0 120	
Carbendazim	0.00	< 0.100		0.431	0.400	107.9	60.0 120	
Chlorantraniliprole	0.00	< 0.100		0.419	0.400	104.7	60.0 120	
Chlorfenapyr	0.00	< 0.500		2.346	2.000	117.3	60.0 120	
Chlorpyrifos	0.00	< 0.100		0.403	0.400	100.7	60.0 120	
Clofentezine	0.00	< 0.100		0.422	0.400	105.4	60.0 120	
Cyfluthrin	0.00	< 0.500		2.172	2.000	108.6	50.0 150	
Cypermethrin	0.00	< 0.500		2.093	2.000	104.7	50.0 150	
Daminozide	0.215	< 0.500		2.409	2.000	120.5	60.0 120	Q1
Diazinon	0.00	< 0.100		0.467	0.400	116.8	60.0 120	
Dichlorvos	0.00	< 0.500		2.060	2.000	103.0	60.0 120	
Dimethoate	0.00	< 0.100		0.414	0.400	103.6	60.0 120	
Ethiofencarb	0.00	< 0.100		0.427	0.400	106.7	60.0 120	
Etofenprox	0.00	< 0.200		0.822	0.800	102.8	50.0 150	
Etoxazole	0.00	< 0.100		0.426	0.400	106.4	60.0 120	
Fenoxycarb	0.00	< 0.100		0.421	0.400	105.3	60.0 120	
Fenpyroximate	0.00	< 0.200		0.904	0.800	113.1	60.0 120	
Fipronil	0.00	< 0.200		0.822	0.800	102.7	60.0 120	
Fonicamid	0.00	< 0.250		1.019	1.000	101.9	60.0 120	
Fudioxonil	0.00	< 0.200		0.906	0.800	113.2	50.0 150	
Hexythiazox	0.00	< 0.250		1.037	1.000	103.7	60.0 120	
Imazalil	0.00	< 0.100		0.426	0.400	106.5	60.0 120	
Imidacloprid	0.00	< 0.200		0.839	0.800	104.9	60.0 120	
Kiesoxim-methyl	0.00	< 0.200		0.857	0.800	107.1	60.0 120	
Malathion	0.00	< 0.100		0.430	0.400	107.4	60.0 120	
Metaxyl	0.00	< 0.100		0.442	0.400	110.5	60.0 120	
Methiocarb	0.00	< 0.100		0.421	0.400	105.3	60.0 120	
Methomyl	0.00	< 0.200		0.849	0.800	106.1	60.0 120	
MCK-264	0.00	< 0.100		0.433	0.400	108.3	50.0 150	
Mydobutanol	0.00	< 0.100		0.443	0.400	110.8	60.0 120	
Naled	0.00	< 0.250		1.021	1.000	102.1	50.0 150	
Oxamyl	0.00	< 0.500		2.166	2.000	108.3	60.0 120	
Padobutrazole	0.00	< 0.200		0.898	0.800	112.2	60.0 120	
Parathion-Methyl	0.00	< 0.100		0.508	0.400	126.9	50.0 150	
Permethrin	0.002	< 0.100		0.424	0.400	106.0	50.0 150	
Phosmet	0.00	< 0.100		0.416	0.400	104.1	50.0 150	
Piperonyl butoxide	0.00	< 0.500		2.250	2.000	112.5	60.0 120	
Prallethrin	0.00	< 0.100		0.418	0.400	104.4	60.0 120	
Propiconazole	0.00	< 0.200		0.863	0.800	107.9	60.0 120	
Propoxur	0.00	< 0.100		0.426	0.400	106.9	60.0 120	
Pyrethrin (Summe)	0.00	< 0.100		0.522	0.488	106.9	60.0 120	
Pyridaben	0.00	< 0.100		0.419	0.400	104.8	50.0 150	
Spinosad	0.00	< 0.100		0.413	0.388	106.6	50.0 150	
Spiromesfen	0.00	< 0.100		0.446	0.400	111.1	60.0 120	
Spirotetramat	0.00	< 0.100		0.435	0.400	108.7	60.0 120	
Spiroxamine	0.00	< 0.200		0.864	0.800	107.9	60.0 120	
Tebuconazole	0.00	< 0.200		0.900	0.800	112.5	60.0 120	
Thiadoprid	0.00	< 0.100		0.425	0.400	106.2	60.0 120	
Thiamethoxam	0.00	< 0.100		0.437	0.400	109.2	60.0 120	
Trifloxystrobin	0.00	< 0.100		0.427	0.400	106.9	60.0 120	



12423 NE Whitaker Way
 Portland, OR 97230
 503-254-1794



Report Number: 23-004010/D005.R000
 Report Date: 04/24/2023
 ORELAP#: OR100028
 Purchase Order:
 Received: 04/06/23 15:53

Revision: 3 Document ID: 3120
 LegacyID: CFLC21WorksheetValidated 10/30/2020

Laboratory Pesticide Quality Control Results

AOAC2007.1 & EN 15662		Units: mg/Kg				Batch ID 2306597				
Matrix Spke/Matrix Spke Duplicate Recoveries	Result	MS Res	MSD Res	Spike	RFD%	Limit	MS% Re	MSD % Re	Limits	Notes
Abamectin	0.00	0.968	1.049	1.00	8.0%	< 30	96.8%	104.9%	50 - 150	
Acaphate	0.00	0.730	0.740	0.800	1.3%	< 30	91.3%	92.5%	50 - 150	
Acetaminophyl	0.00	2.682	3.218	4.000	18.1%	< 30	67.1%	80.4%	50 - 150	
Acetamprid	0.00	0.379	0.398	0.400	4.8%	< 30	94.7%	99.4%	50 - 150	
Aldicarb	0.00	0.759	0.864	0.800	12.9%	< 30	94.9%	108.0%	50 - 150	
Azoxystrobin	0.00	0.338	0.367	0.400	8.4%	< 30	84.0%	91.4%	50 - 150	
Bifenazate	0.106	0.491	0.560	0.400	16.9%	< 30	96.3%	113.6%	50 - 150	
Bifenthrin	0.00	0.214	0.251	0.400	16.0%	< 30	53.8%	62.8%	50 - 150	
Boscalid	0.746	1.234	1.400	0.800	29.0%	< 30	61.1%	81.9%	50 - 150	
Carbaryl	0.00	0.313	0.331	0.400	5.7%	< 30	78.2%	82.8%	50 - 150	
Carbofuran	0.00	0.350	0.380	0.400	8.0%	< 30	87.8%	94.9%	50 - 150	
Chlorantraniliprole	0.00	0.374	0.401	0.400	7.0%	< 30	93.8%	100.4%	50 - 150	
Chlorfenapyr	0.00	1.788	1.671	2.000	6.8%	< 30	89.4%	83.5%	50 - 150	
Chlorpyrifos	0.062	0.453	0.409	0.400	12.1%	< 30	97.9%	86.7%	50 - 150	
Clofentezane	0.011	0.225	0.265	0.400	17.0%	< 30	53.8%	63.8%	50 - 150	
Cyfluthrin	0.00	1.153	1.215	2.000	5.2%	< 30	57.8%	60.7%	30 - 150	
Cypermethrin	0.00	0.992	1.010	2.000	1.8%	< 30	49.8%	50.5%	50 - 150	Q
Daminozide	0.316	2.415	2.869	2.000	19.6%	< 30	104.9%	127.7%	30 - 150	
Diazinon	0.00	0.162	0.193	0.400	17.0%	< 30	40.4%	48.3%	50 - 150	Q
Dichlorvos	0.00	1.691	1.700	2.000	0.5%	< 30	84.8%	85.0%	50 - 150	
Dimethoate	0.00	0.355	0.366	0.400	3.0%	< 30	88.8%	91.9%	50 - 150	
Ethionphos	0.003	0.343	0.364	0.400	6.0%	< 30	85.1%	90.3%	50 - 150	
Etofenprox	0.036	0.500	0.560	0.800	12.2%	< 30	58.0%	65.5%	50 - 150	
Etoxazole	0.00	0.330	0.363	0.400	9.5%	< 30	82.4%	90.7%	50 - 150	
Fenoxycarb	0.00	0.305	0.377	0.400	21.1%	< 30	76.2%	94.1%	50 - 150	
Fenpyroximate	0.00	0.209	0.259	0.800	21.3%	< 30	26.1%	32.4%	50 - 150	Q
Fipronil	0.00	0.448	0.494	0.800	9.8%	< 30	56.0%	61.7%	50 - 150	
Fonicamid	0.00	0.923	0.955	1.000	3.4%	< 30	92.3%	95.5%	50 - 150	
Fludioxonil	0.00	1.308	1.184	0.800	10.0%	< 30	163.5%	148.0%	50 - 150	Q
Hexythiazox	0.00	0.814	0.904	1.000	10.8%	< 30	81.4%	90.4%	50 - 150	
Imazalil	0.00	0.356	0.399	0.400	11.4%	< 30	89.1%	99.9%	50 - 150	
Imidacloprid	0.00	0.718	0.744	0.800	3.6%	< 30	89.7%	93.0%	50 - 150	
Kiesoxim-methyl	0.00	0.561	0.663	0.800	16.7%	< 30	70.1%	82.9%	50 - 150	
Malathion	0.00	0.309	0.367	0.400	16.9%	< 30	77.4%	91.7%	50 - 150	
Metolaxyl	0.00	0.351	0.436	0.400	21.8%	< 30	87.9%	109.1%	50 - 150	
Methiocarb	0.00	0.322	0.387	0.400	18.1%	< 30	80.8%	96.7%	50 - 150	
Methomyl	0.00	0.771	0.856	0.800	10.3%	< 30	96.3%	106.8%	50 - 150	
MCK-264	0.00	0.196	0.242	0.400	21.2%	< 30	48.9%	60.5%	50 - 150	Q
Mydobutani	0.046	0.315	0.343	0.400	9.7%	< 30	67.4%	74.2%	50 - 150	
Naled	0.00	0.764	0.836	1.000	9.1%	< 30	76.4%	83.6%	50 - 150	
Oxamyl	0.00	1.904	1.986	2.000	4.2%	< 30	95.2%	99.3%	50 - 150	
Padobutrazole	0.003	0.659	0.751	0.800	13.1%	< 30	82.0%	93.5%	50 - 150	
Parathion-Methyl	0.00	0.257	0.358	0.400	32.8%	< 30	64.3%	89.5%	30 - 150	R
Permethrin	0.011	0.281	0.309	0.400	9.8%	< 30	67.7%	74.7%	50 - 150	
Phosmet	0.002	0.327	0.406	0.400	21.8%	< 30	81.4%	101.0%	50 - 150	
Piperonyl butoxide	0.00	1.911	2.179	2.000	13.1%	< 30	95.8%	109.0%	50 - 150	
Prallethrin	0.00	0.222	0.276	0.400	21.5%	< 30	55.8%	69.0%	50 - 150	
Propiconazole	0.099	0.655	0.788	0.800	21.1%	< 30	69.7%	86.1%	50 - 150	
Propoxur	0.007	0.353	0.373	0.400	5.8%	< 30	86.3%	91.5%	50 - 150	
Pyrethrin (Summe)	0.106	0.442	0.501	0.488	16.2%	< 30	68.8%	80.9%	50 - 150	
Pyridaben	0.012	0.266	0.287	0.400	7.6%	< 30	63.7%	68.7%	50 - 150	
Spinosad	0.00	0.303	0.336	0.388	10.3%	< 30	78.1%	86.6%	50 - 150	
Spiromesfen	0.00	0.347	0.371	0.400	6.6%	< 30	86.7%	92.7%	50 - 150	
Spirotetramat	0.00	0.462	0.504	0.400	8.6%	< 30	115.5%	125.9%	50 - 150	
Spiroxamine	0.00	0.731	0.901	0.800	20.8%	< 30	91.4%	112.7%	50 - 150	
Tebuconazole	0.00	0.629	0.760	0.800	18.9%	< 30	78.8%	95.1%	50 - 150	
Thiadoprid	0.00	0.355	0.404	0.400	12.8%	< 30	89.1%	101.1%	50 - 150	
Thiamethoxam	0.00	0.384	0.408	0.400	6.1%	< 30	95.9%	102.0%	50 - 150	
Trifloxystrobin	0.005	0.299	0.336	0.400	12.0%	< 30	73.9%	82.8%	50 - 150	



12423 NE Whitaker Way
Portland, OR 97230
503-254-1794



Report Number: 23-004010/D005.R000
Report Date: 04/24/2023
ORELAP#: OR100028
Purchase Order:
Received: 04/06/23 15:53





Explanation of QC Flag Comments:

Code	Explanation
Q	Matrix interferences affecting spike or surrogate recoveries.
Q1	Quality control result biased high. Only non-detect samples reported.
Q2	Quality control outside QC limits. Data considered estimate.
Q3	Sample concentration greater than four times the amount spiked.
Q4	Non-homogenous sample matrix, affecting RPD result and/or % recoveries.
Q5	Spike results above calibration curve.
Q6	Quality control outside QC limits. Data acceptable based on remaining QC.
R	Relative percent difference (RPD) outside control limit.
R1	RPD non-calculable, as sample or duplicate results are less than five times the LOQ.
R2	Sample replicates RPD non-calculable, as only one replicate is within the analytical range.
LOQ1	Quantitation level raised due to low sample volume and/or dilution.
LOQ2	Quantitation level raised due to matrix interference.
B	Analyte detected in method blank, but not in associated samples.
B1	The sample concentration is greater than 5 times the blank concentration.
B2	The sample concentration is less than 5 times the blank concentration.