

CONSOLIDATED TEST RESULTS SUMMARY

Please see the following pages for full test results.

| | | |
|--|---------------------------------------|---|
| BULK SKU | BATCH # | NR: Not Reported NA: Not Available LOQ: Limit Of Quantitation LOD: Limit Of Detection 1 g = 10 ⁻³ kg = 10 ³ mg = 10 ⁶ µg 1 mg/kg = 1 ppm = 1000 ppb |
| PRODUCT NAME | SERVING SIZE | |
| LABORATORY: COLUMBIA LABORATORIES | OREGON ACCREDITATION: OR100028 | |

| POTENCY | PER SERVING | PER GRAM | REGULATORY ACTION LEVEL |
|------------------------------------|-------------|----------|-------------------------|
| Cannabidiol (CBD) | mg/serving | mg/g | N/A |
| Total THC (d9-THC, THCA) | mg/serving | mg/g | 3 mg/g |
| Cannabigerol (CBG) | mg/serving | mg/g | N/A |
| Cannabinol (CBN) | mg/serving | mg/g | N/A |
| Cannabichromene (CBC) | mg/serving | mg/g | N/A |
| Tetrahydrocannabinolic Acid (THCA) | mg/serving | mg/g | N/A |
| Delta-9-THC (d9-THC) | mg/serving | mg/g | N/A |
| Delta-8-THC (d8-THC) | mg/serving | mg/g | N/A |

| HEAVY METALS | PER SERVING | PER GRAM | REGULATORY ACTION LEVEL |
|--------------|-------------|----------|---------------------------|
| Arsenic | µg/serving | µg/g | 10 µg/day ^[1] |
| Cadmium | µg/serving | µg/g | 4.1 µg/day ^[1] |
| Lead | µg/serving | µg/g | 3.5 µg/day ^[2] |
| Mercury | µg/serving | µg/g | 2 µg/day ^[1] |

| PESTICIDES | REGULATORY ACTION LEVEL |
|--|-------------------------|
| None of the 59 pesticides tested found above limit of detection in the sample. | 10 ppb ^[1] |

| RESIDUAL SOLVENTS |
|--|
| None of the 36 residual solvents tested found above limit of quantitation in the sample. |

| MICROBIAL | PASS/FAIL |
|--------------|-----------|
| Yeast & Mold | Pass |
| Coliform | Pass |

| TERPENES | % OF SAMPLE |
|-----------------|-------------|
| Farnesene | % |
| β-Caryophyllene | % |
| α-Bisabolol | % |

| TERPENES | % OF SAMPLE |
|---------------------|-------------|
| Guaiol | % |
| Humulene | % |
| Caryophyllene Oxide | % |

1. AMERICAN HERBAL PHARMACOPOEIA. (2014). CANNABIS INFLORESCENCE: STANDARDS OF IDENTITY, ANALYSIS, AND QUALITY CONTROL. WASHINGTON DC: AHP.

2. US FOOD AND DRUG ADMINISTRATION. (2019). LEAD IN FOOD, FOODWARES, AND DIETARY SUPPLEMENTS. WASHINGTON DC: FDA. US FOOD AND DRUG ADMINISTRATION. (2019). LEAD IN FOOD, FOODWARES, AND DIETARY SUPPLEMENTS. WASHINGTON DC: FDA.



12423 NE Whitaker Way
 Portland, OR 97230
 503-254-1794



Report Number: 21-009134/D002.R000
Report Date: 08/13/2021
ORELAP#: OR100028
Purchase Order:
Received: 08/09/21 16:00

Customer: Etz Hayim Holdings
Product identity: FORM-DG55-SG100
Client/Metric ID: .
Laboratory ID: 21-009134-0001

Sample Date: 07/20/21 13:55

Summary

Potency:

| Analyte per 1ml | Result | Limits | Units | Status | |
|---------------------------|--------|--------|--------|--------|--------------------------------------|
| CBC per 1ml [†] | 2.41 | | mg/1ml | | CBD-Total per 1ml 280 mg/1ml |
| CBD per 1ml | 280 | | mg/1ml | | |
| CBDV per 1ml [†] | 0.990 | | mg/1ml | | THC-Total per 1ml 2.84 mg/1ml |
| CBE per 1ml [†] | 1.57 | | mg/1ml | | |
| CBG per 1ml [†] | 1.73 | | mg/1ml | | |
| CBT per 1ml [†] | 4.20 | | mg/1ml | | |
| Δ9-THC per 1ml | 2.84 | | mg/1ml | | (Reported in milligrams per serving) |



12423 NE Whitaker Way
 Portland, OR 97230
 503-254-1794

Report Number: 21-009134/D002.R000
Report Date: 08/13/2021
ORELAP#: OR100028
Purchase Order:
Received: 08/09/21 16:00



Customer: Etz Hayim Holdings
 16427 NE Airport Way
 PORTLAND 97230
 United States of America (USA)

Product identity: FORM-DG55-SG100

Client/Metric ID: .

Sample Date: 07/20/21 13:55

Laboratory ID: 21-009134-0001

Evidence of Cooling: No

Temp: 26.3 °C

Relinquished by: T. Ashmore

Serving Size #1: 0.943 g

Density: 0.9430 g/ml

Sample Results

| Potency per 1ml | Method J AOAC 2015 V98-6 (mod)Units mg/se | Batch: 2107157 | Analyze: 8/11/21 2:19:00 AM | | |
|---------------------------------|---|----------------|-----------------------------|-------|-------|
| Analyte | Result | Limits | Units | LOQ | Notes |
| CBC per 1ml [†] | 2.41 | | mg/1ml | 0.813 | |
| CBC-A per 1ml [†] | < LOQ | | mg/1ml | 0.813 | |
| CBC-Total per 1ml [†] | 2.41 | | mg/1ml | 1.53 | |
| CBD per 1ml | 280 | | mg/1ml | 8.13 | |
| CBD-A per 1ml | < LOQ | | mg/1ml | 0.813 | |
| CBD-Total per 1ml | 280 | | mg/1ml | 8.84 | |
| CBDV per 1ml [†] | 0.990 | | mg/1ml | 0.813 | |
| CBDV-A per 1ml [†] | < LOQ | | mg/1ml | 0.813 | |
| CBDV-Total per 1ml [†] | < LOQ | | mg/1ml | 1.52 | |
| CBE per 1ml [†] | 1.57 | | mg/1ml | 0.813 | |
| CBG per 1ml [†] | 1.73 | | mg/1ml | 0.813 | |
| CBG-A per 1ml [†] | < LOQ | | mg/1ml | 0.813 | |
| CBG-Total per 1ml [†] | 1.73 | | mg/1ml | 1.52 | |
| CBL per 1ml [†] | < LOQ | | mg/1ml | 0.813 | |
| CBL-A per 1ml [†] | < LOQ | | mg/1ml | 0.813 | |
| CBL-Total per 1ml [†] | < LOQ | | mg/1ml | 1.53 | |
| CBN per 1ml | < LOQ | | mg/1ml | 0.813 | |
| CBT per 1ml [†] | 4.20 | | mg/1ml | 0.813 | |
| Δ8-THCV per 1ml [†] | < LOQ | | mg/1ml | 0.813 | |
| Δ8-THC per 1ml [†] | < LOQ | | mg/1ml | 0.813 | |
| Δ9-THC per 1ml | 2.84 | | mg/1ml | 0.813 | |
| exo-THC per 1ml [†] | < LOQ | | mg/1ml | 0.813 | |
| THC-A per 1ml | < LOQ | | mg/1ml | 0.813 | |
| THC-Total per 1ml | 2.84 | | mg/1ml | 1.53 | |
| THCV per 1ml [†] | < LOQ | | mg/1ml | 0.813 | |
| THCV-A per 1ml [†] | < LOQ | | mg/1ml | 0.813 | |
| THCV-Total per 1ml [†] | < LOQ | | mg/1ml | 1.53 | |
| Total Cannabinoids per 1ml | 294 | | mg/1ml | | |



12423 NE Whitaker Way
Portland, OR 97230
503-254-1794



Report Number: 21-009134/D004.R000
Report Date: 08/20/2021
ORELAP#: OR100028
Purchase Order:
Received: 08/09/21 16:00

Customer: Etz Hayim Holdings
Product identity: FORM-DG55-SG100
Client/Metric ID: .
Laboratory ID: 21-009134-0003

Sample Date: 07/20/21 13:55

Summary

Residual Solvents:

All analytes passing and less than LOQ.

Pesticides:

All analytes passing and less than LOQ.

Terpenes:

| Analyte | Percent by weight | Percent of Total | Analyte | Percent by weight | Percent of Total |
|-----------------------------------|-------------------|------------------|--------------------------------------|-------------------|------------------|
| (R)-(+)-Limonene [†] | 9.08 | 56.75% | β-Myrcene [†] | 4.72 | 29.50% |
| β-Caryophyllene [†] | 1.89 | 11.81% | Humulene [†] | 0.143 | 0.89% |
| α-Bisabolol [†] | 0.0476 | 0.30% | (-)-caryophyllene oxide [†] | 0.0461 | 0.29% |
| d-3-Carene [†] | 0.0353 | 0.22% | α-Terpinene [†] | 0.0204 | 0.13% |
| Total Terpenes[†] | 16.0 | 100.00% | | | |

Metals:

Less than LOQ for all analytes.



12423 NE Whitaker Way
 Portland, OR 97230
 503-254-1794

Report Number: 21-009134/D004.R000
Report Date: 08/20/2021
ORELAP#: OR100028
Purchase Order:
Received: 08/09/21 16:00



Customer: Etz Hayim Holdings
 16427 NE Airport Way
 PORTLAND 97230
 United States of America (USA)

Product identity: FORM-DG55-SG100

Client/Metric ID: .

Sample Date: 07/20/21 13:55

Laboratory ID: 21-009134-0003

Evidence of Cooling: No

Temp: 26.3 °C

Relinquished by: T. Ashmore

Sample Results

| Solvents | | Method Residual Solvents by GC/MS | | | | Units µg/g | Batch 2107096 | Analyze 08/13/21 03:12 PM | | | |
|--------------------|--------|-----------------------------------|------|--------|-------|-------------------------|---------------|---------------------------|------|--------|-------|
| Analyte | Result | Limits | LOQ | Status | Notes | Analyte | Result | Limits | LOQ | Status | Notes |
| 1,4-Dioxane | < LOQ | 380 | 100 | pass | | 2-Butanol | < LOQ | 5000 | 200 | pass | |
| 2-Ethoxyethanol | < LOQ | 160 | 30.0 | pass | | 2-Methylbutane | < LOQ | | 200 | | |
| 2-Methylpentane | < LOQ | | 30.0 | | | 2-Propanol (IPA) | < LOQ | 5000 | 200 | pass | |
| 2,2-Dimethylbutane | < LOQ | | 30.0 | | | 2,2-Dimethylpropane | < LOQ | | 200 | | |
| 2,3-Dimethylbutane | < LOQ | | 30.0 | | | 3-Methylpentane | < LOQ | | 30.0 | | |
| Acetone | < LOQ | 5000 | 200 | pass | | Acetonitrile | < LOQ | 410 | 100 | pass | |
| Benzene | < LOQ | 2.00 | 1.00 | pass | | Butanes (sum) | < LOQ | 5000 | 400 | pass | |
| Cyclohexane | < LOQ | 3880 | 200 | pass | | Ethyl acetate | < LOQ | 5000 | 200 | pass | |
| Ethyl benzene | < LOQ | | 200 | | | Ethyl ether | < LOQ | 5000 | 200 | pass | |
| Ethylene glycol | < LOQ | 620 | 200 | pass | | Ethylene oxide | < LOQ | 50.0 | 20.0 | pass | |
| Hexanes (sum) | < LOQ | 290 | 150 | pass | | Isopropyl acetate | < LOQ | 5000 | 200 | pass | |
| Isopropylbenzene | < LOQ | 70.0 | 30.0 | pass | | m,p-Xylene | < LOQ | | 200 | | |
| Methanol | < LOQ | 3000 | 200 | pass | | Methylene chloride | < LOQ | 600 | 60.0 | pass | |
| Methylpropane | < LOQ | | 200 | | | n-Butane | < LOQ | | 200 | | |
| n-Heptane | < LOQ | 5000 | 200 | pass | | n-Hexane | < LOQ | | 30.0 | | |
| n-Pentane | < LOQ | | 200 | | | o-Xylene | < LOQ | | 200 | | |
| Pentanes (sum) | < LOQ | 5000 | 600 | pass | | Propane | < LOQ | 5000 | 200 | pass | |
| Tetrahydrofuran | < LOQ | 720 | 100 | pass | | Toluene | < LOQ | 890 | 100 | pass | |
| Total Xylenes | < LOQ | | 400 | | | Total Xylenes and Ethyl | < LOQ | 2170 | 600 | pass | |



12423 NE Whitaker Way
 Portland, OR 97230
 503-254-1794

Report Number: 21-009134/D004.R000
Report Date: 08/20/2021
ORELAP#: OR100028
Purchase Order:
Received: 08/09/21 16:00



| Pesticides | | | | | | | | | | | |
|--|--------|--------|-------|--------|-------|---------------------|--------|--------|-------|--------|-------|
| Method AOAC 2007.01 & EN 15662 (mod) Units mg/kg Batch 2107154 Analyze 08/16/21 03:06 PM | | | | | | | | | | | |
| Analyte | Result | Limits | LOQ | Status | Notes | Analyte | Result | Limits | LOQ | Status | Notes |
| Abamectin | < LOQ | 0.50 | 0.250 | pass | | Acephate | < LOQ | 0.40 | 0.250 | pass | |
| Acequinocyl | < LOQ | 2.0 | 1.00 | pass | | Acetamiprid | < LOQ | 0.20 | 0.100 | pass | |
| Aldicarb | < LOQ | 0.40 | 0.200 | pass | | Azoxystrobin | < LOQ | 0.20 | 0.100 | pass | |
| Bifenazate | < LOQ | 0.20 | 0.100 | pass | | Bifenthrin | < LOQ | 0.20 | 0.100 | pass | |
| Boscalid | < LOQ | 0.40 | 0.200 | pass | | Carbaryl | < LOQ | 0.20 | 0.100 | pass | |
| Carbofuran | < LOQ | 0.20 | 0.100 | pass | | Chlorantraniliprole | < LOQ | 0.20 | 0.100 | pass | |
| Chlorfenapyr | < LOQ | 1.0 | 0.500 | pass | | Chlorpyrifos | < LOQ | 0.20 | 0.100 | pass | |
| Clofentezine | < LOQ | 0.20 | 0.100 | pass | | Cyfluthrin | < LOQ | 1.0 | 0.500 | pass | |
| Cypermethrin | < LOQ | 1.0 | 0.500 | pass | | Daminozide | < LOQ | 1.0 | 0.500 | pass | |
| Diazinon | < LOQ | 0.20 | 0.100 | pass | | Dichlorvos | < LOQ | 1.0 | 0.500 | pass | |
| Dimethoate | < LOQ | 0.20 | 0.100 | pass | | Ethoprophos | < LOQ | 0.20 | 0.100 | pass | |
| Etofenprox | < LOQ | 0.40 | 0.200 | pass | | Etoxazole | < LOQ | 0.20 | 0.100 | pass | |
| Fenoxycarb | < LOQ | 0.20 | 0.100 | pass | | Fenpyroximate | < LOQ | 0.40 | 0.200 | pass | |
| Fipronil | < LOQ | 0.40 | 0.200 | pass | | Fonicamid | < LOQ | 1.0 | 0.400 | pass | |
| Fludioxonil | < LOQ | 0.40 | 0.200 | pass | | Hexythiazox | < LOQ | 1.0 | 0.400 | pass | |
| Imazalil | < LOQ | 0.20 | 0.100 | pass | | Imidacloprid | < LOQ | 0.40 | 0.200 | pass | |
| Kresoxim-methyl | < LOQ | 0.40 | 0.200 | pass | | Malathion | < LOQ | 0.20 | 0.100 | pass | |
| Metalaxyl | < LOQ | 0.20 | 0.100 | pass | | Methiocarb | < LOQ | 0.20 | 0.100 | pass | |
| Methomyl | < LOQ | 0.40 | 0.200 | pass | | MGK-264 | < LOQ | 0.20 | 0.100 | pass | |
| Myclobutanil | < LOQ | 0.20 | 0.100 | pass | | Naled | < LOQ | 0.50 | 0.250 | pass | |
| Oxamyl | < LOQ | 1.0 | 0.500 | pass | | Paclobutrazole | < LOQ | 0.40 | 0.200 | pass | |
| Parathion-Methyl | < LOQ | 0.20 | 0.200 | pass | | Permethrin | < LOQ | 0.20 | 0.100 | pass | |
| Phosmet | < LOQ | 0.20 | 0.100 | pass | | Piperonyl butoxide | < LOQ | 2.0 | 1.00 | pass | |
| Prallethrin | < LOQ | 0.20 | 0.200 | pass | | Propiconazole | < LOQ | 0.40 | 0.200 | pass | |
| Propoxur | < LOQ | 0.20 | 0.100 | pass | | Pyrethrin I (total) | < LOQ | 1.0 | 0.500 | pass | |
| Pyridaben | < LOQ | 0.20 | 0.100 | pass | | Spinosad | < LOQ | 0.20 | 0.100 | pass | |
| Spiromesifen | < LOQ | 0.20 | 0.100 | pass | | Spirotetramat | < LOQ | 0.20 | 0.100 | pass | |
| Spiroxamine | < LOQ | 0.40 | 0.200 | pass | | Tebuconazole | < LOQ | 0.40 | 0.200 | pass | |
| Thiacloprid | < LOQ | 0.20 | 0.100 | pass | | Thiamethoxam | < LOQ | 0.20 | 0.100 | pass | |
| Trifloxystrobin | < LOQ | 0.20 | 0.100 | pass | | | | | | | |

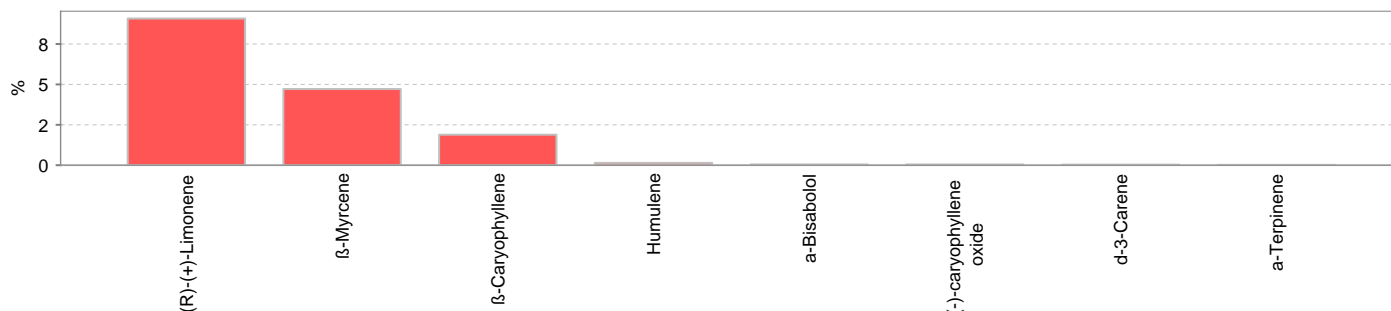


12423 NE Whitaker Way
Portland, OR 97230
503-254-1794

Report Number: 21-009134/D004.R000
Report Date: 08/20/2021
ORELAP#: OR100028
Purchase Order:
Received: 08/09/21 16:00



| Terpenes | | | | Method J AOAC 2015 V98-6 | Units % | Batch 2107426 | Analyze 08/19/21 12:34 AM | | |
|-------------------------------|-------------|-------|------------|--------------------------|--------------------------------------|---------------|---------------------------|------------|-------|
| Analyte | Result | LOQ | % of Total | Notes | Analyte | Result | LOQ | % of Total | Notes |
| (R)-(+)-Limonene [†] | 9.08 | 0.195 | 56.75% | | β-Myrcene [†] | 4.72 | 0.019 | 29.50% | |
| β-Caryophyllene [†] | 1.89 | 0.019 | 11.81% | | Humulene [†] | 0.143 | 0.019 | 0.89% | |
| α-Bisabolol [†] | 0.0476 | 0.019 | 0.30% | | (-)-caryophyllene oxide [†] | 0.0461 | 0.019 | 0.29% | |
| d-3-Carene [†] | 0.0353 | 0.019 | 0.22% | | α-Terpinene [†] | 0.0204 | 0.019 | 0.13% | |
| Geraniol [†] | < LOQ | 0.019 | 0.00% | | farnesene [†] | < LOQ | 0.019 | 0.00% | |
| Terpinolene [†] | < LOQ | 0.019 | 0.00% | | Sabinene [†] | < LOQ | 0.019 | 0.00% | |
| p-Cymene [†] | < LOQ | 0.019 | 0.00% | | (-)-Guaiol [†] | < LOQ | 0.019 | 0.00% | |
| Linalool [†] | < LOQ | 0.019 | 0.00% | | trans-β-Ocimene [†] | < LOQ | 0.013 | 0.00% | |
| (-)-α-Terpineol [†] | < LOQ | 0.019 | 0.00% | | (+)-Pulegone [†] | < LOQ | 0.019 | 0.00% | |
| Sabinene hydrate [†] | < LOQ | 0.019 | 0.00% | | (+)-Cedrol [†] | < LOQ | 0.019 | 0.00% | |
| (-)-β-Pinene [†] | < LOQ | 0.019 | 0.00% | | α-pinene [†] | < LOQ | 0.019 | 0.00% | |
| Menthol [†] | < LOQ | 0.019 | 0.00% | | (±)-trans-Nerolidol [†] | < LOQ | 0.019 | 0.00% | |
| (+)-Borneol [†] | < LOQ | 0.019 | 0.00% | | (±)-fenchone [†] | < LOQ | 0.019 | 0.00% | |
| (±)-Camphor [†] | < LOQ | 0.019 | 0.00% | | (-)-Isopulegol [†] | < LOQ | 0.019 | 0.00% | |
| (+)-fenchol [†] | < LOQ | 0.019 | 0.00% | | (±)-cis-Nerolidol [†] | < LOQ | 0.019 | 0.00% | |
| α-cedrene [†] | < LOQ | 0.019 | 0.00% | | α-phellandrene [†] | < LOQ | 0.019 | 0.00% | |
| Camphene [†] | < LOQ | 0.019 | 0.00% | | cis-β-Ocimene [†] | < LOQ | 0.006 | 0.00% | |
| Eucalyptol [†] | < LOQ | 0.019 | 0.00% | | γ-Terpinene [†] | < LOQ | 0.019 | 0.00% | |
| Geranyl acetate [†] | < LOQ | 0.019 | 0.00% | | Isoborneol [†] | < LOQ | 0.019 | 0.00% | |
| nerol [†] | < LOQ | 0.019 | 0.00% | | valencene [†] | < LOQ | 0.019 | 0.00% | |
| Total Terpenes | 16.0 | | | | | | | | |



| Metals | | | | | | | | | |
|---------|--------|--------|-------|--------|---------|----------|---------------------|--------|-------|
| Analyte | Result | Limits | Units | LOQ | Batch | Analyze | Method | Status | Notes |
| Arsenic | < LOQ | | mg/kg | 0.0489 | 2107448 | 08/19/21 | AOAC 2013.06 (mod.) | X | |
| Cadmium | < LOQ | | mg/kg | 0.0489 | 2107448 | 08/19/21 | AOAC 2013.06 (mod.) | X | |
| Lead | < LOQ | | mg/kg | 0.0489 | 2107448 | 08/19/21 | AOAC 2013.06 (mod.) | X | |
| Mercury | < LOQ | | mg/kg | 0.0245 | 2107448 | 08/19/21 | AOAC 2013.06 (mod.) | X | |