

CONSOLIDATED TEST RESULTS SUMMARY

Please see the following pages for full test results.

BULK SKU	BATCH #	LOQ: Limit Of Quantitation	
PRODUCT NAME	SERVING SIZE	LOD: Limit Of Detection	
LABORATORY :	OREGON ACCREDITATION: OR100028	1 g = 10 ⁻³ kg = 10 ³ mg = 10 ⁶ µg 1 mg/kg = 1 ppm = 1000 ppb	
POTENCY	PER SERVING	PER GRAM	Percent
Cannabidiol (CBD)	mg/serving	mg/g	%
Total THC (d9-THC, THCA)	mg/serving	mg/g	%
Cannabigerol (CBG)	mg/serving	mg/g	%
Cannabinol (CBN)	mg/serving	mg/g	%
Cannabichromene (CBC)	mg/serving	mg/g	%
Tetrahydrocannabinolic Acid (THCA)	mg/serving	mg/g	%
Delta-9-THC (d9-THC)	mg/serving	mg/g	%
Delta-8-THC (d8-THC)	mg/serving	mg/g	%
HEAVY METALS	PER SERVING	PER GRAM	REGULATORY ACTION LEVEL
Arsenic	µg/serving	µg/g	1.5 ppm
Cadmium	µg/serving	µg/g	0.5 ppm
Lead	µg/serving	µg/g	0.5 ppm
Mercury	µg/serving	µg/g	3.0 ppm
PESTICIDES	REGULATORY ACTION LEVEL		
None of the other 59 pesticides tested found above limit of detection in the sample.			10 ppb ^[1]
RESIDUAL SOLVENTS	Results	REGULATORY ACTION LEVEL	
Ethanol*	µg/g	5,000 ppm	
Heptane	µg/g	5,000 ppm	
None of the 34 residual solvents tested found above limit of quantitation in the sample.			
MICROBIAL	PASS/FAIL		
Yeast & Mold	Pass		
Coliform	Pass		
TERPENES	% OF SAMPLE		
Farnesene	%		
β-Caryophyllene	%		
α-Bisabolol	%		
Guaiol	%		
Humulene	%		
Caryophyllene Oxide	%		



1. American Herbal Pharmacopoeia. (2014). Cannabis Inflorescence: Standards of Identity, Analysis, and Quality Control. Washington DC: AHP.

*Ethanol is a food additive used in some of our ingredients. The FDA has labeled ethanol as Generally Recognized as Safe (GRAS). Many foods contain trace amounts of ethanol, including soy sauce, pasta sauces, fruits and juices, etc. Our products contain safe levels of ethanol and always below pertinent regulatory action levels.



12423 NE Whitaker Way
Portland, OR 97230
503-254-1794



Report Number: 23-012124/D004.R000
Report Date: 10/23/2023
ORELAP#: OR100028
Purchase Order: 2672577
Received: 10/11/23 16:29

Customer: Etz Hayim Holdings
Product identity: CYCL-SG200.V2-FJ17
Client/Metric ID: .
Laboratory ID: 23-012124-0001

Summary

Potency:

Analyte per 1g	Result	Limits	Units	Status	
CBC per 1g	5.75		mg/1g		CBD-Total per Serving Size 481 mg/1g
CBD per 1g	481		mg/1g		
CBDV per 1g	3.28		mg/1g		THC-Total per Serving Size 2.38 mg/1g
CBG per 1g	2.15		mg/1g		(Reported in milligrams per serving)
CBT per 1g	1.11		mg/1g		
Δ9-THC per 1g	2.38		mg/1g		

Residual Solvents:

All analytes passing and less than LOQ.

Pesticides:

All analytes passing and less than LOQ.

Terpenes:

Analyte	Percent by weight	Percent of Total	Analyte	Percent by weight	Percent of Total
(R)-(+)-Limonene	3.80	45.24%	a-pinene	3.48	41.43%
β-Caryophyllene	0.870	10.36%	Humulene	0.0729	0.87%
(-)-β-Pinene	0.0539	0.64%	β-Myrcene	0.0531	0.63%
Camphene	0.0443	0.53%	(-)-caryophyllene oxide	0.0240	0.29%
Total Terpenes	8.40	100.00%			

Metals:

Less than LOQ for all analytes.

Microbiology:

Less than LOQ for all analytes.



12423 NE Whitaker Way
 Portland, OR 97230
 503-254-1794



Report Number: 23-012124/D004.R000
Report Date: 10/23/2023
ORELAP#: OR100028
Purchase Order: 2672577
Received: 10/11/23 16:29

Customer: Etz Hayim Holdings
 16427 NE Airport Way
 PORTLAND 97230
 United States of America (USA)

Product identity: CYCL-SG200.V2-FJ17

Client/Metric ID: .

Sample Date:

Laboratory ID: 23-012124-0001

Evidence of Cooling: No

Temp: 22.3 °C

Relinquished by: client

Serving Size #1: 1 g

Sample Results

Potency per 1g	Method: J AOAC 2015 V98-6 (mod) ^b	Units mg/se	Batch: 2311872	Analyze: 10/14/23 12:58:00 A	
Analyte	Result	Limits	Units	LOQ	Notes
CBC per 1g	5.75		mg/1g	0.726	
CBC-A per 1g	< LOQ		mg/1g	0.726	
CBC-Total per 1g	5.75		mg/1g	1.36	
CBD per 1g	481		mg/1g	7.26	
CBD-A per 1g	< LOQ		mg/1g	0.726	
CBD-Total per 1g	481		mg/1g	7.90	
CBDV per 1g	3.28		mg/1g	0.726	
CBDV-A per 1g	< LOQ		mg/1g	0.726	
CBDV-Total per 1g	3.28		mg/1g	1.36	
CBE per 1g	< LOQ		mg/1g	0.726	
CBG per 1g	2.15		mg/1g	0.726	
CBG-A per 1g	< LOQ		mg/1g	0.726	
CBG-Total per 1g	2.15		mg/1g	1.36	
CBL per 1g	< LOQ		mg/1g	0.726	
CBL-A per 1g	< LOQ		mg/1g	0.726	
CBL-Total per 1g	< LOQ		mg/1g	1.36	
CBN per 1g	< LOQ		mg/1g	0.726	
CBT per 1g	1.11		mg/1g	0.726	
Δ8-THCV per 1g	< LOQ		mg/1g	0.726	
Δ10-THC-9R per 1g	< LOQ		mg/1g	0.726	
Δ10-THC-9S per 1g	< LOQ		mg/1g	0.726	
Δ10-THC-Total per 1g	< LOQ		mg/1g	1.45	
Δ8-THC per 1g	< LOQ		mg/1g	0.726	
Δ9-THC per 1g	2.38		mg/1g	0.726	
delta-9-THCP per 1g	< LOQ		mg/1g	0.726	
exo-THC per 1g	< LOQ		mg/1g	0.726	
THC-A per 1g	< LOQ		mg/1g	0.726	
THC-Total per 1g	2.38		mg/1g	1.36	
THCV per 1g	< LOQ		mg/1g	0.726	
THCV-A per 1g	< LOQ		mg/1g	0.726	



12423 NE Whitaker Way
Portland, OR 97230
503-254-1794



Report Number: 23-012124/D004.R000
Report Date: 10/23/2023
ORELAP#: OR100028
Purchase Order: 2672577
Received: 10/11/23 16:29

Potency per 1g	Method: J AOAC 2015 V98-6 (mod) ^P	Units mg/se	Batch: 2311872	Analyze: 10/14/23 12:58:00 A	
Analyte	Result	Limits	Units	LOQ	Notes
THCV-Total per 1g	< LOQ		mg/1g	1.36	
Total Cannabinoids per 1g	496		mg/1g		

Microbiology

Analyte	Result	Limits	Units	LOQ	Batch	Analyzed Method	Status	Notes
E.coli	< LOQ		cfu/g	10	2311897	10/19/23 AOAC 991.14 (Petrifilm) ^P		
Total Coliforms	< LOQ		cfu/g	10	2311897	10/19/23 AOAC 991.14 (Petrifilm) ^P		
Mold (RAPID Petrifilm)	< LOQ		cfu/g	10	2311898	10/19/23 AOAC 2014.05 (RAPID) ^P		
Yeast (RAPID Petrifilm)	< LOQ		cfu/g	10	2311898	10/19/23 AOAC 2014.05 (RAPID) ^P		

Solvents

Method: Residual Solvents by GC/MS ^P						Units µg/g	Batch 2312008	Analyze 10/19/23 01:44 PM			
Analyte	Result	Limits	LOQ	Status	Notes	Analyte	Result	Limits	LOQ	Status	Notes
1,4-Dioxane	< LOQ	380	100	pass		2-Butanol	< LOQ	5000	200	pass	
2-Ethoxyethanol	< LOQ	160	30.0	pass		2-Methylbutane (Isopentane)	< LOQ		200		
2-Methylpentane	< LOQ		30.0			2-Propanol (IPA)	< LOQ	5000	200	pass	
2,2-Dimethylbutane	< LOQ		30.0			2,2-Dimethylpropane (neo-pentane)	< LOQ		200		
2,3-Dimethylbutane	< LOQ		30.0			3-Methylpentane	< LOQ		30.0		
Acetone	< LOQ	5000	200	pass		Acetonitrile	< LOQ	410	100	pass	
Benzene	< LOQ	2.00	1.00	pass		Butanes (sum)	< LOQ	5000	400	pass	
Cyclohexane	< LOQ	3880	200	pass		Ethanol	< LOQ		200		
Ethyl acetate	< LOQ	5000	200	pass		Ethyl benzene	< LOQ		200		
Ethyl ether	< LOQ	5000	200	pass		Ethylene glycol	< LOQ	620	200	pass	
Ethylene oxide	< LOQ	50.0	20.0	pass		Hexanes (sum)	< LOQ	290	150	pass	
Isopropyl acetate	< LOQ	5000	200	pass		Isopropylbenzene (Cumene)	< LOQ	70.0	30.0	pass	
m,p-Xylene	< LOQ		200			Methanol	< LOQ	3000	200	pass	
Methylene chloride	< LOQ	600	60.0	pass		Methylpropane (Isobutane)	< LOQ		200		
n-Butane	< LOQ		200			n-Heptane	< LOQ	5000	200	pass	
n-Hexane	< LOQ		30.0			n-Pentane	< LOQ		200		
o-Xylene	< LOQ		200			Pentanes (sum)	< LOQ	5000	600	pass	
Propane	< LOQ	5000	200	pass		Tetrahydrofuran	< LOQ	720	100	pass	
Toluene	< LOQ	890	100	pass		Total Xylenes	< LOQ		400		
Total Xylenes and Ethyl benzene	< LOQ	2170	600	pass							



12423 NE Whitaker Way
Portland, OR 97230
503-254-1794

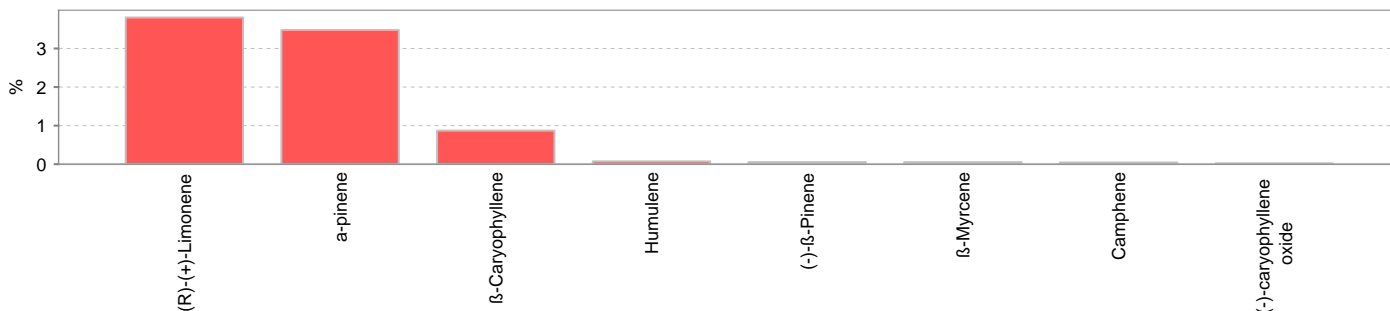


Report Number: 23-012124/D004.R000
Report Date: 10/23/2023
ORELAP#: OR100028
Purchase Order: 2672577
Received: 10/11/23 16:29

Pesticides											
Method: AOAC 2007.01 & EN 15662 (mod) ^b											
Units mg/kg Batch 2311920 Analyze 10/17/23 01:22 PM											
Analyte	Result	Limits	LOQ	Status	Notes	Analyte	Result	Limits	LOQ	Status	Notes
Abamectin [‡]	< LOQ	0.50	0.250	pass		Acephate [‡]	< LOQ	0.40	0.200	pass	
Acequinocyl [‡]	< LOQ	2.0	1.00	pass		Acetamiprid [‡]	< LOQ	0.20	0.100	pass	
Aldicarb [‡]	< LOQ	0.40	0.200	pass		Azoxystrobin [‡]	< LOQ	0.20	0.100	pass	
Bifentazate [‡]	< LOQ	0.20	0.100	pass		Bifenthrin [‡]	< LOQ	0.20	0.100	pass	
Boscalid [‡]	< LOQ	0.40	0.200	pass		Carbaryl [‡]	< LOQ	0.20	0.100	pass	
Carbofuran [‡]	< LOQ	0.20	0.100	pass		Chlorantraniliprole [‡]	< LOQ	0.20	0.100	pass	
Chlorfenapyr [‡]	< LOQ	1.0	0.500	pass		Chlorpyrifos [‡]	< LOQ	0.20	0.100	pass	
Clofentezine [‡]	< LOQ	0.20	0.100	pass		Cyfluthrin [‡]	< LOQ	1.0	0.500	pass	
Cypermethrin [‡]	< LOQ	1.0	0.500	pass		Daminozide [‡]	< LOQ	1.0	0.500	pass	
Diazinon [‡]	< LOQ	0.20	0.100	pass		Dichlorvos [‡]	< LOQ	1.0	0.500	pass	
Dimethoate [‡]	< LOQ	0.20	0.100	pass		Ethoprophos [‡]	< LOQ	0.20	0.100	pass	
Etofenprox [‡]	< LOQ	0.40	0.200	pass		Etoxazole [‡]	< LOQ	0.20	0.100	pass	
Fenoxycarb [‡]	< LOQ	0.20	0.100	pass		Fenpyroximate [‡]	< LOQ	0.40	0.200	pass	
Fipronil [‡]	< LOQ	0.40	0.200	pass		Fonicamid [‡]	< LOQ	1.0	0.400	pass	
Fludioxonil [‡]	< LOQ	0.40	0.200	pass		Hexythiazox [‡]	< LOQ	1.0	0.400	pass	
Imazalil [‡]	< LOQ	0.20	0.100	pass		Imidacloprid [‡]	< LOQ	0.40	0.200	pass	
Kresoxim-methyl [‡]	< LOQ	0.40	0.200	pass		Malathion [‡]	< LOQ	0.20	0.100	pass	
Metalaxyl [‡]	< LOQ	0.20	0.100	pass		Methiocarb [‡]	< LOQ	0.20	0.100	pass	
Methomyl [‡]	< LOQ	0.40	0.200	pass		MGK-264 [‡]	< LOQ	0.20	0.100	pass	
Myclobutanil [‡]	< LOQ	0.20	0.100	pass		Naled [‡]	< LOQ	0.50	0.250	pass	
Oxamyl [‡]	< LOQ	1.0	0.500	pass		Paclotubrazole [‡]	< LOQ	0.40	0.200	pass	
Parathion-Methyl [‡]	< LOQ	0.20	0.100	pass		Permethrin [‡]	< LOQ	0.20	0.100	pass	
Phosmet [‡]	< LOQ	0.20	0.100	pass		Piperonyl butoxide [‡]	< LOQ	2.0	1.00	pass	
Prallethrin [‡]	< LOQ	0.20	0.100	pass		Propiconazole [‡]	< LOQ	0.40	0.200	pass	
Propoxur [‡]	< LOQ	0.20	0.100	pass		Pyrethrin I (total) [‡]	< LOQ	1.0	0.500	pass	
Pyridaben [‡]	< LOQ	0.20	0.100	pass		Spinosad [‡]	< LOQ	0.20	0.100	pass	
Spiromesifen [‡]	< LOQ	0.20	0.100	pass		Spirotetramat [‡]	< LOQ	0.20	0.100	pass	
Spiroxamine [‡]	< LOQ	0.40	0.200	pass		Tebuconazole [‡]	< LOQ	0.40	0.200	pass	
Thiacloprid [‡]	< LOQ	0.20	0.100	pass		Thiamethoxam [‡]	< LOQ	0.20	0.100	pass	
Trifloxystrobin [‡]	< LOQ	0.20	0.100	pass							



Terpenes				Method: J AOAC 2015 V98-6	Units %	Batch 2311945	Analyze 10/17/23 06:27 PM		
Analyte	Result	LOQ	% of Total	Notes	Analyte	Result	LOQ	% of Total	Notes
(R)-(+)-Limonene	3.80	0.019	45.24%		a-pinene	3.48	0.019	41.43%	
β-Caryophyllene	0.870	0.019	10.357%		Humulene	0.0729	0.019	0.8679%	
(-)-β-Pinene	0.0539	0.019	0.6417%		β-Myrcene	0.0531	0.019	0.6321%	
Camphene	0.0443	0.019	0.5274%		(-)-caryophyllene oxide	0.0240	0.019	0.2857%	
Linalool	< LOQ	0.019	0.00%		a-Bisabolol	< LOQ	0.019	0.00%	
farnesene	< LOQ	0.019	0.00%		Geranyl acetate	< LOQ	0.019	0.00%	
(-)-Guaiol	< LOQ	0.019	0.00%		Sabinene	< LOQ	0.019	0.00%	
Geraniol	< LOQ	0.019	0.00%		nerol	< LOQ	0.019	0.00%	
(+)-Cedrol	< LOQ	0.019	0.00%		(+)-Pulegone	< LOQ	0.019	0.00%	
(+)-fenchol	< LOQ	0.019	0.00%		(±)-trans-Nerolidol	< LOQ	0.019	0.00%	
(±)-Camphor	< LOQ	0.019	0.00%		a-Terpinene	< LOQ	0.019	0.00%	
(±)-cis-Nerolidol	< LOQ	0.019	0.00%		(-)-Isopulegol	< LOQ	0.019	0.00%	
Sabinene hydrate	< LOQ	0.019	0.00%		a-phellandrene	< LOQ	0.019	0.00%	
Isoborneol	< LOQ	0.019	0.00%		Menthol	< LOQ	0.019	0.00%	
valencene	< LOQ	0.019	0.00%		gamma-Terpinene	< LOQ	0.019	0.00%	
(-)-a-Terpineol	< LOQ	0.019	0.00%		(+)-Borneol	< LOQ	0.019	0.00%	
d-3-Carene	< LOQ	0.019	0.00%		(±)-fenchone	< LOQ	0.019	0.00%	
a-cedrene	< LOQ	0.019	0.00%		cis-β-Ocimene	< LOQ	0.006	0.00%	
Eucalyptol	< LOQ	0.019	0.00%		p-Cymene	< LOQ	0.019	0.00%	
Terpinolene	< LOQ	0.019	0.00%		trans-β-Ocimene	< LOQ	0.013	0.00%	
Total Terpenes	8.40								



Metals									
Analyte	Result	Limits	Units	LOQ	Batch	Analyzed Method	Status	Notes	
Arsenic [‡]	< LOQ	0.200	mg/kg	0.0859	2311932	10/17/23 AOAC 2013.06 (mod.) ^p	pass		
Cadmium [‡]	< LOQ	0.200	mg/kg	0.0859	2311932	10/17/23 AOAC 2013.06 (mod.) ^p	pass		
Lead [‡]	< LOQ	0.500	mg/kg	0.0859	2311932	10/17/23 AOAC 2013.06 (mod.) ^p	pass		
Mercury [‡]	< LOQ	0.100	mg/kg	0.0430	2311932	10/17/23 AOAC 2013.06 (mod.) ^p	pass		



12423 NE Whitaker Way
Portland, OR 97230
503-254-1794



Report Number: 23-012124/D004.R000
Report Date: 10/23/2023
ORELAP#: OR100028
Purchase Order: 2672577
Received: 10/11/23 16:29

Abbreviations

Limits: Action Levels per OAR-333-007-0400, OAR-333-007-0210, OAR-333-007-0220, CCR title 16-division 42. BCC-section 5723

Limit(s) of Quantitation (LOQ): The minimum levels, concentrations, or quantities of a target variable (e.g., target analyte) that can be reported with a specified degree of confidence.

Ⓟ = ISO/IEC 17025:2017 accredited method.

Ⓜ = TNI accredited analyte.

Units of Measure

cfu/g = Colony forming units per gram

g = g

µg/g = Microgram per gram

mg/kg = Milligram per kilogram = parts per million (ppm)

mg/1g = Milligram per 1g

% = Percentage of sample

% wt = µg/g divided by 10,000

Approved Signatory

Derrick Tanner
General Manager



12423 NE Whitaker Way
 Portland, OR 97230
 503-254-1794



Report Number: 23-012124/D004.R000
Report Date: 10/23/2023
ORELAP#: OR100028
Purchase Order: 2672577
Received: 10/11/23 16:29

Revision: 4 Document ID: 7148
 Legacy ID: Worksheet Validated 04/20/2021

Laboratory Quality Control Results

JAOAC2015 V986 Batch ID: 2311872

Laboratory Control Sample									
Analyte	LCS	Result	Spike	Units	% Rec	Limits		Evaluation	Notes
CBDVA	2	0.0747	0.0768	%	97.3	80.0	- 120	Acceptable	
CBDV	2	0.0740	0.0748	%	99.0	80.0	- 120	Acceptable	
CBE	2	0.0796	0.0818	%	97.3	80.0	- 120	Acceptable	
CBDA	1	0.0739	0.0744	%	99.4	90.0	- 110	Acceptable	
CBGA	1	0.0759	0.0760	%	99.8	80.0	- 120	Acceptable	
CBG	1	0.0845	0.0848	%	99.7	80.0	- 120	Acceptable	
CBD	1	0.0733	0.0723	%	101	90.0	- 110	Acceptable	
THCV	2	0.0672	0.0702	%	95.7	80.0	- 120	Acceptable	
d8THCV	2	0.0667	0.0704	%	94.6	80.0	- 120	Acceptable	
THCVA	2	0.0731	0.0754	%	96.9	80.0	- 120	Acceptable	
CBN	1	0.0738	0.0758	%	97.4	80.0	- 120	Acceptable	
exo-THC	2	0.0699	0.0754	%	92.8	80.0	- 120	Acceptable	
d9THC	1	0.0821	0.0842	%	97.5	90.0	- 110	Acceptable	
d8THC	1	0.0743	0.0784	%	94.7	90.0	- 110	Acceptable	
9S-d10THC	1	0.0750	0.0778	%	96.5	80.0	- 120	Acceptable	
CBL	2	0.0758	0.0779	%	97.3	80.0	- 120	Acceptable	
9R-d10THC	1	0.0739	0.0776	%	95.2	80.0	- 120	Acceptable	
CBC	2	0.0724	0.0781	%	92.8	80.0	- 120	Acceptable	
THCA	1	0.0727	0.0777	%	93.6	90.0	- 110	Acceptable	
CBCA	2	0.0748	0.0769	%	97.3	80.0	- 120	Acceptable	
CBLA	2	0.0784	0.0804	%	97.4	80.0	- 120	Acceptable	
d9THCP	2	0.0729	0.0768	%	94.9	80.0	- 120	Acceptable	
CBT	2	0.0639	0.0743	%	85.9	80.0	- 120	Acceptable	

Method Blank							
Analyte	Result	LOQ	Units	Limits		Evaluation	Notes
CBDVA	<LOQ	0.0728	%	< 0.0728		Acceptable	
CBDV	<LOQ	0.0728	%	< 0.0728		Acceptable	
CBE	<LOQ	0.0728	%	< 0.0728		Acceptable	
CBDA	<LOQ	0.0728	%	< 0.0728		Acceptable	
CBGA	<LOQ	0.0728	%	< 0.0728		Acceptable	
CBG	<LOQ	0.0728	%	< 0.0728		Acceptable	
CBD	<LOQ	0.0728	%	< 0.0728		Acceptable	
THCV	<LOQ	0.0728	%	< 0.0728		Acceptable	
d8THCV	<LOQ	0.0728	%	< 0.0728		Acceptable	
THCVA	<LOQ	0.0728	%	< 0.0728		Acceptable	
CBN	<LOQ	0.0728	%	< 0.0728		Acceptable	
exo-THC	<LOQ	0.0728	%	< 0.0728		Acceptable	
d9THC	<LOQ	0.0728	%	< 0.0728		Acceptable	
d8THC	<LOQ	0.0728	%	< 0.0728		Acceptable	
9S-d10THC	<LOQ	0.0728	%	< 0.0728		Acceptable	
CBL	<LOQ	0.0728	%	< 0.0728		Acceptable	
9R-d10THC	<LOQ	0.0728	%	< 0.0728		Acceptable	
CBC	<LOQ	0.0728	%	< 0.0728		Acceptable	
THCA	<LOQ	0.0728	%	< 0.0728		Acceptable	
CBCA	<LOQ	0.0728	%	< 0.0728		Acceptable	
CBLA	<LOQ	0.0728	%	< 0.0728		Acceptable	
d9THCP	<LOQ	0.0728	%	< 0.0728		Acceptable	
CBT	<LOQ	0.0728	%	< 0.0728		Acceptable	

Abbreviations
 ND - None Detected at or above MRL
 RPD - Relative Percent Difference
 LOQ - Limit of Quantitation

Units of Measure:
 % - Percent



12423 NE Whitaker Way
Portland, OR 97230
503-254-1794



Report Number: 23-012124/D004.R000
Report Date: 10/23/2023
ORELAP#: OR100028
Purchase Order: 2672577
Received: 10/11/23 16:29

Revision: 4 Document ID: 7148
Legacy ID: Worksheet Validated 04/20/2021

Laboratory Quality Control Results

JAOAC2015 V986		Batch ID: 2311872						
Sample Duplicate		Sample ID: 23-0120970001						
Analyte	Result	Org. Result	LOQ	Units	RPD	Limits	Evaluation	Notes
CBDVA	<LOQ	<LOQ	0.0753	%	NA	< 20	Acceptable	
CBDV	0.255	0.254	0.0753	%	0.318	< 20	Acceptable	
CBE	1.79	1.77	0.0753	%	1.15	< 20	Acceptable	
CBDA	0.140	0.137	0.0753	%	2.30	< 20	Acceptable	
CBGA	<LOQ	<LOQ	0.0753	%	NA	< 20	Acceptable	
CBG	1.42	1.41	0.0753	%	0.872	< 20	Acceptable	
CBD	51.9	49.5	0.0753	%	4.55	< 20	Acceptable	
THCV	<LOQ	<LOQ	0.0753	%	NA	< 20	Acceptable	
d8THCV	<LOQ	<LOQ	0.0753	%	NA	< 20	Acceptable	
THCVA	<LOQ	<LOQ	0.0753	%	NA	< 20	Acceptable	
CBN	0.234	0.222	0.0753	%	5.24	< 20	Acceptable	
exo-THC	<LOQ	<LOQ	0.0753	%	NA	< 20	Acceptable	
d9THC	1.83	1.83	0.0753	%	0.404	< 20	Acceptable	
d8THC	<LOQ	<LOQ	0.0753	%	NA	< 20	Acceptable	
9S-d10THC	<LOQ	<LOQ	0.0753	%	NA	< 20	Acceptable	
CBL	<LOQ	<LOQ	0.0753	%	NA	< 20	Acceptable	
9R-d10THC	<LOQ	<LOQ	0.0753	%	NA	< 20	Acceptable	
CBC	2.96	2.93	0.0753	%	1.07	< 20	Acceptable	
THCA	<LOQ	<LOQ	0.0753	%	NA	< 20	Acceptable	
CBCA	<LOQ	<LOQ	0.0753	%	NA	< 20	Acceptable	
CBLA	<LOQ	<LOQ	0.0753	%	NA	< 20	Acceptable	
d9THCP	<LOQ	<LOQ	0.0753	%	NA	< 20	Acceptable	
CBT	0.232	0.218	0.0753	%	6.54	< 20	Acceptable	

Abbreviations

ND - None Detected at or above MRL
RPD - Relative Percent Difference
LOQ - Limit of Quantitation

Units of Measure:

% - Percent



12423 NE Whitaker Way
 Portland, OR 97230
 503-254-1794



Report Number: 23-012124/D004.R000
Report Date: 10/23/2023
ORELAP#: OR100028
Purchase Order: 2672577
Received: 10/11/23 16:29

Revision: 3 Document ID: 3120
 LegacyID: CFLC21WorksheetValidated 10/30/2020

Laboratory Pesticide Quality Control Results

AOAC2007.1 &EN 15662		Units: mg/Kg			Batch ID 2311920			
Method Blank	Blank Result	Blank Limits	Notes	LCS Result	LCS Spk	LCS % Re	Limits	Notes
Abamectin	0.00	< 0.250		0.824	1.000	82.4	50.0	150
Acaphate	0.032	< 0.200		0.689	0.800	86.1	60.0	120
Acetamiprid	0.00	< 0.100		0.365	0.400	91.2	60.0	120
Aldicarb	0.00	< 0.200		0.742	0.800	92.7	60.0	120
Azoxystrobin	0.002	< 0.100		0.354	0.400	88.5	60.0	120
Bifenazate	0.00	< 0.100		0.369	0.400	92.2	60.0	120
Bifenthrin	0.00	< 0.100		0.324	0.400	81.1	50.0	150
Boscalid	0.00	< 0.200		0.650	0.800	81.3	60.0	120
Carbaryl	0.00	< 0.100		0.348	0.400	86.9	60.0	120
Carbendazim	0.00	< 0.100		0.369	0.400	92.2	60.0	120
Chlorantraniliprole	0.00	< 0.100		0.360	0.400	89.9	60.0	120
Chlorfenapyr	0.00	< 0.500		1.930	2.000	96.5	60.0	120
Chlorpyrifos	0.00	< 0.100		0.378	0.400	94.4	60.0	120
Clofentezine	0.003	< 0.100		0.359	0.400	89.7	60.0	120
Cyfluthrin	0.00	< 0.500		1.434	2.000	71.7	50.0	150
Cypermethrin	0.00	< 0.500		1.736	2.000	86.8	50.0	150
Daminozide	0.00	< 0.500		1.756	2.000	87.8	60.0	120
Diazinon	0.00	< 0.100		0.355	0.400	88.7	60.0	120
Dichlorvos	0.00	< 0.500		1.835	2.000	91.8	60.0	120
Dimethoate	0.001	< 0.100		0.351	0.400	87.8	60.0	120
Ethionphos	0.00	< 0.100		0.356	0.400	88.9	60.0	120
Etofenprox	0.017	< 0.200		0.682	0.800	85.3	50.0	150
Etoxazole	0.00	< 0.100		0.372	0.400	93.0	60.0	120
Fenoxycarb	0.00	< 0.100		0.355	0.400	88.7	60.0	120
Fenprophthate	0.00	< 0.200		0.700	0.800	87.5	60.0	120
Fipronil	0.00	< 0.200		0.670	0.800	83.8	60.0	120
Fonicamid	0.00	< 0.250		0.842	1.000	84.2	60.0	120
Fludioxonil	0.00	< 0.200		0.708	0.800	88.5	50.0	150
Hexythiazox	0.00	< 0.250		0.906	1.000	90.6	60.0	120
Imazalil	0.00	< 0.100		0.394	0.400	98.6	60.0	120
Imidacloprid	0.00	< 0.200		0.674	0.800	84.3	60.0	120
Kiesoxim-methyl	0.00	< 0.200		0.728	0.800	91.1	60.0	120
Malathion	0.00	< 0.100		0.355	0.400	89.0	60.0	120
Metaxyl	0.00	< 0.100		0.365	0.400	91.3	60.0	120
Methiocarb	0.001	< 0.100		0.340	0.400	85.1	60.0	120
Methomyl	0.00	< 0.200		0.749	0.800	93.6	60.0	120
MCK-264	0.00	< 0.100		0.318	0.400	79.4	50.0	150
Mydobutanol	0.00	< 0.100		0.356	0.400	88.9	60.0	120
Naled	0.00	< 0.250		0.882	1.000	88.2	50.0	150
Oxaryl	0.00	< 0.500		1.816	2.000	90.8	60.0	120
Padobutrazole	0.00	< 0.200		0.703	0.800	87.9	60.0	120
Parathion-Methyl	0.00	< 0.100		0.314	0.400	78.6	50.0	150
Permethrin	0.00	< 0.100		0.342	0.400	85.5	50.0	150
Phosmet	0.00	< 0.100		0.360	0.400	90.1	50.0	150
Piperonyl butoxide	0.00	< 0.500		1.707	2.000	85.3	60.0	120
Prallethrin	0.00	< 0.100		0.419	0.400	104.7	60.0	120
Propiconazole	0.00	< 0.200		0.688	0.800	86.1	60.0	120
Propoxur	0.00	< 0.100		0.347	0.400	86.8	60.0	120
Pyrethrin (Summe)	0.005	< 0.100		0.432	0.488	88.6	60.0	120
Pyridaben	0.00	< 0.100		0.352	0.400	88.0	50.0	150
Spinosad	0.00	< 0.100		0.376	0.388	96.8	50.0	150
Spiromesfen	0.00	< 0.100		0.382	0.400	95.5	60.0	120
Spirotetramat	0.00	< 0.100		0.355	0.400	88.6	60.0	120
Spiroxamine	0.00	< 0.200		0.702	0.800	87.8	60.0	120
Tebuconazole	0.00	< 0.200		0.680	0.800	85.1	60.0	120
Thiadoprid	0.00	< 0.100		0.359	0.400	89.8	60.0	120
Thiamethoxam	0.00	< 0.100		0.334	0.400	83.6	60.0	120
Trifloxystrobin	0.00	< 0.100		0.366	0.400	91.6	60.0	120



12423 NE Whitaker Way
Portland, OR 97230
503-254-1794



Report Number: 23-012124/D004.R000
Report Date: 10/23/2023
ORELAP#: OR100028
Purchase Order: 2672577
Received: 10/11/23 16:29

Revision: 3 Document ID: 3120
LegacyID: CFLC21WorksheetValidated 10/30/2020

Laboratory Pesticide Quality Control Results

AOAC2007.1 & EN 15662		Units: mg/Kg				Batch ID 2311920				
Matrix Spke/Matrix Spke Duplicate Recoveries	Result	MS Res	MSD Res	Spike	RPD%	Limit	MS% Re	MSD % Re	Limits	Notes
Abamectin	0.000	0.513	0.459	1.000	11.1%	< 30	51.3%	45.9%	50 - 150	Q
Acephate	0.162	0.840	0.850	0.800	1.4%	< 30	84.8%	85.9%	50 - 150	
Acetaminophen	0.000	1.395	1.204	4.000	14.7%	< 30	34.9%	30.1%	50 - 150	
Acetamiprid	0.001	0.340	0.304	0.400	11.0%	< 30	84.7%	75.9%	50 - 150	
Aldicarb	0.000	0.729	0.675	0.800	7.7%	< 30	91.1%	84.4%	50 - 150	
Azoxystrobin	0.012	0.293	0.269	0.400	9.1%	< 30	70.3%	64.2%	50 - 150	
Bifenazate	0.016	0.284	0.219	0.400	27.0%	< 30	67.0%	50.8%	50 - 150	
Bifenthrin	0.035	0.095	0.093	0.400	4.2%	< 30	15.2%	14.9%	50 - 150	Q
Boscalid	0.497	1.051	1.068	0.800	3.0%	< 30	69.3%	71.4%	50 - 150	
Carbaryl	0.000	0.249	0.213	0.400	15.7%	< 30	62.3%	53.3%	50 - 150	
Carbofuran	0.001	0.241	0.210	0.400	13.9%	< 30	59.9%	52.2%	50 - 150	
Chlorantraniliprole	0.000	0.215	0.176	0.400	19.8%	< 30	53.8%	44.1%	50 - 150	Q
Chlorfenapyr	0.000	1.383	1.027	2.000	29.0%	< 30	69.2%	51.4%	50 - 150	
Chlorpyrifos	0.000	0.242	0.216	0.400	11.1%	< 30	60.4%	54.1%	50 - 150	
Clofentezine	0.000	0.221	0.176	0.400	22.0%	< 30	55.2%	44.0%	50 - 150	Q
Cyfluthrin	0.000	0.631	0.735	2.000	15.1%	< 30	31.8%	36.7%	30 - 150	
Cypermethrin	0.000	0.876	0.824	2.000	6.1%	< 30	43.8%	41.2%	50 - 150	Q
Daminozide	0.000	0.928	0.829	2.000	11.3%	< 30	46.4%	41.4%	30 - 150	
Diazinon	0.000	0.260	0.232	0.400	11.1%	< 30	64.9%	58.1%	50 - 150	
Dichlorvos	0.098	1.659	1.507	2.000	10.2%	< 30	78.0%	70.4%	50 - 150	
Dimethoate	0.000	0.337	0.308	0.400	9.0%	< 30	84.2%	76.9%	50 - 150	
Ethionphos	0.000	0.283	0.235	0.400	18.9%	< 30	70.7%	58.7%	50 - 150	
Etofenprox	0.000	0.299	0.235	0.800	23.4%	< 30	37.4%	29.9%	50 - 150	Q
Etoxazole	0.000	0.226	0.209	0.400	8.0%	< 30	56.9%	52.2%	50 - 150	
Fenoxycarb	0.000	0.235	0.213	0.400	9.7%	< 30	58.8%	53.4%	50 - 150	
Fenpyroximate	0.008	0.399	0.346	0.800	14.7%	< 30	48.8%	42.2%	50 - 150	Q
Fipronil	0.000	0.213	0.175	0.800	19.7%	< 30	26.7%	21.9%	50 - 150	Q
Fonicamid	0.000	0.796	0.721	1.000	9.9%	< 30	79.0%	72.1%	50 - 150	
Fludioxonil	0.001	1.034	1.032	0.800	0.3%	< 30	129.1%	128.8%	50 - 150	
Hexythiazox	0.000	0.115	0.095	1.000	19.1%	< 30	11.9%	9.5%	50 - 150	Q
Imazalil	0.002	0.322	0.308	0.400	4.7%	< 30	80.0%	76.3%	50 - 150	
Imidacloprid	0.000	0.625	0.573	0.800	8.7%	< 30	78.1%	71.0%	50 - 150	
Kiesoxim-methyl	0.000	0.474	0.390	0.800	19.3%	< 30	59.2%	48.0%	50 - 150	Q
Malathion	0.071	0.365	0.351	0.400	4.7%	< 30	73.0%	70.2%	50 - 150	
Metaxyl	0.010	0.304	0.280	0.400	8.3%	< 30	73.4%	67.0%	50 - 150	
Methiocarb	0.005	0.275	0.273	0.400	0.7%	< 30	67.9%	67.0%	50 - 150	
Methomyl	0.000	0.626	0.740	0.800	16.8%	< 30	78.2%	92.6%	50 - 150	
MCK-264	0.000	0.242	0.195	0.400	21.2%	< 30	60.4%	48.8%	50 - 150	Q
Mydobutani	0.025	0.316	0.282	0.400	12.1%	< 30	72.0%	64.3%	50 - 150	
Naled	0.000	0.580	0.434	1.000	28.7%	< 30	58.0%	43.4%	50 - 150	Q
Oxaryl	0.000	1.907	1.730	2.000	9.7%	< 30	95.4%	86.9%	50 - 150	
Padobutrazole	0.000	0.447	0.390	0.800	13.7%	< 30	55.9%	48.7%	50 - 150	Q
Parathion-Methyl	0.000	0.226	0.187	0.400	18.0%	< 30	56.4%	46.7%	30 - 150	
Permethrin	0.000	0.179	0.156	0.400	13.7%	< 30	44.0%	38.9%	50 - 150	Q
Phosmet	0.000	0.253	0.224	0.400	11.0%	< 30	63.1%	56.1%	50 - 150	
Piperonyl butoxide	0.000	1.170	1.051	2.000	10.7%	< 30	58.9%	52.0%	50 - 150	
Prallethrin	0.002	0.134	0.131	0.400	2.4%	< 30	33.0%	32.2%	50 - 150	Q
Propiconazole	0.000	0.357	0.313	0.800	13.4%	< 30	44.7%	39.1%	50 - 150	Q
Propoxur	0.002	0.293	0.264	0.400	10.3%	< 30	72.7%	65.0%	50 - 150	Q
Pyrethrin (Summe)	0.023	0.234	0.240	0.400	2.6%	< 30	43.2%	44.3%	50 - 150	Q
Pyridaben	0.000	0.175	0.144	0.400	19.7%	< 30	43.0%	36.0%	50 - 150	Q
Spinosad	0.000	0.288	0.250	0.388	13.8%	< 30	74.1%	64.5%	50 - 150	
Spiromesfen	0.000	0.218	0.186	0.400	15.8%	< 30	54.9%	46.9%	50 - 150	Q
Spirotetramat	0.000	0.324	0.290	0.400	11.1%	< 30	81.0%	72.4%	50 - 150	
Spiroxamine	0.010	0.656	0.605	0.800	8.2%	< 30	80.8%	74.4%	50 - 150	
Tebuconazole	0.000	0.305	0.264	0.800	14.0%	< 30	38.2%	33.0%	50 - 150	Q
Thiadoprid	0.000	0.343	0.308	0.400	10.0%	< 30	85.7%	77.0%	50 - 150	
Thiamethoxam	0.000	0.329	0.323	0.400	1.6%	< 30	82.2%	80.9%	50 - 150	
Trifloxystrobin	0.023	0.268	0.236	0.400	13.9%	< 30	61.9%	53.4%	50 - 150	



12423 NE Whitaker Way
 Portland, OR 97230
 503-254-1794



Report Number: 23-012124/D004.R000
Report Date: 10/23/2023
ORELAP#: OR100028
Purchase Order: 2672577
Received: 10/11/23 16:29

Revision: 1 Document ID: 7086
 Legacy ID: CFL-E57Worksheet Validated 11/04/2020

Terpenes Quality Control Results

Method Reference: EPA5035				Batch ID: 2311945					
Method Blank				Laboratory Control Sample					
Analyte	Result	LOQ	Notes	Result	LCS	Units	LCS% Rec	Limits	Notes
a-pinene	<LOQ	< 200		451	500	µg/g	90%	70 - 130	
Camphene	<LOQ	< 200		451	500	µg/g	90%	70 - 130	
Sabinene	<LOQ	< 200		451	500	µg/g	90%	70 - 130	
b-Pinene	<LOQ	< 200		451	500	µg/g	90%	70 - 130	
b-Myrcene	<LOQ	< 200		448	500	µg/g	90%	70 - 130	
a-phellandrene	<LOQ	< 200		463	500	µg/g	93%	70 - 130	
d-3-Carene	<LOQ	< 200		459	500	µg/g	92%	70 - 130	
a-Terpinene	<LOQ	< 200		450	500	µg/g	90%	70 - 130	
p-Cymene	<LOQ	< 200		449	500	µg/g	90%	70 - 130	
D-Limonene	<LOQ	< 200		451	500	µg/g	90%	70 - 130	
Eucalyptol	<LOQ	< 200		447	500	µg/g	89%	70 - 130	
b-cis-Cimene	<LOQ	< 67		159	167	µg/g	95%	70 - 130	
b-trans-Cimene	<LOQ	< 133		301	333	µg/g	90%	70 - 130	
g-Terpinene	<LOQ	< 200		458	500	µg/g	92%	70 - 130	
Sabinene Hydrate	<LOQ	< 200		452	500	µg/g	90%	70 - 130	
Terpinolene	<LOQ	< 200		446	500	µg/g	89%	70 - 130	
D-Fenchone	<LOQ	< 200		446	500	µg/g	89%	70 - 130	
Linalool	<LOQ	< 200		469	500	µg/g	94%	70 - 130	
Fenchol	<LOQ	< 200		448	500	µg/g	90%	70 - 130	
Camphor	<LOQ	< 200		449	500	µg/g	90%	70 - 130	
Isopulego	<LOQ	< 200		469	500	µg/g	94%	70 - 130	
Isoborneol	<LOQ	< 200		458	500	µg/g	92%	70 - 130	
Borneol	<LOQ	< 200		434	500	µg/g	87%	70 - 130	
DL-Menthol	<LOQ	< 200		449	500	µg/g	90%	70 - 130	
Terpineol	<LOQ	< 200		451	500	µg/g	90%	70 - 130	
Nerd	<LOQ	< 200		436	500	µg/g	87%	70 - 130	
Pulegone	<LOQ	< 200		455	500	µg/g	91%	70 - 130	
Geraniol	<LOQ	< 200		429	500	µg/g	86%	70 - 130	
Geranyl Acetate	<LOQ	< 200		446	500	µg/g	89%	70 - 130	
a-Cedrene	<LOQ	< 200		454	500	µg/g	91%	70 - 130	
b-Caryophyllene	<LOQ	< 200		453	500	µg/g	91%	70 - 130	
a-Humulene	<LOQ	< 200		449	500	µg/g	90%	70 - 130	
Valene	<LOQ	< 200		445	500	µg/g	89%	70 - 130	
cis-Nerolidol	<LOQ	< 200		461	500	µg/g	92%	70 - 130	
a-Farnesene	<LOQ	< 200		517	500	µg/g	103%	70 - 130	
trans-Nerolidol	<LOQ	< 200		456	500	µg/g	91%	70 - 130	
Caryophyllene Oxide	<LOQ	< 200		458	500	µg/g	92%	70 - 130	
Guaiol	<LOQ	< 200		452	500	µg/g	90%	70 - 130	
Cedrol	<LOQ	< 200		456	500	µg/g	91%	70 - 130	
a-Bisabolol	<LOQ	< 200		461	500	µg/g	92%	70 - 130	

Definitions

LOQ	Limit of Quantitation
LCS	Laboratory Control Sample
% REC	Percent Recovery



Revision: 1 Document ID: 7086
Legacy ID: CFL-E57Worksheet Validated 11/04/2020

Terpenes Quality Control Results

Method Reference: EPA5035		Batch ID: 2311945					
Sample/ Sample Duplicate		Sample ID: 23-012112-0001					
Analyte	Result	Org. Result	LOQ	Units	% RPD	LIMIT	Notes
a-pinene	291	293	187	µg/g	1%	< 20	
Camphene	<LOQ	<LOQ	187	µg/g	0%	< 20	
Sabinene	<LOQ	<LOQ	187	µg/g	0%	< 20	
b-Pinene	328	335	187	µg/g	2%	< 20	
b-Myrcene	931	930	187	µg/g	0%	< 20	
a-phellandrene	<LOQ	<LOQ	187	µg/g	0%	< 20	
d-3-Carene	<LOQ	<LOQ	187	µg/g	0%	< 20	
a-Terpinene	<LOQ	<LOQ	187	µg/g	0%	< 20	
p-Cymene	<LOQ	<LOQ	187	µg/g	0%	< 20	
D-Limonene	3040	3060	187	µg/g	1%	< 20	
Eucalyptol	<LOQ	<LOQ	187	µg/g	0%	< 20	
b-cis-Cimene	<LOQ	<LOQ	62.3	µg/g	0%	< 20	
b-trans-Cimene	<LOQ	<LOQ	125	µg/g	0%	< 20	
g-Terpinene	<LOQ	<LOQ	187	µg/g	0%	< 20	
Sabinene Hydrate	<LOQ	<LOQ	187	µg/g	0%	< 20	
Terpinolene	<LOQ	<LOQ	187	µg/g	0%	< 20	
D-Fenchone	<LOQ	<LOQ	187	µg/g	0%	< 20	
Linalool	2380	2420	187	µg/g	2%	< 20	
Fenchol	951	945	187	µg/g	1%	< 20	
Camphor	<LOQ	<LOQ	187	µg/g	0%	< 20	
Isopulego	<LOQ	<LOQ	187	µg/g	0%	< 20	
Isoborneol	<LOQ	<LOQ	187	µg/g	0%	< 20	
Borneol	311	317	187	µg/g	2%	< 20	
DL-Menthhol	<LOQ	<LOQ	187	µg/g	0%	< 20	
Terpineol	934	949	187	µg/g	2%	< 20	
Nerd	<LOQ	<LOQ	187	µg/g	0%	< 20	
Pulegone	<LOQ	<LOQ	187	µg/g	0%	< 20	
Geraniol	<LOQ	<LOQ	187	µg/g	0%	< 20	
Geranyl Acetate	<LOQ	<LOQ	187	µg/g	0%	< 20	
a-Cedrene	<LOQ	<LOQ	187	µg/g	0%	< 20	
b-Caryophyllene	16200	16400	187	µg/g	1%	< 20	
a-Humulene	8130	8230	187	µg/g	1%	< 20	
Valnene	769	757	187	µg/g	2%	< 20	
cis-Nerolidol	<LOQ	<LOQ	187	µg/g	0%	< 20	
a-Farnesene	<LOQ	<LOQ	187	µg/g	0%	< 20	
trans-Nerolidol	946	935	187	µg/g	1%	< 20	
Caryophyllene Oxide	544	545	187	µg/g	0%	< 20	
Guaiol	4010	4050	187	µg/g	1%	< 20	
Cedrol	<LOQ	<LOQ	187	µg/g	0%	< 20	
a-Bisabolol	482	471	187	µg/g	2%	< 20	

Definitions

RPD Relative Percent Difference



12423 NE Whitaker Way
 Portland, OR 97230
 503-254-1794



Report Number: 23-012124/D004.R000
Report Date: 10/23/2023
ORELAP#: OR100028
Purchase Order: 2672577
Received: 10/11/23 16:29

Revision: 2 Document ID: 7087
 Legacy ID: CFL-E33Effective:

Laboratory Quality Control Results

Residual Solvents				Batch ID: 2312008					
Method Blank				Laboratory Control Sample					
Analyte	Result	LOQ	Notes	Result	Spike	Units	% Rec	Limits	Notes
Propane	ND	< 200		390	584	µg/g	66.8	60 - 120	
Isobutane	ND	< 200		573	767	µg/g	74.7	60 - 120	
Butane	ND	< 200		569	782	µg/g	72.8	60 - 120	
2,2-Dimethylpropane	ND	< 200		729	939	µg/g	77.6	60 - 120	
Methanol	ND	< 200		1940	1670	µg/g	116.2	60 - 120	
Ethylene Oxide	ND	< 30		44.2	57.1	µg/g	77.4	60 - 120	
2-Methylbutane	ND	< 200		1810	1680	µg/g	107.7	60 - 120	
Pentane	ND	< 200		1800	1670	µg/g	107.8	60 - 120	
Ethanol	ND	< 200		1870	1660	µg/g	112.7	70 - 130	
Ethyl Ether	ND	< 200		1820	1670	µg/g	109.0	60 - 120	
2,2-Dimethylbutane	ND	< 30		203	189	µg/g	107.4	60 - 120	
Acetone	ND	< 200		1900	1670	µg/g	113.8	60 - 120	
2-Propanol	ND	< 200		1880	1630	µg/g	115.3	60 - 120	
Ethyl Formate	ND	< 500		1600	1600	µg/g	100.0	70 - 130	
Acetonitrile	ND	< 100		545	492	µg/g	110.8	60 - 120	
Methyl Acetate	ND	< 500		1860	1600	µg/g	116.3	70 - 130	
2,3-Dimethylbutane	ND	< 30		200	180	µg/g	111.1	60 - 120	
Dichloromethane	ND	< 60		539	488	µg/g	110.5	60 - 120	
2-Methylpentane	ND	< 30		199	182	µg/g	109.3	60 - 120	
MTBE	ND	< 500		1830	1610	µg/g	113.7	70 - 130	
3-Methylpentane	ND	< 30		197	177	µg/g	111.3	60 - 120	
Hexane	ND	< 30		190	177	µg/g	107.3	60 - 120	
1-Propanol	ND	< 500		1890	1600	µg/g	118.1	70 - 130	
Methyl ethyl ketone	ND	< 500		1850	1610	µg/g	114.9	70 - 130	
Ethyl acetate	ND	< 200		1870	1630	µg/g	114.7	60 - 120	
2-Butanol	ND	< 200		1920	1630	µg/g	117.8	60 - 120	
Tetrahydrofuran	ND	< 100		541	488	µg/g	110.9	60 - 120	
Cyclohexane	ND	< 200		1810	1610	µg/g	112.4	60 - 120	
2-methyl-1-propanol	ND	< 500		1700	1610	µg/g	105.6	70 - 130	
Benzene	ND	< 1		5.68	4.79	µg/g	118.6	60 - 120	
Isopropyl Acetate	ND	< 200		1940	1650	µg/g	117.6	60 - 120	
Heptane	ND	< 200		1830	1630	µg/g	112.3	60 - 120	
1-Butanol	ND	< 500		1880	1600	µg/g	117.5	70 - 130	
Propyl Acetate	ND	< 500		1900	1600	µg/g	118.8	70 - 130	
1,4-Dioxane	ND	< 100		620	523	µg/g	118.5	60 - 120	
2-Ethoxyethanol	ND	< 30		244	179	µg/g	136.3	60 - 120	Q6
Methylisobutylketone	ND	< 500		1670	1600	µg/g	116.9	70 - 130	
3-Methyl-1-butanol	ND	< 500		2030	1600	µg/g	126.9	70 - 130	
Ethylene Glycol	ND	< 200		514	508	µg/g	101.6	60 - 120	
Toluene	ND	< 100		588	496	µg/g	118.5	60 - 120	
Isobutyl Acetate	ND	< 500		1960	1610	µg/g	121.7	70 - 130	
1-Pentanol	ND	< 500		2080	1600	µg/g	130.0	70 - 130	Q6
Butyl Acetate	ND	< 500		1980	1610	µg/g	121.7	70 - 130	
Ethylbenzene	ND	< 200		1140	978	µg/g	116.6	60 - 120	
m,p-Xylene	ND	< 200		1160	994	µg/g	116.7	60 - 120	
o-Xylene	ND	< 200		1180	982	µg/g	120.2	60 - 120	Q6
Cumene	ND	< 30		205	171	µg/g	119.9	60 - 120	
Anisole	ND	< 500		1940	1600	µg/g	121.3	70 - 130	
DMSO	ND	< 500		2080	1620	µg/g	128.4	70 - 130	
1,2-dimethoxyethane	ND	< 50		214	186	µg/g	115.1	70 - 130	
Triethylamine	ND	< 500		1670	1600	µg/g	104.4	70 - 130	
N,N-dimethylformamide	ND	< 150		626	480	µg/g	130.4	70 - 130	Q6
N,N-dimethylacetamide	ND	< 150		573	483	µg/g	118.6	70 - 130	
Pyridine	ND	< 50		211	168	µg/g	125.6	70 - 130	
Silfolane	ND	< 50		189	161	µg/g	114.9	70 - 130	
1,2-Dichloroethane	ND	< 1		1.02	1	µg/g	102.0	70 - 130	
Chloroform	ND	< 1		1.03	1	µg/g	103.0	70 - 130	
Trichloroethylene	ND	< 1		1.06	1	µg/g	106.0	70 - 130	
1,1-Dichloroethane	ND	< 1		1.03	1	µg/g	103.0	70 - 130	



12423 NE Whitaker Way
 Portland, OR 97230
 503-254-1794



Report Number: 23-012124/D004.R000
Report Date: 10/23/2023
ORELAP#: OR100028
Purchase Order: 2672577
Received: 10/11/23 16:29

Revision: 2 Document ID: 7087
 Legacy ID: CFL-E33Effective:

QC- Sample Duplicate		Sample ID: 23-011980-0001						
Analyte	Result	Org. Result	LOQ Units	RPD	Limits	Accept/ Fail	Notes	
Propane	ND	ND	200 µg/g	0.0	< 20	Acceptable		
Isobutane	ND	ND	200 µg/g	0.0	< 20	Acceptable		
Butane	ND	ND	200 µg/g	0.0	< 20	Acceptable		
2,2-Dimethylpropane	ND	ND	200 µg/g	0.0	< 20	Acceptable		
Methanol	ND	ND	200 µg/g	0.0	< 20	Acceptable		
Ethylene Oxide	ND	ND	30 µg/g	0.0	< 20	Acceptable		
2-Methylbutane	ND	ND	200 µg/g	0.0	< 20	Acceptable		
Pentane	ND	ND	200 µg/g	0.0	< 20	Acceptable		
Ethanol	ND	ND	200 µg/g	0.0	< 20	Acceptable		
Ethyl Ether	ND	ND	200 µg/g	0.0	< 20	Acceptable		
2,2-Dimethylbutane	ND	ND	30 µg/g	0.0	< 20	Acceptable		
Acetone	ND	ND	200 µg/g	0.0	< 20	Acceptable		
2-Propanol	ND	ND	200 µg/g	0.0	< 20	Acceptable		
Ethyl Formate	ND	ND	500 µg/g	0.0	< 20	Acceptable		
Acetonitrile	ND	ND	100 µg/g	0.0	< 20	Acceptable		
Methyl Acetate	ND	ND	500 µg/g	0.0	< 20	Acceptable		
2,3-Dimethylbutane	ND	ND	30 µg/g	0.0	< 20	Acceptable		
Dichloromethane	ND	ND	60 µg/g	0.0	< 20	Acceptable		
2-Methylpentane	ND	ND	30 µg/g	0.0	< 20	Acceptable		
MTBE	ND	ND	500 µg/g	0.0	< 20	Acceptable		
3-Methylpentane	ND	ND	30 µg/g	0.0	< 20	Acceptable		
Hexane	ND	ND	30 µg/g	0.0	< 20	Acceptable		
1-Propanol	ND	ND	500 µg/g	0.0	< 20	Acceptable		
Methylethylketone	ND	ND	500 µg/g	0.0	< 20	Acceptable		
Ethyl acetate	ND	ND	200 µg/g	0.0	< 20	Acceptable		
2-Butanol	ND	ND	200 µg/g	0.0	< 20	Acceptable		
Tetrahydrofuran	ND	ND	100 µg/g	0.0	< 20	Acceptable		
Cyclohexane	ND	ND	200 µg/g	0.0	< 20	Acceptable		
2-methyl-1-propanol	ND	ND	500 µg/g	0.0	< 20	Acceptable		
Benzene	ND	ND	1 µg/g	0.0	< 20	Acceptable		
Isopropyl Acetate	ND	ND	200 µg/g	0.0	< 20	Acceptable		
Heptane	ND	ND	200 µg/g	0.0	< 20	Acceptable		
1-Butanol	ND	ND	500 µg/g	0.0	< 20	Acceptable		
Propyl Acetate	ND	ND	500 µg/g	0.0	< 20	Acceptable		
1,4-Dioxane	ND	ND	100 µg/g	0.0	< 20	Acceptable		
2-Ethoxyethanol	ND	ND	30 µg/g	0.0	< 20	Acceptable		
Methylisobutylketone	ND	ND	500 µg/g	0.0	< 20	Acceptable		
3-Methyl-1-butanol	ND	ND	500 µg/g	0.0	< 20	Acceptable		
Ethylene Glycol	ND	ND	200 µg/g	0.0	< 20	Acceptable		
Toluene	ND	ND	100 µg/g	0.0	< 20	Acceptable		
Isobutyl Acetate	ND	ND	500 µg/g	0.0	< 20	Acceptable		
1-Pentanol	ND	ND	500 µg/g	0.0	< 20	Acceptable		
Butyl Acetate	ND	ND	500 µg/g	0.0	< 20	Acceptable		
Ethylbenzene	ND	ND	200 µg/g	0.0	< 20	Acceptable		
m,p-Xylene	ND	ND	200 µg/g	0.0	< 20	Acceptable		
o-Xylene	ND	ND	200 µg/g	0.0	< 20	Acceptable		
Cumene	ND	ND	30 µg/g	0.0	< 20	Acceptable		
Anisole	ND	ND	500 µg/g	0.0	< 20	Acceptable		
DMSO	ND	ND	500 µg/g	0.0	< 20	Acceptable		
1,2-dimethoxyethane	ND	ND	50 µg/g	0.0	< 20	Acceptable		
Triethylamine	ND	ND	500 µg/g	0.0	< 20	Acceptable		
N,N-dimethylformamide	ND	ND	150 µg/g	0.0	< 20	Acceptable		
N,N-dimethylacetamide	ND	ND	150 µg/g	0.0	< 20	Acceptable		
Pyridine	ND	ND	50 µg/g	0.0	< 20	Acceptable		
Sulfolane	ND	ND	50 µg/g	0.0	< 20	Acceptable		
1,2-Dichloroethane	ND	ND	1 µg/g	0.0	< 20	Acceptable		
Chloroform	ND	ND	1 µg/g	0.0	< 20	Acceptable		
Trichloroethylene	ND	ND	1 µg/g	0.0	< 20	Acceptable		
1,1-Dichloroethane	ND	ND	1 µg/g	0.0	< 20	Acceptable		

Abbreviations

ND - None Detected at or above MRL
 RPD- Relative Percent Difference
 LOQ- Limit of Quantitation

Units of Measure:

µg/g- Microgram per gram or ppm



12423 NE Whitaker Way
Portland, OR 97230
503-254-1794



Report Number: 23-012124/D004.R000
Report Date: 10/23/2023
ORELAP#: OR100028
Purchase Order: 2672577
Received: 10/11/23 16:29





Explanation of QC Flag Comments:

Code	Explanation
Q	Matrix interferences affecting spike or surrogate recoveries.
Q1	Quality control result biased high. Only non-detect samples reported.
Q2	Quality control outside QC limits. Data considered estimate.
Q3	Sample concentration greater than four times the amount spiked.
Q4	Non-homogenous sample matrix, affecting RPD result and/or % recoveries.
Q5	Spike results above calibration curve.
Q6	Quality control outside QC limits. Data acceptable based on remaining QC.
R	Relative percent difference (RPD) outside control limit.
R1	RPD non-calculable, as sample or duplicate results are less than five times the LOQ.
R2	Sample replicates RPD non-calculable, as only one replicate is within the analytical range.
LOQ1	Quantitation level raised due to low sample volume and/or dilution.
LOQ2	Quantitation level raised due to matrix interference.
B	Analyte detected in method blank, but not in associated samples.
B1	The sample concentration is greater than 5 times the blank concentration.
B2	The sample concentration is less than 5 times the blank concentration.