

## CONSOLIDATED TEST RESULTS SUMMARY

Please see the following pages for full test results.

**BULK SKU** TN.O.FS.CM50

**BATCH #** EB21

**PRODUCT NAME** Full Spectrum, High Potency Chocolate Mint Tincture

**SERVING SIZE** 1 mL

**LABORATORY:** Columbia Laboratories

**OREGON ACCREDITATION:** OR100028

**LOQ:** Limit Of Quantitation

**LOD:** Limit Of Detection

1 g = 10<sup>-3</sup> kg = 10<sup>3</sup> mg = 10<sup>6</sup> µg  
1 mg/kg = 1 ppm = 1000 ppb

POTENCY	PER SERVING	PER GRAM	Percent
Cannabidiol (CBD)	53.5 mg/serving	56.3 mg/g	5.63 %
Total THC (d9-THC, THCA)	1.88 mg/serving	1.98 mg/g	0.198 %
Cannabigerol (CBG)	1.11 mg/serving	1.17 mg/g	0.117 %
Cannabinol (CBN)	0.0333 mg/serving	0.0351 mg/g	0.0035 %
Cannabichromene (CBC)	2.14 mg/serving	2.25 mg/g	0.225 %
Tetrahydrocannabinolic Acid (THCA)	<LOQ mg/serving	<LOQ mg/g	<LOQ %
Delta-9-THC (d9-THC)	1.88 mg/serving	1.98 mg/g	0.198 %
Delta-8-THC (d8-THC)	<LOQ mg/serving	<LOQ mg/g	<LOQ %

HEAVY METALS	PER SERVING	PER GRAM	REGULATORY ACTION LEVEL
Arsenic	<LOQ µg/serving	<LOQ µg/g	10 µg/day <sup>[1]</sup>
Cadmium	<LOQ µg/serving	<LOQ µg/g	4.1 µg/day <sup>[1]</sup>
Lead	<LOQ µg/serving	<LOQ µg/g	3.5 µg/day <sup>[2]</sup>
Mercury	<LOQ µg/serving	<LOQ µg/g	2 µg/day <sup>[1]</sup>

PESTICIDES	REGULATORY ACTION LEVEL
None of the other 59 pesticides tested found above limit of detection in the sample.	10 ppb <sup>[1]</sup>

RESIDUAL SOLVENTS	Results	REGULATORY ACTION LEVEL
Ethanol	<LOQ	50,000 mg/day
Heptane	<LOQ	50,000 mg/day
None of the 34 residual solvents tested found above limit of quantitation in the sample.		

MICROBIAL	PASS/FAIL
Yeast & Mold	Pass
Coliform	Pass

TERPENES	% OF SAMPLE
Farnesene	0.110 %
β-Caryophyllene	0.0904 %
α-Bisabolol	0.0621 %
Guaiol	<LOQ %
Humulene	0.0355 %
Caryophyllene Oxide	0.0294 %



1. American Herbal Pharmacopoeia. (2014). Cannabis Inflorescence: Standards of Identity, Analysis, and Quality Control. Washington DC: AHP.

2. US Food and Drug Administration. (2019). Lead in Food, Foodwares, and Dietary Supplements. Washington DC: FDA. US Food and Drug Administration. (2019). Lead in Food, Foodwares, and Dietary Supplements. Washington DC: FDA.



12423 NE Whitaker Way  
 Portland, OR 97230  
 503-254-1794



**Report Number:** 22-002260/D005.R000  
**Report Date:** 03/09/2022  
**ORELAP#:** OR100028  
**Purchase Order:**  
**Received:** 02/28/22 14:02

**Customer:** Etz Hayim Holdings  
**Product identity:** EB21-TN.O.FS.CM50  
**Client/Metric ID:** .  
**Laboratory ID:** 22-002260-0001

### Summary

#### Potency:

Analyte per 1ml	Result	Limits	Units	Status	
CBC per 1ml <sup>†</sup>	2.14		mg/1ml		CBD Total per 1ml 53.5 mg/1ml
CBD per 1ml	53.5		mg/1ml		
CBDV per 1ml <sup>†</sup>	0.216		mg/1ml		THC-Total per 1ml 1.88 mg/1ml
CBE per 1ml <sup>†</sup>	0.682		mg/1ml		
CBG per 1ml <sup>†</sup>	1.11		mg/1ml		(Reported in milligrams per serving)
CBN per 1ml	0.0333		mg/1ml		
CBT per 1ml <sup>†</sup>	1.29		mg/1ml		
Δ9 THC per 1ml	1.88		mg/1ml		

#### Residual Solvents:

All analytes passing and less than LOQ.

#### Pesticides:

All analytes passing and less than LOQ.

#### Terpenes:

Analyte	Percent by weight	Percent of Total	Analyte	Percent by weight	Percent of Total
farnesene <sup>†</sup>	0.110	26.89%	β-Caryophyllene <sup>†</sup>	0.0904	22.10%
α-Bisabolol <sup>†</sup>	0.0621	15.18%	Humulene <sup>†</sup>	0.0355	8.68%
(-)-Isopulegol <sup>†</sup>	0.0345	8.44%	(-)-caryophyllene oxide <sup>†</sup>	0.0294	7.19%
β-Myrcene <sup>†</sup>	0.0248	6.06%	Menthol <sup>†</sup>	0.0225	5.50%
<b>Total Terpenes<sup>†</sup></b>	<b>0.409</b>	<b>100.00%</b>			

#### Metals:

Less than LOQ for all analytes.



12423 NE Whitaker Way  
 Portland, OR 97230  
 503-254-1794

**Report Number:** 22-002260/D005.R000  
**Report Date:** 03/09/2022  
**ORELAP#:** OR100028  
**Purchase Order:**  
**Received:** 02/28/22 14:02



**Customer:** Etz Hayim Holdings  
 16427 NE Airport Way  
 PORTLAND 97230  
 United States of America (USA)

**Product identity:** EB21-TN.O.FS.CM50

**Client/Metric ID:** .

**Sample Date:**

**Laboratory ID:** 22-002260-0001

**Evidence of Cooling:** No

**Temp:** 20.6 °C

**Relinquished by:** Client

**Serving Size #1:** 0.95 g

**Density:** 0.9500 g/ml

### Sample Results

Potency per 1ml	Method J AOAC 2015 V98-6 (mod)Units mg/se	Batch: 2201832	Analyze: 3/2/22 1:18:00 PM		
Analyte	Result	Limits	Units	LOQ	Notes
CBC per 1ml <sup>†</sup>	2.14		mg/1ml	0.0307	
CBC-A per 1ml <sup>†</sup>	< LOQ		mg/1ml	0.0307	
CBC-Total per 1ml <sup>†</sup>	2.14		mg/1ml	0.0577	
CBD per 1ml	53.5		mg/1ml	0.307	
CBD-A per 1ml	< LOQ		mg/1ml	0.0307	
CBD-Total per 1ml	53.5		mg/1ml	0.334	
CBDV per 1ml <sup>†</sup>	0.216		mg/1ml	0.0307	
CBDV-A per 1ml <sup>†</sup>	< LOQ		mg/1ml	0.0307	
CBDV-Total per 1ml <sup>†</sup>	0.216		mg/1ml	0.0574	
CBE per 1ml <sup>†</sup>	0.682		mg/1ml	0.0307	
CBG per 1ml <sup>†</sup>	1.11		mg/1ml	0.0307	
CBG-A per 1ml <sup>†</sup>	< LOQ		mg/1ml	0.0307	
CBG-Total per 1ml <sup>†</sup>	1.11		mg/1ml	0.0574	
CBL per 1ml <sup>†</sup>	< LOQ		mg/1ml	0.0307	
CBL-A per 1ml <sup>†</sup>	< LOQ		mg/1ml	0.0307	
CBL-Total per 1ml <sup>†</sup>	< LOQ		mg/1ml	0.0577	
CBN per 1ml	0.0333		mg/1ml	0.0307	
CBT per 1ml <sup>†</sup>	1.29		mg/1ml	0.0307	
Δ8-THCV per 1ml <sup>†</sup>	< LOQ		mg/1ml	0.0307	
Δ8-THC per 1ml <sup>†</sup>	< LOQ		mg/1ml	0.0307	
Δ9-THC per 1ml	1.88		mg/1ml	0.0307	
exo-THC per 1ml <sup>†</sup>	< LOQ		mg/1ml	0.0307	
THC-A per 1ml	< LOQ		mg/1ml	0.0307	
THC-Total per 1ml	1.88		mg/1ml	0.0577	
THCV per 1ml <sup>†</sup>	< LOQ		mg/1ml	0.0307	
THCV-A per 1ml <sup>†</sup>	< LOQ		mg/1ml	0.0307	
THCV-Total per 1ml <sup>†</sup>	< LOQ		mg/1ml	0.0577	
Total Cannabinoids per 1ml	60.8		mg/1ml		



12423 NE Whitaker Way  
 Portland, OR 97230  
 503-254-1794



**Report Number:** 22-002260/D005.R000  
**Report Date:** 03/09/2022  
**ORELAP#:** OR100028  
**Purchase Order:**  
**Received:** 02/28/22 14:02

Solvents						Residual Solvents by GC/MS							
Analyte	Method	Result	Limits	LOQ	Status	Notes	Analyte	Method	Result	Limits	LOQ	Status	Notes
1,4-Dioxane		< LOQ	380	100	pass		2-Butanol		< LOQ	5000	200	pass	
2-Ethoxyethanol		< LOQ	160	30.0	pass		2-Methylbutane (Isopentane)		< LOQ		200		
2-Methylpentane		< LOQ		30.0			2-Propanol (IPA)		< LOQ	5000	200	pass	
2,2-Dimethyl butane		< LOQ		30.0			2,2-Dimethylpropane (neo-pentane)		< LOQ		200		
2,3-Dimethyl butane		< LOQ		30.0			3-Methylpentane		< LOQ		30.0		
Acetone		< LOQ	5000	200	pass		Acetonitrile		< LOQ	410	100	pass	
Benzene		< LOQ	2.00	1.00	pass		Butanes (sum)		< LOQ	5000	400	pass	
Cyclohexane		< LOQ	3880	200	pass		Ethanol <sup>l</sup>		< LOQ		200		
Ethyl acetate		< LOQ	5000	200	pass		Ethyl benzene		< LOQ		200		
Ethyl ether		< LOQ	5000	200	pass		Ethylene glycol		< LOQ	620	200	pass	
Ethylene oxide		< LOQ	50.0	20.0	pass		Hexanes (sum)		< LOQ	290	150	pass	
Isopropyl acetate		< LOQ	5000	200	pass		Isopropylbenzene (Cumene)		< LOQ	70.0	30.0	pass	
m,p-Xylene		< LOQ		200			Methanol		< LOQ	3000	200	pass	
Methylene chloride		< LOQ	600	60.0	pass		Methylpropane (Isobutane)		< LOQ		200		
n-Butane		< LOQ		200			n-Heptane		< LOQ	5000	200	pass	
n-Hexane		< LOQ		30.0			n-Pentane		< LOQ		200		
o-Xylene		< LOQ		200			Pentanes (sum)		< LOQ	5000	600	pass	
Propane		< LOQ	5000	200	pass		Tetrahydrofuran		< LOQ	720	100	pass	
Toluene		< LOQ	890	100	pass		Total Xylenes		< LOQ		400		
Total Xylenes and Ethyl benzene		< LOQ	2170	600	pass								



12423 NE Whitaker Way  
 Portland, OR 97230  
 503-254-1794



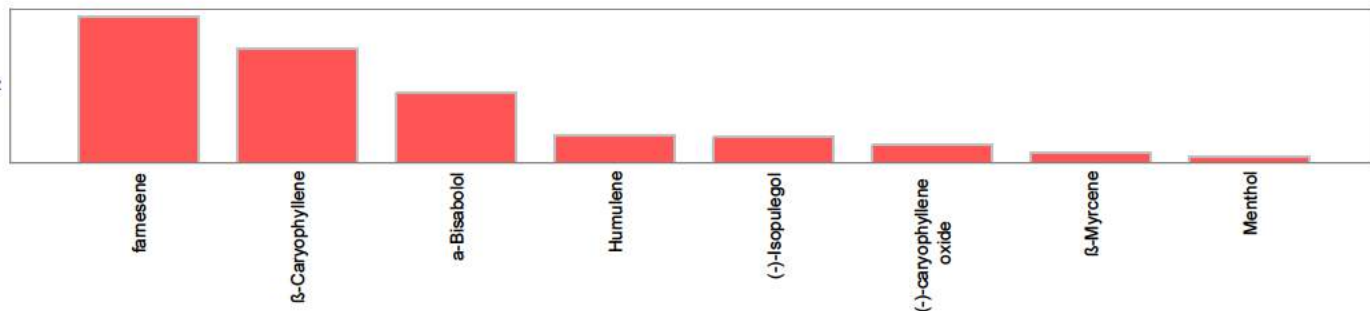
**Report Number:** 22-002260/D005.R000  
**Report Date:** 03/09/2022  
**ORELAP#:** OR100028  
**Purchase Order:**  
**Received:** 02/28/22 14:02

Pesticides											
Method AOAC 2007.01 & EN 15662 (mod) Units mg/kg Batch 2202028 Analyze 03/09/22 08:57 AM											
Analyte	Result	Limits	LOQ	Status	Notes	Analyte	Result	Limits	LOQ	Status	Notes
Abamectin	< LOQ	0.50	0.250	pass		Acephate	< LOQ	0.40	0.250	pass	
Acequinocyl	< LOQ	2.0	1.00	pass		Acetamiprid	< LOQ	0.20	0.100	pass	
Aldicarb	< LOQ	0.40	0.200	pass		Azoxystrobin	< LOQ	0.20	0.100	pass	
Bifenazate	< LOQ	0.20	0.100	pass		Bifenthrin	< LOQ	0.20	0.100	pass	
Boscalid	< LOQ	0.40	0.200	pass		Carbaryl	< LOQ	0.20	0.100	pass	
Carbofuran	< LOQ	0.20	0.100	pass		Chlorantraniliprole	< LOQ	0.20	0.100	pass	
Chlorfenapyr	< LOQ	1.0	0.500	pass		Chlorpyrifos	< LOQ	0.20	0.100	pass	
Clofentezine	< LOQ	0.20	0.100	pass		Cyfluthrin	< LOQ	1.0	0.500	pass	
Cypermethrin	< LOQ	1.0	0.500	pass		Daminozide	< LOQ	1.0	0.500	pass	
Diazinon	< LOQ	0.20	0.100	pass		Dichlorvos	< LOQ	1.0	0.500	pass	
Dimethoate	< LOQ	0.20	0.100	pass		Ethoprophos	< LOQ	0.20	0.100	pass	
Etofenprox	< LOQ	0.40	0.200	pass		Etoxazole	< LOQ	0.20	0.100	pass	
Fenoxycarb	< LOQ	0.20	0.100	pass		Fenpyroximate	< LOQ	0.40	0.200	pass	
Fipronil	< LOQ	0.40	0.200	pass		Fonicamid	< LOQ	1.0	0.400	pass	
Fludioxonil	< LOQ	0.40	0.200	pass		Hexythiazox	< LOQ	1.0	0.400	pass	
Imazalil	< LOQ	0.20	0.100	pass		Imidacloprid	< LOQ	0.40	0.200	pass	
Kresoxim-methyl	< LOQ	0.40	0.200	pass		Malathion	< LOQ	0.20	0.100	pass	
Metalaxyl	< LOQ	0.20	0.100	pass		Methiocarb	< LOQ	0.20	0.100	pass	
Methomyl	< LOQ	0.40	0.200	pass		MGK-264	< LOQ	0.20	0.100	pass	
Myclobutanil	< LOQ	0.20	0.100	pass		Naled	< LOQ	0.50	0.250	pass	
Oxamyl	< LOQ	1.0	0.500	pass		Paclbutrazole	< LOQ	0.40	0.200	pass	
Parathion-Methyl	< LOQ	0.20	0.200	pass		Permethrin	< LOQ	0.20	0.100	pass	
Phosmet	< LOQ	0.20	0.100	pass		Piperonyl butoxide	< LOQ	2.0	1.00	pass	
Prallethrin	< LOQ	0.20	0.200	pass		Propiconazole	< LOQ	0.40	0.200	pass	
Propoxur	< LOQ	0.20	0.100	pass		Pyrethrin I (total)	< LOQ	1.0	0.500	pass	
Pyridaben	< LOQ	0.20	0.100	pass		Spinosad	< LOQ	0.20	0.100	pass	
Spiromesifen	< LOQ	0.20	0.100	pass		Spirotetramat	< LOQ	0.20	0.100	pass	
Spiroxamine	< LOQ	0.40	0.200	pass		Tebuconazole	< LOQ	0.40	0.200	pass	
Thiacloprid	< LOQ	0.20	0.100	pass		Thiamethoxam	< LOQ	0.20	0.100	pass	
Trifloxystrobin	< LOQ	0.20	0.100	pass							





Terpenes				Method J AOAC 2015 V98-6	Units %	Batch 2202040	Analyze 03/08/22 03:53 PM		
Analyte	Result	LOQ	% of Total	Notes	Analyte	Result	LOQ	% of Total	Notes
farnesene <sup>†</sup>	0.110	0.019	26.895%		β-Caryophyllene <sup>†</sup>	0.0904	0.019	22.1027%	
α-Bisabolol <sup>†</sup>	0.0621	0.019	15.1834%		Humulene <sup>†</sup>	0.0355	0.019	8.6797%	
(-)-Isopulegol <sup>†</sup>	0.0345	0.019	8.4352%		(-)-caryophyllene oxide <sup>†</sup>	0.0294	0.019	7.1883%	
β-Myrcene <sup>†</sup>	0.0248	0.019	6.0636%		Menthol <sup>†</sup>	0.0225	0.019	5.5012%	
(-)-Guaiol <sup>†</sup>	< LOQ	0.019	0.00%		Geraniol <sup>†</sup>	< LOQ	0.019	0.00%	
(R)-(+)-Limonene <sup>†</sup>	< LOQ	0.019	0.00%		nerol <sup>†</sup>	< LOQ	0.019	0.00%	
Geranyl acetate <sup>†</sup>	< LOQ	0.019	0.00%		Terpinolene <sup>†</sup>	< LOQ	0.019	0.00%	
Sabinene <sup>†</sup>	< LOQ	0.019	0.00%		γ-Terpinene <sup>†</sup>	< LOQ	0.019	0.00%	
(+)-Pulegone <sup>†</sup>	< LOQ	0.019	0.00%		valencene <sup>†</sup>	< LOQ	0.019	0.00%	
(-)-α-Terpineol <sup>†</sup>	< LOQ	0.019	0.00%		Isoborneol <sup>†</sup>	< LOQ	0.019	0.00%	
(-)-β-Pinene <sup>†</sup>	< LOQ	0.019	0.00%		(±)-cis-Nerolidol <sup>†</sup>	< LOQ	0.019	0.00%	
(±)-trans-Nerolidol <sup>†</sup>	< LOQ	0.019	0.00%		(+)-fenchol <sup>†</sup>	< LOQ	0.019	0.00%	
Eucalyptol <sup>†</sup>	< LOQ	0.019	0.00%		(±)-fenchone <sup>†</sup>	< LOQ	0.019	0.00%	
d-3-Carene <sup>†</sup>	< LOQ	0.019	0.00%		(+)-Borneol <sup>†</sup>	< LOQ	0.019	0.00%	
(+)-Cedrol <sup>†</sup>	< LOQ	0.019	0.00%		(±)-Camphor <sup>†</sup>	< LOQ	0.019	0.00%	
α-cedrene <sup>†</sup>	< LOQ	0.019	0.00%		α-phellandrene <sup>†</sup>	< LOQ	0.019	0.00%	
α-pinene <sup>†</sup>	< LOQ	0.019	0.00%		α-Terpinene <sup>†</sup>	< LOQ	0.019	0.00%	
Camphene <sup>†</sup>	< LOQ	0.019	0.00%		cis-β-Ocimene <sup>†</sup>	< LOQ	0.006	0.00%	
Linalool <sup>†</sup>	< LOQ	0.019	0.00%		p-Cymene <sup>†</sup>	< LOQ	0.019	0.00%	
Sabinene hydrate <sup>†</sup>	< LOQ	0.019	0.00%		trans-β-Ocimene <sup>†</sup>	< LOQ	0.013	0.00%	
<b>Total Terpenes</b>	<b>0.409</b>								



Metals									
Analyte	Result	Limits	Units	LOQ	Batch	Analyze	Method	Status	Notes
Arsenic	< LOQ	0.200	mg/kg	0.0846	2201972	03/07/22	AOAC 2013.06 (mod.)	pass	X
Cadmium	< LOQ	0.200	mg/kg	0.0846	2201972	03/07/22	AOAC 2013.06 (mod.)	pass	X
Lead	< LOQ	0.500	mg/kg	0.0846	2201972	03/07/22	AOAC 2013.06 (mod.)	pass	X
Mercury	< LOQ	0.100	mg/kg	0.0423	2201972	03/07/22	AOAC 2013.06 (mod.)	pass	X



12423 NE Whitaker Way  
Portland, OR 97230  
503-254-1794



**Report Number:** 22-002260/D005.R000  
**Report Date:** 03/09/2022  
**ORELAP#:** OR100028  
**Purchase Order:**  
**Received:** 02/28/22 14:02

These test results are representative of the individual sample selected and submitted by the client.

**Abbreviations**

**Limits:** Action Levels per OAR-333-007-0400, OAR-333-007-0210, OAR-333-007-0220, CCR title 16-division 42. BCC-section 5723

**Limit(s) of Quantitation (LOQ):** The minimum levels, concentrations, or quantities of a target variable (e.g., target analyte) that can be reported with a specified degree of confidence.

† = Analyte not NELAP accredited.

**Units of Measure**

g = Gram

g/ml = Gram per milliliter

µg/g = Microgram per gram

mg/kg = Milligram per kilogram = parts per million (ppm)

mg/1ml = Milligram per 1ml

% = Percentage of sample

% wt = µg/g divided by 10,000

**Glossary of Qualifiers**

X: Not ORELAP accredited.

Approved Signatory

Derrick Tanner  
General Manager



12423 NE Whitaker Way  
Portland, OR 97230  
503-254-1794



**Report Number:** 22-002260/D005.R000  
**Report Date:** 03/09/2022  
**ORELAP#:** OR100028  
**Purchase Order:**  
**Received:** 02/28/22 14:02



12423 NE Whitaker Way Portland OR 97230 p.503-254-1794

**Cannabis Chain of Custody Record**

ORELAP ID: OR100028

Field ID		Date/Time Collected		Analysis Requested										Matrix			Serving size for edibles	Comments/Metric ID		
				Pesticides - OR 59 compounds	Pesticide Multi-Residue - 379 compounds	Potency	Residual Solvents	Water Activity	Moisture	Terpenes	Micro: Yeast and Mold	Micro: E. Coli and Total Coliform	Heavy Metals	Mycotoxins	Other					
[Redacted]		[Redacted]				X										Liquid TN.				LAZ. NAT Discour
EB21-TN.D.FS.CMSD		2/14/22 5P					X				X	X	X	X						potency 1st
EB21-TN.D.FS.CMSD		2/14/22 5P		X			X			X	X	X	X							

Purchase Order Number:  
Project Number:  
Project Name:  
 Report Instructions:  
 Send to State - METRC  
 Email Final Results:  
 Fax Final Results  
 Cash/Check/CC/Net 30  
Other:

Collected By:	Relinquished By:	Date	Time	Received by:	Date	Time	Lab Use Only:
<input checked="" type="checkbox"/> Standard (5 day)	[Redacted]	[Redacted]	[Redacted]	[Redacted]	[Redacted]	[Redacted]	Client Alias: Order Number: Proper Container Sample Condition Temperature: 20.6 Shipped Via: <i>Lowie</i> Evidence of cooling: <input type="checkbox"/> Yes <input checked="" type="checkbox"/> No
<input type="checkbox"/> Rush (3-4 day) (1.5x Standard)							
<input type="checkbox"/> Priority Rush (2 day) (2x Standard)							

SUBMISSION OF SAMPLES WITH TESTING REQUIREMENTS TO PIXIS WILL BE UNDERSTOOD TO BE AN AGREEMENT FOR SERVICES IN ACCORDANCE WITH THE CONDITIONS LISTED ON THE BACK OF THIS FORM  
Revision: 1.02 Control#: CF023 Effective 01/31/2019 Revised 01/31/2019 [www.pixislabs.com](http://www.pixislabs.com) Page 1 of 2

Test results relate only to the parameters tested and to the samples as received by the laboratory. Test results meet all requirements of NELAP and the Columbia Laboratories quality assurance plan unless otherwise noted. This report shall not be reproduced, except in full, without the written consent of this laboratory. Samples will be retained for a maximum of 30 days from the receipt date unless prior arrangements have been made.  
Testing in accordance with: OAR 333-007-0400 OAR 333-007-0410 OAR 333-007-0430





12423 NE Whitaker Way  
 Portland, OR 97230  
 503-254-1794

**Report Number:** 22-002260/D005.R000  
**Report Date:** 03/09/2022  
**ORELAP#:** OR100028  
**Purchase Order:**  
**Received:** 02/28/22 14:02



Revision 1 Documen D 7148  
 Legacy D Workshee Valida ed 04/20/2021

Laboratory Quality Control Results

JAOAC2015 V98-6							
Batch ID 2201832							
Laboratory Control Sample							
Analyte	Result	Spike	Units	% Rec	Limits	Evaluation	Notes
CBDVA	0.00902	0.01	%	90.2	85.0 - 115	Acceptable	
CBDV	0.0109	0.01	%	109	85.0 - 115	Acceptable	
CBE	0.00891	0.01	%	89.1	85.0 - 115	Acceptable	
CBDA	0.00985	0.01	%	98.5	85.0 - 115	Acceptable	
CBGA	0.00894	0.01	%	89.4	85.0 - 115	Acceptable	
CBG	0.00963	0.01	%	96.3	85.0 - 115	Acceptable	
CBD	0.00992	0.01	%	99.2	85.0 - 115	Acceptable	
THCV	0.00939	0.01	%	93.9	85.0 - 115	Acceptable	
d8THCV	0.00972	0.01	%	97.2	85.0 - 115	Acceptable	
THCVA	0.00866	0.01	%	86.6	85.0 - 115	Acceptable	
CBN	0.00995	0.01	%	99.5	85.0 - 115	Acceptable	
exo-THC	0.00893	0.01	%	89.3	85.0 - 115	Acceptable	
d9THC	0.00945	0.01	%	94.5	85.0 - 115	Acceptable	
d8THC	0.00962	0.01	%	96.2	85.0 - 115	Acceptable	
CBL	0.00859	0.01	%	85.9	85.0 - 115	Acceptable	
CBC	0.00982	0.01	%	98.2	85.0 - 115	Acceptable	
THCA	0.00923	0.01	%	92.3	85.0 - 115	Acceptable	
CBCA	0.00939	0.01	%	93.9	85.0 - 115	Acceptable	
CBLA	0.00935	0.01	%	93.5	85.0 - 115	Acceptable	
CBT	0.0113	0.01	%	113	85.0 - 115	Acceptable	

Method Blank

Analyte	Result	LOQ	Units	Limits	Evaluation	Notes
CBDVA	< LOQ	0.003	%	< 0.003	Acceptable	
CBDV	< LOQ	0.003	%	< 0.003	Acceptable	
CBE	< LOQ	0.003	%	< 0.003	Acceptable	
CBDA	< LOQ	0.003	%	< 0.003	Acceptable	
CBGA	< LOQ	0.003	%	< 0.003	Acceptable	
CBG	< LOQ	0.003	%	< 0.003	Acceptable	
CBD	< LOQ	0.003	%	< 0.003	Acceptable	
THCV	< LOQ	0.003	%	< 0.003	Acceptable	
d8THCV	< LOQ	0.003	%	< 0.003	Acceptable	
THCVA	< LOQ	0.003	%	< 0.003	Acceptable	
CBN	< LOQ	0.003	%	< 0.003	Acceptable	
exo-THC	< LOQ	0.003	%	< 0.003	Acceptable	
d9THC	< LOQ	0.003	%	< 0.003	Acceptable	
d8THC	< LOQ	0.003	%	< 0.003	Acceptable	
CBL	< LOQ	0.003	%	< 0.003	Acceptable	
CBC	< LOQ	0.003	%	< 0.003	Acceptable	
THCA	< LOQ	0.003	%	< 0.003	Acceptable	
CBCA	< LOQ	0.003	%	< 0.003	Acceptable	
CBLA	< LOQ	0.003	%	< 0.003	Acceptable	
CBT	< LOQ	0.003	%	< 0.003	Acceptable	

Abbreviations

ND - None Detected at or above MRL  
 RPD - Relative Percent Difference  
 LOQ - Limit of Quantitation

Units of Measure:

% - Percent



12423 NE Whitaker Way  
Portland, OR 97230  
503-254-1794



**Report Number:** 22-002260/D005.R000  
**Report Date:** 03/09/2022  
**ORELAP#:** OR100028  
**Purchase Order:**  
**Received:** 02/28/22 14:02

Revision 1 Document D 7148  
Legacy D Workshee Validated 04/20/2021

Laboratory Quality Control Results

JAOAC2015 V98-6								
Batch ID 2201832								
Sample Duplicate								
Sample D 22-002235-0001								
Analyte	Result	Org. Result	LOQ	Units	RPD	Limits	Evaluation	Notes
CBDVA	< LOQ	< LOQ	0.003	%	NA	< 20	Acceptable	
CBDV	0.0313	0.0311	0.003	%	0.792	< 20	Acceptable	
CBE	0.0727	0.0739	0.003	%	1.68	< 20	Acceptable	
CBDA	< LOQ	< LOQ	0.003	%	NA	< 20	Acceptable	
CBGA	< LOQ	< LOQ	0.003	%	NA	< 20	Acceptable	
CBG	0.0760	0.0766	0.003	%	0.743	< 20	Acceptable	
CBD	5.20	5.18	0.003	%	0.423	< 20	Acceptable	
THCV	< LOQ	< LOQ	0.003	%	NA	< 20	Acceptable	
d8THCV	< LOQ	< LOQ	0.003	%	NA	< 20	Acceptable	
THCVA	< LOQ	< LOQ	0.003	%	NA	< 20	Acceptable	
CBN	0.0134	0.0138	0.003	%	2.99	< 20	Acceptable	
exo-THC	< LOQ	< LOQ	0.003	%	NA	< 20	Acceptable	
d9THC	0.170	0.172	0.003	%	1.23	< 20	Acceptable	
d8THC	< LOQ	< LOQ	0.003	%	NA	< 20	Acceptable	
CBL	< LOQ	< LOQ	0.003	%	NA	< 20	Acceptable	
CBC	0.177	0.177	0.003	%	0.164	< 20	Acceptable	
THCA	< LOQ	< LOQ	0.003	%	NA	< 20	Acceptable	
CBCA	< LOQ	< LOQ	0.003	%	NA	< 20	Acceptable	
CBLA	< LOQ	< LOQ	0.003	%	NA	< 20	Acceptable	
CBT	0.133	0.132	0.003	%	0.615	< 20	Acceptable	

**Abbreviations**

ND - None Detected at or above MRL  
RPD - Relative Percent Difference  
LOQ - Limit of Quantitation

**Units of Measure:**

% - Percent



12423 NE Whitaker Way  
Portland, OR 97230  
503-254-1794



**Report Number:** 22-002260/D005.R000  
**Report Date:** 03/09/2022  
**ORELAP#:** OR100028  
**Purchase Order:**  
**Received:** 02/28/22 14:02

Revision Document ID  
Legacy ID Effective

Laboratory Quality Control Results

Batch ID: 220 996

Residual Solvents		Method Blank		Laboratory Control Sample					
Analyte	Result	LOQ	Notes	Result	Spike	Units	% Rec	Limits	Notes
Propane	ND	200		682	5.2	µg/g	92	0	0
Isobutane	ND	200		902	3	µg/g	23	0	0
Butane	ND	200		905	3	µg/g	23.8	0	0
2,2-Dimethylpropane	ND	200		30	936	µg/g	20	0	0
Methanol	ND	200		90	6.0	µg/g	92.5	0	0
Ethylene Oxide	ND	30		69.6	56.2	µg/g	23.8	0	0
2-Methylbutane	ND	200		6.0	630	µg/g	98.8	0	0
Pentane	ND	200		590	6.0	µg/g	98.8	0	0
Ethanol	ND	200		500	630	µg/g	92.0	0	0
Ethyl Ether	ND	200		560	6.0	µg/g	96.9	0	0
2,2-Dimethylbutane	ND	30		59	65	µg/g	96	0	0
Acetone	ND	200		6.0	6.0	µg/g	0.9	0	0
2-Propanol	ND	200		5.0	6.0	µg/g	9.5	0	0
Ethyl Formate	ND	500		300	620	µg/g	80.2	0	0
Acetonitrile	ND	00		8	98	µg/g	96.6	0	0
Methyl Acetate	ND	500		23.0	8.0	µg/g	29.3	0	0
2,3-Dimethylbutane	ND	30			62	µg/g	09.3	0	0
Dichloromethane	ND	60		60	98	µg/g	92	0	0
2-Methylpentane	ND	30		6	6	µg/g	00.0	0	0
M. BE	ND	500		5.0	6.0	µg/g	9.5	0	0
3-Methylpentane	ND	30		63	9	µg/g	9	0	0
Hexane	ND	30		5	6	µg/g	93.9	0	0
Propanol	ND	500		30	620	µg/g	06.8	0	0
Methyl ethyl ketone	ND	500		8.0	0	µg/g	0	0	0
Ethyl acetate	ND	200		6.0	620	µg/g	99	0	0
2-Butanol	ND	200		00	600	µg/g	8.5	0	0
tetrahydrofuran	ND	00		86	500	µg/g	9.2	0	0
Cyclohexane	ND	200		5.0	6.0	µg/g	9.5	0	0
2-methyl propanol	ND	500		550	6.0	µg/g	96.2	0	0
Benzene	ND			5.99	5.62	µg/g	06.6	0	0
Isopropyl Acetate	ND	200		690	6.0	µg/g	05.0	0	0
Heptane	ND	200		660	6.0	µg/g	03	0	0
Butanol	ND	500		00	620	µg/g	0.9	0	0
Propyl Acetate	ND	500		0	620	µg/g	09.3	0	0
Dioxane	ND	00		2	502	µg/g	82	0	0
2-Ethoxyethanol	ND	30		6	6	µg/g	98.2	0	0
Methyl isobutyl ketone	ND	500		20	620	µg/g	06.2	0	0
3-Methyl butanol	ND	500		530	620	µg/g	9	0	0
Ethylene Glycol	ND	200		6	502	µg/g	9.8	0	0
o-cresol	ND	200		56	88	µg/g	93	0	0
Isobutyl Acetate	ND	500		950	00	µg/g		0	0
Pentanol	ND	500		350	630	µg/g	82.8	0	0
Butyl Acetate	ND	500		8.0	660	µg/g	0.8	0	0
Ethyl benzene	ND	200		888	65	µg/g	92.0	0	0
m,p-Xylene	ND	200		8.2	990	µg/g	88	0	0
o-Xylene	ND	200		8.0	9	µg/g	89.6	0	0
Cumene	ND	30		59	9	µg/g	88.8	0	0
Anisole	ND	500		360	650	µg/g	82	0	0
DMSO	ND	500		2.0	630	µg/g	2	0	0
2,2-dimethoxyethane	ND	50		2.0	83	µg/g	8	0	0
diethylamine	ND	500		80	620	µg/g	9	0	0
N,N-dimethylformamide	ND	50		5	95	µg/g	83.8	0	0
N,N-dimethylacetamide	ND	50		356	502	µg/g	0.9	0	0
Pyridine	ND	50		86	86	µg/g	00.0	0	0
2-Dichloroethane	ND			25		µg/g	25.0	0	0
Chloroform	ND			22		µg/g	22.0	0	0
trichloroethylene	ND			08		µg/g	08.0	0	0



12423 NE Whitaker Way  
 Portland, OR 97230  
 503-254-1794



**Report Number:** 22-002260/D005.R000  
**Report Date:** 03/09/2022  
**ORELAP#:** OR100028  
**Purchase Order:**  
**Received:** 02/28/22 14:02

Revision Document ID  
 Legacy ID Effective

QC Sample Duplicate Sample ID: 22 002391 0001

Analyte	Result	Org. Result	LOQ	Units	RPD	Limits	Accept/Fail	Notes
Propane	ND	ND	200	µg/g	0.0	20	Acceptable	
Isobutane	ND	ND	200	µg/g	0.0	20	Acceptable	
Butane	ND	ND	200	µg/g	0.0	20	Acceptable	
2,2 Dimethylpropane	ND	ND	200	µg/g	0.0	20	Acceptable	
Methanol	ND	ND	200	µg/g	0.0	20	Acceptable	
Ethyl Oxide	ND	ND	30	µg/g	0.0	20	Acceptable	
2 Methylbutane	ND	ND	200	µg/g	0.0	20	Acceptable	
Pentane	ND	ND	200	µg/g	0.0	20	Acceptable	
Ethanol	ND	ND	200	µg/g	0.0	20	Acceptable	
Ethyl Ether	ND	ND	200	µg/g	0.0	20	Acceptable	
2,2 Dimethylbutane	ND	ND	30	µg/g	0.0	20	Acceptable	
Acetone	ND	ND	200	µg/g	0.0	20	Acceptable	
2 Propanol	ND	ND	200	µg/g	0.0	20	Acceptable	
Ethyl Formate	ND	ND	500	µg/g	0.0	20	Acceptable	
Acetonitrile	ND	ND	00	µg/g	0.0	20	Acceptable	
Methyl Acetate	ND	ND	500	µg/g	0.0	20	Acceptable	
2,3 Dimethylbutane	ND	ND	30	µg/g	0.0	20	Acceptable	
Dichloromethane	ND	ND	60	µg/g	0.0	20	Acceptable	
2 Methylpentane	ND	ND	30	µg/g	0.0	20	Acceptable	
M.E.	ND	ND	500	µg/g	0.0	20	Acceptable	
3 Methylpentane	ND	ND	30	µg/g	0.0	20	Acceptable	
Hexane	ND	ND	30	µg/g	0.0	20	Acceptable	
Propanol	ND	ND	500	µg/g	0.0	20	Acceptable	
Methyl ethyl ketone	ND	ND	500	µg/g	0.0	20	Acceptable	
Ethyl acetate	ND	ND	200	µg/g	0.0	20	Acceptable	
2 Butanol	ND	ND	200	µg/g	0.0	20	Acceptable	
tetrahydrofuran	ND	ND	00	µg/g	0.0	20	Acceptable	
Cyclohexane	ND	ND	200	µg/g	0.0	20	Acceptable	
2 methyl propanol	ND	ND	500	µg/g	0.0	20	Acceptable	
Benzene	ND	ND	100	µg/g	0.0	20	Acceptable	
Isopropyl Acetate	ND	ND	200	µg/g	0.0	20	Acceptable	
Heptane	ND	ND	200	µg/g	0.0	20	Acceptable	
Butanol	ND	ND	500	µg/g	0.0	20	Acceptable	
Propyl Acetate	ND	ND	500	µg/g	0.0	20	Acceptable	
Dioxane	ND	ND	00	µg/g	0.0	20	Acceptable	
2 Ethoxyethanol	ND	ND	30	µg/g	0.0	20	Acceptable	
Methyl isobutyl ketone	ND	ND	500	µg/g	0.0	20	Acceptable	
3 Methyl butanol	ND	ND	500	µg/g	0.0	20	Acceptable	
Ethyl Glycol	ND	ND	200	µg/g	0.0	20	Acceptable	
o xylene	ND	ND	200	µg/g	0.0	20	Acceptable	
Isobutyl Acetate	ND	ND	500	µg/g	0.0	20	Acceptable	
Pentanol	ND	ND	500	µg/g	0.0	20	Acceptable	
Butyl Acetate	ND	ND	500	µg/g	0.0	20	Acceptable	
Ethyl benzene	ND	ND	200	µg/g	0.0	20	Acceptable	
m p Xylene	ND	ND	200	µg/g	0.0	20	Acceptable	
o Xylene	ND	ND	200	µg/g	0.0	20	Acceptable	
Cumene	ND	ND	30	µg/g	0.0	20	Acceptable	
Anisole	ND	ND	500	µg/g	0.0	20	Acceptable	
DMSO	ND	ND	500	µg/g	0.0	20	Acceptable	
2 d methoxyethane	ND	ND	50	µg/g	0.0	20	Acceptable	
riethylamine	ND	ND	500	µg/g	0.0	20	Acceptable	
N,N dimethylformamide	ND	ND	50	µg/g	0.0	20	Acceptable	
N,N dimethylacetamide	ND	ND	50	µg/g	0.0	20	Acceptable	
Pyridine	ND	ND	50	µg/g	0.0	20	Acceptable	
2 Dichloroethane	ND	ND	100	µg/g	0.0	20	Acceptable	
Chloroform	ND	ND	100	µg/g	0.0	20	Acceptable	
trichloroethylene	ND	ND	100	µg/g	0.0	20	Acceptable	

**Abbreviations**  
 ND None Detected at or above MRL  
 RPD Relative Percent Difference  
 LOQ Limit of Quantitation

**Units of Measure:**  
 µg/g Microgram per gram or ppm



12423 NE Whitaker Way  
 Portland, OR 97230  
 503-254-1794



**Report Number:** 22-002260/D005.R000  
**Report Date:** 03/09/2022  
**ORELAP#:** OR100028  
**Purchase Order:**  
**Received:** 02/28/22 14:02

Rev s o 3 Docume D 3 20  
 Legacy D C L C2 Wo ks ee Va da ed 0/30/2020

Laboratory Pesticide Quality Control Results

Method Blank	Units: mg/Kg		Laboratory Control Sample				Batch ID: 0	
Analyte	Blank Result	Blank Limits	Notes	LCS Result	LCS Spke	LCS % Re	Limits	Notes
Abamectin	0.000	< 0.250		1.011	1.000	101.1	77.0	122
Acephate	0.000	< 0.250		1.020	1.000	102.0	70.4	121
Acequinocyl	0.000	< 1.000		3.911	4.000	97.8	82.0	114
Acetamiprid	0.000	< 0.100		0.395	0.400	98.7	68.8	124
Aldicarb	0.000	< 0.200		0.797	0.800	99.7	72.5	125
Azoxystrobin	0.000	< 0.100		0.396	0.400	99.1	73.2	120
Bifenazate	0.000	< 0.100		0.405	0.400	101.4	75.1	140
Bifenthrin	0.000	< 0.100		0.393	0.400	98.2	74.5	117
Boscalid	0.000	< 0.200		0.774	0.800	96.8	72.7	123
Carbaryl	0.000	< 0.100		0.397	0.400	99.3	78.4	116
Carbofuran	0.000	< 0.100		0.394	0.400	98.5	79.5	116
Chlorantraniliprole	0.000	< 0.100		0.414	0.400	103.4	83.8	113
Chlorfenapyr	0.133	< 0.500		1.994	2.000	99.7	71.4	133
Chlorpyrifos	0.000	< 0.100		0.394	0.400	98.4	72.8	115
Clofentazine	0.000	< 0.100		0.381	0.400	95.3	79.0	112
Cyfluthrin	0.033	< 0.500		2.003	2.000	100.2	69.4	124
Cypermethrin	0.000	< 0.500		1.966	2.000	98.3	81.9	113
Daminozide	0.077	< 0.500		2.024	2.000	101.2	71.7	133
Diazinon	0.000	< 0.100		0.409	0.400	102.2	81.9	113
Dichlorvos	0.000	< 0.500		2.005	2.000	100.2	81.7	109
Dimethoate	0.000	< 0.100		0.393	0.400	98.2	82.6	111
Ethoprophos	0.000	< 0.100		0.395	0.400	98.7	79.0	114
Etofenprox	0.000	< 0.200		0.749	0.800	93.7	70.9	132
Etoxazole	0.000	< 0.100		0.400	0.400	100.0	77.7	123
Fenoxycarb	0.000	< 0.100		0.392	0.400	98.0	81.3	114
Fenpyroximate	0.000	< 0.200		0.769	0.800	96.1	81.3	114
Fipronil	0.000	< 0.200		0.791	0.800	98.9	81.9	120
Flonicamid	0.000	< 0.250		0.929	1.000	92.9	68.4	126
Fludioxonil	0.000	< 0.200		0.813	0.800	101.6	74.9	121
Hexythiazox	0.000	< 0.250		1.053	1.000	105.3	71.7	122
Imazalil	0.000	< 0.100		0.401	0.400	100.3	71.8	127
Imidacloprid	0.000	< 0.200		0.784	0.800	98.0	76.8	116
Kresoxim methyl	0.000	< 0.200		0.799	0.800	99.9	76.3	119
Malathion	0.000	< 0.100		0.386	0.400	96.5	73.3	125
Metaxyl	0.000	< 0.100		0.393	0.400	98.3	80.6	112
Methiocarb	0.000	< 0.100		0.386	0.400	96.4	79.1	117
Methomyl	0.000	< 0.200		0.756	0.800	94.5	65.2	121
MGK 264	0.000	< 0.100		0.368	0.400	92.1	76.3	118
Myclobutanil	0.000	< 0.100		0.396	0.400	99.1	75.9	121
Naled	0.000	< 0.250		0.990	1.000	99.0	84.2	107
Oxamyl	0.000	< 0.500		1.956	2.000	97.8	72.9	117
Paclobutrazole	0.000	< 0.200		0.765	0.800	95.6	79.8	116
Parathion Methyl	0.000	< 0.200		0.743	0.800	92.8	73.0	132
Permethrin	0.000	< 0.100		0.413	0.400	103.4	75.6	117
Phosmet	0.000	< 0.100		0.374	0.400	93.5	77.7	119
Piperonyl butoxide	0.000	< 0.500		2.004	2.000	100.2	70.5	131
Prallethrin	0.000	< 0.100		0.404	0.400	101.1	75.8	120
Propiconazole	0.000	< 0.200		0.780	0.800	97.5	80.4	116
Propoxur	0.000	< 0.100		0.385	0.400	96.2	80.0	113
Pyrethrin (Summe)	0.000	< 0.100		0.393	0.413	95.3	71.8	133
Pyridaben	0.000	< 0.100		0.377	0.400	94.2	73.6	124
Spinosad	0.000	< 0.100		0.370	0.388	95.4	72.8	135
Spiromesifen	0.000	< 0.100		0.389	0.400	97.4	76.7	127
Spirotetramat	0.000	< 0.100		0.392	0.400	97.9	81.4	115
Spiroxamine	0.000	< 0.200		0.744	0.800	93.0	79.7	109
ebuconazole	0.000	< 0.200		0.796	0.800	99.5	79.5	117
hiacloprid	0.000	< 0.100		0.391	0.400	97.8	79.5	115
hiamethoxam	0.000	< 0.100		0.379	0.400	94.7	67.1	125
rifloxystrobin	0.000	< 0.100		0.388	0.400	97.1	77.8	115





12423 NE Whitaker Way  
Portland, OR 97230  
503-254-1794



Report Number: 22-002260/D005.R000  
Report Date: 03/09/2022  
ORELAP#: OR100028  
Purchase Order:  
Received: 02/28/22 14:02

Rev s o 3 Docume D 3 20  
Legacy D C L C2 Wo ks ee Va da ed 0/30/2020

Laboratory Pesticide Quality Control Results

AQAC2007.1 & EN 15662		Units: mg/Kg					Batch ID: 0			
Matrix Spk/Matrix Spk Duplicate Recoveries	Sample ID: 22-0022600001									
Analyte	Result	MSR <sub>0.5</sub>	MSD <sub>0.5</sub>	Spike	RFD%	Limit	MS% Re	MSD % Re	Limits	Notes
Abamectin	0.000	0.621	0.986	1.000	45.4%	< 30	62.1%	98.6%	50 150	R
Acephate	0.000	1.001	1.027	1.000	2.6%	< 30	100.1%	102.7%	50 150	
Acequinocyl	0.000	2.711	3.067	4.000	12.3%	< 30	67.8%	76.7%	50 150	
Acetamiprid	0.000	0.398	0.409	0.400	2.6%	< 30	99.6%	102.2%	50 150	
Aldicarb	0.000	0.807	0.835	0.800	3.3%	< 30	100.9%	104.3%	50 150	
Azoxystrobin	0.000	0.374	0.385	0.400	2.9%	< 30	93.6%	96.3%	50 150	
Bifenazate	0.000	0.444	0.438	0.400	1.2%	< 30	111.0%	109.6%	50 150	
Bifenthrin	0.000	0.354	0.347	0.400	2.2%	< 30	88.6%	86.7%	50 150	
Boscalid	0.000	0.860	0.855	0.800	0.6%	< 30	107.4%	106.8%	50 150	
Carbaryl	0.000	0.380	0.390	0.400	2.7%	< 30	94.9%	97.6%	50 150	
Carbofuran	0.000	0.365	0.380	0.400	4.2%	< 30	91.1%	95.1%	50 150	
Chlorantraniliprole	0.000	0.411	0.431	0.400	4.6%	< 30	102.8%	107.7%	50 150	
Chlorfenapyr	0.138	1.566	1.767	2.000	13.1%	< 30	71.4%	81.5%	50 150	
Chlorpyrifos	0.000	0.388	0.388	0.400	0.1%	< 30	97.0%	97.1%	50 150	
Clofentezine	0.000	0.377	0.379	0.400	0.7%	< 30	94.2%	94.8%	50 150	
Cyfluthrin	0.000	1.532	1.809	2.000	16.5%	< 30	76.6%	90.4%	30 150	
Cypermethrin	0.000	1.566	1.664	2.000	6.1%	< 30	78.3%	83.2%	50 150	
Daminozide	0.072	1.511	1.451	2.000	4.3%	< 30	71.9%	68.9%	30 150	
Diazinon	0.000	0.404	0.411	0.400	1.6%	< 30	101.1%	102.7%	50 150	
Dichlorvos	0.000	1.913	1.967	2.000	2.8%	< 30	95.7%	98.3%	50 150	
Dimethoate	0.000	0.402	0.404	0.400	0.5%	< 30	100.5%	101.0%	50 150	
Ethoprophos	0.000	0.428	0.448	0.400	4.4%	< 30	107.1%	111.9%	50 150	
Etofenprox	0.000	0.629	0.627	0.800	0.3%	< 30	78.7%	78.4%	50 150	
Etoxazole	0.000	0.387	0.365	0.400	5.8%	< 30	96.6%	91.2%	50 150	
Fenoxycarb	0.000	0.380	0.397	0.400	4.6%	< 30	94.9%	99.4%	50 150	
Fenpyroximate	0.000	0.790	0.782	0.800	1.0%	< 30	98.7%	97.8%	50 150	
Fipronil	0.000	0.719	0.741	0.800	3.0%	< 30	89.9%	92.6%	50 150	
Flonicamid	0.000	1.006	1.106	1.000	9.5%	< 30	100.6%	110.6%	50 150	
Fludioxonil	0.000	0.890	0.865	0.800	2.7%	< 30	111.2%	108.2%	50 150	
Hexythiazox	0.000	0.382	0.398	1.000	4.1%	< 30	38.2%	39.8%	50 150	Q
Imazalil	0.000	0.389	0.407	0.400	4.7%	< 30	97.1%	101.8%	50 150	
Imidacloprid	0.000	0.783	0.817	0.800	4.1%	< 30	97.9%	102.1%	50 150	
Kresoxim methyl	0.000	0.720	0.773	0.800	7.1%	< 30	90.0%	96.7%	50 150	
Malathion	0.000	0.405	0.409	0.400	1.1%	< 30	101.1%	102.3%	50 150	
Metaxyl	0.000	0.396	0.397	0.400	0.3%	< 30	99.0%	99.3%	50 150	
Methiocarb	0.000	0.389	0.404	0.400	3.6%	< 30	97.4%	100.9%	50 150	
Methomyl	0.000	0.789	0.843	0.800	6.7%	< 30	98.6%	105.4%	50 150	
MGK 264	0.000	0.349	0.362	0.400	3.7%	< 30	87.2%	90.5%	50 150	
Myclobutanil	0.000	0.390	0.387	0.400	0.9%	< 30	97.6%	96.8%	50 150	
Naled	0.000	0.883	0.915	1.000	3.5%	< 30	88.3%	91.5%	50 150	
Oxamyl	0.000	2.070	1.992	2.000	3.9%	< 30	103.5%	99.6%	50 150	
Paclobutrazole	0.000	0.775	0.789	0.800	1.8%	< 30	96.9%	98.7%	50 150	
Parathion Methyl	0.000	0.880	0.851	0.800	3.4%	< 30	110.0%	106.4%	30 150	
Permethrin	0.000	0.355	0.409	0.400	14.2%	< 30	88.7%	102.3%	50 150	
Phosmet	0.000	0.367	0.397	0.400	8.0%	< 30	91.6%	99.3%	50 150	
Piperonyl butoxide	0.000	1.936	1.934	2.000	0.1%	< 30	96.8%	96.7%	50 150	
Prallethrin	0.000	0.237	0.222	0.400	6.9%	< 30	59.4%	55.4%	50 150	
Propiconazole	0.000	0.792	0.816	0.800	3.0%	< 30	98.9%	102.0%	50 150	
Propoxur	0.000	0.378	0.381	0.400	0.9%	< 30	94.5%	95.3%	50 150	
Pyrethrin (Summe)	0.000	0.449	0.416	0.413	7.5%	< 30	108.6%	100.7%	50 150	
Pyridaben	0.000	0.251	0.260	0.400	3.5%	< 30	62.8%	65.0%	50 150	
Spinosad	0.000	0.376	0.383	0.388	2.0%	< 30	96.8%	98.8%	50 150	
Spiromesifen	0.000	0.495	0.466	0.400	6.1%	< 30	123.9%	116.5%	50 150	
Spirotetramat	0.000	0.423	0.437	0.400	3.4%	< 30	105.6%	109.3%	50 150	
Spiroxamine	0.000	0.771	0.792	0.800	2.7%	< 30	96.4%	99.0%	50 150	
ebuconazole	0.000	0.834	0.834	0.800	0.1%	< 30	104.3%	104.2%	50 150	
hiacloprid	0.000	0.395	0.408	0.400	3.3%	< 30	98.7%	102.1%	50 150	
hiamethoxam	0.000	0.405	0.441	0.400	8.6%	< 30	101.2%	110.2%	50 150	
rifloxystrobin	0.000	0.392	0.391	0.400	0.2%	< 30	98.0%	97.8%	50 150	



12423 NE Whitaker Way  
 Portland, OR 97230  
 503-254-1794

**Report Number:** 22-002260/D005.R000  
**Report Date:** 03/09/2022  
**ORELAP#:** OR100028  
**Purchase Order:**  
**Received:** 02/28/22 14:02



Revision: 1 Document ID: 7086  
 Legacy ID: CFL-E57Worksheet Validated 11/04/2020

Terpenes Quality Control Results

Method Reference: EP/5035				Batch D: 2202040					
Method Blank				Laboratory Control Sample					
Analyte	Result	LOQ	Notes	Result	LCS	Units	LCS % Rec	Limits	Notes
a-pinene	<LOQ	< 200		362	500	µg/g	72%	70 - 130	
Camphene	<LOQ	< 200		372	500	µg/g	74%	70 - 130	
Sabinene	<LOQ	< 200		387	500	µg/g	77%	70 - 130	
b-Pinene	<LOQ	< 200		384	500	µg/g	77%	70 - 130	
b-Myrcene	<LOQ	< 200		414	500	µg/g	83%	70 - 130	
a-phellandrene	<LOQ	< 200		376	500	µg/g	75%	70 - 130	
d-3-Caene	<LOQ	< 200		381	500	µg/g	76%	70 - 130	
a-Terpinene	<LOQ	< 200		379	500	µg/g	76%	70 - 130	
p-Cymene	<LOQ	< 200		368	500	µg/g	74%	70 - 130	
D-Limonene	<LOQ	< 200		365	500	µg/g	73%	70 - 130	
Eucalyptol	<LOQ	< 200		363	500	µg/g	73%	70 - 130	
b-α-Cimene	<LOQ	< 67		130	167	µg/g	78%	70 - 130	
b-trans-Cimene	<LOQ	< 133		244	333	µg/g	73%	70 - 130	
g-Terpinene	<LOQ	< 200		385	500	µg/g	77%	70 - 130	
Sabinene Hydrate	<LOQ	< 200		361	500	µg/g	72%	70 - 130	
Terpinolene	<LOQ	< 200		366	500	µg/g	73%	70 - 130	
D-Fenchone	<LOQ	< 200		356	500	µg/g	71%	70 - 130	
Linalool	<LOQ	< 200		383	500	µg/g	77%	70 - 130	
Fenchol	<LOQ	< 200		353	500	µg/g	71%	70 - 130	
Camphor	<LOQ	< 200		384	500	µg/g	77%	70 - 130	
Isopuleg	<LOQ	< 200		391	500	µg/g	78%	70 - 130	
Isborneol	<LOQ	< 200		409	500	µg/g	82%	70 - 130	
Borneol	<LOQ	< 200		363	500	µg/g	73%	70 - 130	
DL-Menthol	<LOQ	< 200		398	500	µg/g	80%	70 - 130	
Terpineol	<LOQ	< 200		314	500	µg/g	63%	70 - 130	Q
Nerol	<LOQ	< 200		357	500	µg/g	71%	70 - 130	
Pulegone	<LOQ	< 200		357	500	µg/g	71%	70 - 130	
Geraniol	<LOQ	< 200		383	500	µg/g	77%	70 - 130	
Geranyl Acetate	<LOQ	< 200		412	500	µg/g	82%	70 - 130	
α-Cedrene	<LOQ	< 200		355	500	µg/g	71%	70 - 130	
b-Caryophyllene	<LOQ	< 200		401	500	µg/g	80%	70 - 130	
α-Humulene	<LOQ	< 200		356	500	µg/g	71%	70 - 130	
Valenene	<LOQ	< 200		394	500	µg/g	79%	70 - 130	
cis-Nerolidol	<LOQ	< 200		420	500	µg/g	84%	70 - 130	
α-Farnesene	<LOQ	< 200		389	500	µg/g	78%	70 - 130	
trans-Nerolidol	<LOQ	< 200		380	500	µg/g	76%	70 - 130	
Caryophyllene Oxide	<LOQ	< 200		530	500	µg/g	106%	70 - 130	
Guaiol	<LOQ	< 200		414	500	µg/g	83%	70 - 130	
Cedrol	<LOQ	< 200		443	500	µg/g	89%	70 - 130	
α-Bisabolol	<LOQ	< 200		444	500	µg/g	89%	70 - 130	

Definitions

LOQ	Limit of Quantitation
LCS	Laboratory Control Sample
%REC	Percent Recovery
Q	Matrix interference affecting spike or surrogate recoveries.



12423 NE Whitaker Way  
 Portland, OR 97230  
 503-254-1794

**Report Number:** 22-002260/D005.R000  
**Report Date:** 03/09/2022  
**ORELAP#:** OR100028  
**Purchase Order:**  
**Received:** 02/28/22 14:02



Revision: 1 Document ID: 7086  
 Legacy ID: CFL-E57Worksheet Validated 11/04/2020

Terpenes Quality Control Results

Method Reference: EPA5035		Batch D: 2202040					
Sample/Sample Duplicate		Sample D: 22-002417-0001					
Analyte	Result	Org. Result	LOQ	Units	% RPD	LIMIT	Notes
a-pinene	2930	2840	188	µg/g	3%	< 20	
Camphene	363	350	188	µg/g	4%	< 20	
Sabinene	1140	1090	188	µg/g	4%	< 20	
b-Pinene	537	513	188	µg/g	5%	< 20	
b-Myrcene	598	592	188	µg/g	1%	< 20	
a-phellandrene	217	220	188	µg/g	1%	< 20	
d-3-Caene	<LOQ	<LOQ	188	µg/g	0%	< 20	
a-Terpinene	634	644	188	µg/g	2%	< 20	
p-Cymene	2150	2070	188	µg/g	4%	< 20	
D-Limonene	8120	8010	188	µg/g	1%	< 20	
Eucalyptol	10600	10400	188	µg/g	2%	< 20	
b-cis-OCimene	<LOQ	<LOQ	62.7	µg/g	0%	< 20	
b-trans-OCimene	<LOQ	<LOQ	125	µg/g	0%	< 20	
g-Terpinene	870	870	188	µg/g	0%	< 20	
Sabinene Hydrate	<LOQ	<LOQ	188	µg/g	0%	< 20	
Terpinolene	<LOQ	<LOQ	188	µg/g	0%	< 20	
D-Fenchone	<LOQ	<LOQ	188	µg/g	0%	< 20	
Linalool	2890	2790	188	µg/g	4%	< 20	
Fenchol	<LOQ	<LOQ	188	µg/g	0%	< 20	
Camphor	<LOQ	<LOQ	188	µg/g	0%	< 20	
Isopuleg	<LOQ	<LOQ	188	µg/g	0%	< 20	
Isborneol	<LOQ	<LOQ	188	µg/g	0%	< 20	
Borneol	<LOQ	<LOQ	188	µg/g	0%	< 20	
DL-Menthol	45800	44300	188	µg/g	3%	< 20	
Terpineol	<LOQ	<LOQ	188	µg/g	0%	< 20	
Nerol	<LOQ	<LOQ	188	µg/g	0%	< 20	
Rulegone	<LOQ	<LOQ	188	µg/g	0%	< 20	
Geraniol	<LOQ	<LOQ	188	µg/g	0%	< 20	
Geranyl_Acetate	<LOQ	<LOQ	188	µg/g	0%	< 20	
a-Cedrene	<LOQ	<LOQ	188	µg/g	0%	< 20	
b-Caryophyllene	<LOQ	<LOQ	188	µg/g	0%	< 20	
a-Humulene	<LOQ	<LOQ	188	µg/g	0%	< 20	
Valenene	<LOQ	<LOQ	188	µg/g	0%	< 20	
cis-Nerolidol	<LOQ	<LOQ	188	µg/g	0%	< 20	
a-Farnesene	<LOQ	<LOQ	188	µg/g	0%	< 20	
trans-Nerolidol	<LOQ	<LOQ	188	µg/g	0%	< 20	
Caryophyllene_Oxide	<LOQ	<LOQ	188	µg/g	0%	< 20	
Guaiol	<LOQ	<LOQ	188	µg/g	0%	< 20	
Cedrol	<LOQ	<LOQ	188	µg/g	0%	< 20	
a-Bisabol	400	385	188	µg/g	4%	< 20	

Definitions

RPD Relative Percent Difference



12423 NE Whitaker Way  
 Portland, OR 97230  
 503-254-1794



**Report Number:** 22-002260/D005.R000  
**Report Date:** 03/09/2022  
**ORELAP#:** OR100028  
**Purchase Order:**  
**Received:** 02/28/22 14:02

Explanation of QC Flag Comments:

Code	Explanation
Q	Matrix interferences affecting spike or surrogate recoveries.
Q1	Quality control result biased high. Only non-detect samples reported.
Q2	Quality control outside QC limits. Data considered estimate.
Q3	Sample concentration greater than four times the amount spiked.
Q4	Non-homogenous sample matrix, affecting RPD result and/or % recoveries.
Q5	Spike results above calibration curve.
Q6	Quality control outside QC limits. Data acceptable based on remaining QC.
R	Relative percent difference (RPD) outside control limit.
R1	RPD non-calculable, as sample or duplicate results are less than five times the LOQ.
R2	Sample replicates RPD non-calculable, as only one replicate is within the analytical range.
LOQ1	Quantitation level raised due to low sample volume and/or dilution.
LOQ2	Quantitation level raised due to matrix interference.
B	Analyte detected in method blank, but not in associated samples.
B1	The sample concentration is greater than 5 times the blank concentration.
B2	The sample concentration is less than 5 times the blank concentration.



12423 NE Whitaker Way  
Portland, OR 97230  
503-254-1794



**Report Number:** 22-002260/D004.R000  
**Report Date:** 03/09/2022  
**ORELAP#:** OR100028  
**Purchase Order:**  
**Received:** 02/28/22 14:02

**Customer:** Etz Hayim Holdings  
**Product identity:** EB21-TN.O.FS.CM50  
**Client/Metric ID:** .  
**Laboratory ID:** 22-002260-0002

### Summary

-----  
**Microbiology:**

Less than LOQ for all analytes.





12423 NE Whitaker Way  
 Portland, OR 97230  
 503-254-1794



**Report Number:** 22-002260/D004.R000  
**Report Date:** 03/09/2022  
**ORELAP#:** OR100028  
**Purchase Order:**  
**Received:** 02/28/22 14:02

**Customer:** Etz Hayim Holdings  
 16427 NE Airport Way  
 PORTLAND 97230  
 United States of America (USA)

**Product identity:** EB21-TN.O.FS.CM50

**Client/Metric ID:** .

**Sample Date:**

**Laboratory ID:** 22-002260-0002

**Evidence of Cooling:** No

**Temp:** 20.6 °C

**Relinquished by:** Client

### Sample Results

#### Microbiology

Analyte	Result	Limits	Units	LOQ	Batch	Analyze	Method	Status	Notes
E.coli	< LOQ		cfu/g	10	2201886	03/06/22	AOAC 991.14 (Petrifilm)	X, I	
Total Coliforms	< LOQ		cfu/g	10	2201886	03/06/22	AOAC 991.14 (Petrifilm)	X, I	
Mold (RAPID Petrifilm)	< LOQ		cfu/g	10	2201887	03/07/22	AOAC 2014.05 (RAPID)	X, I	
Yeast (RAPID Petrifilm)	< LOQ		cfu/g	10	2201887	03/07/22	AOAC 2014.05 (RAPID)	X, I	



12423 NE Whitaker Way  
Portland, OR 97230  
503-254-1794



**Report Number:** 22-002260/D004.R000  
**Report Date:** 03/09/2022  
**ORELAP#:** OR100028  
**Purchase Order:**  
**Received:** 02/28/22 14:02

These test results are representative of the individual sample selected and submitted by the client.

**Abbreviations**

**Limits:** Action Levels per OAR-333-007-0400, OAR-333-007-0210, OAR-333-007-0220, CCR title 16-division 42. BCC-section 5723

**Limit(s) of Quantitation (LOQ):** The minimum levels, concentrations, or quantities of a target variable (e.g., target analyte) that can be reported with a specified degree of confidence.

**Units of Measure**

cfu/g = Colony forming units per gram

% wt = µg/g divided by 10,000

**Glossary of Qualifiers**

I: Insufficient sample received to meet method requirements.

X: Not ORELAP accredited.

Approved Signatory

Derrick Tanner  
General Manager



12423 NE Whitaker Way  
Portland, OR 97230  
503-254-1794



Report Number: 22-002260/D004.R000  
Report Date: 03/09/2022  
ORELAP#: OR100028  
Purchase Order:  
Received: 02/28/22 14:02



12423 NE Whitaker Way Portland OR 97230 p.503-254-1794

**Cannabis Chain of Custody Record**

ORELAP ID: OR100028

Field ID		Date/Time Collected		Analysis Requested										Matrix			Weight	Serving size for edibles	Comments/Metric ID	
				Pesticides - OR 59 compounds	Pesticide Multi-Residue - 379 compounds	Potency	Residual Solvents	Water Activity	Moisture	Terpenes	Micro: Yeast and Mold	Micro: E. Coli and Total Coliform	Heavy Metals	Mycotoxins	Other					
[Redacted]		[Redacted]				X										Liquid TN.				LAZ. NAT Discour
EB21-TN.D.FS.CMSD		2/14/22 5P					X				X	X	X	X						potency 1st
EB21-TN.D.FS.CMSD		2/14/22 5P		X			X			X	X	X	X							

Purchase Order Number:  
Project Number:  
Project Name:  
 Report Instructions:  
 Send to State - METRC  
 Email Final Results:  
 Fax Final Results  
 Cash/Check/CC/Net 30  
Other:

Collected By:	Relinquished By:	Date:	Time:	Received by:	Date:	Time:	Lab Use Only:
[Redacted]	[Redacted]	[Redacted]	[Redacted]	[Redacted]	[Redacted]	[Redacted]	Client Alias: Order Number: Proper Container Sample Condition Temperature: 20.6 Shipped Via: <i>Lowie</i> Evidence of cooling: <input type="checkbox"/> Yes <input checked="" type="checkbox"/> No

SUBMISSION OF SAMPLES WITH TESTING REQUIREMENTS TO PIXIS WILL BE UNDERSTOOD TO BE AN AGREEMENT FOR SERVICES IN ACCORDANCE WITH THE CONDITIONS LISTED ON THE BACK OF THIS FORM

Revision: 1.02 Control#: CF023  
Effective 01/31/2019 Revised 01/31/2019

www.pixislabs.com

Page 1 of 2



12423 NE Whitaker Way  
Portland, OR 97230  
503-254-1794



**Report Number:** 22-002260/D004.R000  
**Report Date:** 03/09/2022  
**ORELAP#:** OR100028  
**Purchase Order:**  
**Received:** 02/28/22 14:02

Explanation of QC Flag Comments:

Code	Explanation
Q	Matrix interferences affecting spike or surrogate recoveries.
Q1	Quality control result biased high. Only non-detect samples reported.
Q2	Quality control outside QC limits. Data considered estimate.
Q3	Sample concentration greater than four times the amount spiked.
Q4	Non-homogenous sample matrix, affecting RPD result and/or % recoveries.
Q5	Spike results above calibration curve.
Q6	Quality control outside QC limits. Data acceptable based on remaining QC.
R	Relative percent difference (RPD) outside control limit.
R1	RPD non-calculable, as sample or duplicate results are less than five times the LOQ.
R2	Sample replicates RPD non-calculable, as only one replicate is within the analytical range.
LOQ1	Quantitation level raised due to low sample volume and/or dilution.
LOQ2	Quantitation level raised due to matrix interference.
B	Analyte detected in method blank, but not in associated samples.
B1	The sample concentration is greater than 5 times the blank concentration.
B2	The sample concentration is less than 5 times the blank concentration.