

CONSOLIDATED TEST RESULTS SUMMARY

Please see the following pages for full test results.

BULK SKU TN.O.FS.CM50

BATCH # EB21

PRODUCT NAME Full Spectrum, High Potency Chocolate Mint Tincture

SERVING SIZE 1 mL

LABORATORY: Columbia Laboratories

OREGON ACCREDITATION: OR100028

LOQ: Limit Of Quantitation

LOD: Limit Of Detection

1 g = 10⁻³ kg = 10³ mg = 10⁶

µg 1 mg/kg = 1 ppm = 1000 ppb

POTENCY	PER SERVING	PER GRAM	Percent
Cannabidiol (CBD)	53.5 mg/serving	56.3 mg/g	5.63 %
Total THC (d9-THC, THCA)	1.88 mg/serving	1.98 mg/g	0.198 %
Cannabigerol (CBG)	1.11 mg/serving	1.17 mg/g	0.117 %
Cannabinol (CBN)	0.0333 mg/serving	0.0351 mg/g	0.0035 %
Cannabichromene (CBC)	2.14 mg/serving	2.25 mg/g	0.225 %
Tetrahydrocannabinolic Acid (THCA)	<LOQ mg/serving	<LOQ mg/g	<LOQ %
Delta-9-THC (d9-THC)	1.88 mg/serving	1.98 mg/g	0.198 %
Delta-8-THC (d8-THC)	<LOQ mg/serving	<LOQ mg/g	<LOQ %

HEAVY METALS	PER SERVING	PER GRAM	REGULATORY ACTION LEVEL
Arsenic	<LOQ µg/serving	<LOQ µg/g	10 µg/day ^[1]
Cadmium	<LOQ µg/serving	<LOQ µg/g	4.1 µg/day ^[1]
Lead	<LOQ µg/serving	<LOQ µg/g	3.5 µg/day ^[2]
Mercury	<LOQ µg/serving	<LOQ µg/g	2 µg/day ^[1]

PESTICIDES	REGULATORY ACTION LEVEL
None of the other 59 pesticides tested found above limit of detection in the sample.	10 ppb ^[1]

RESIDUAL SOLVENTS	Results	REGULATORY ACTION LEVEL
Ethanol	<LOQ	50,000 mg/day
Heptane	<LOQ	50,000 mg/day
None of the 34 residual solvents tested found above limit of quantitation in the sample.		

MICROBIAL	PASS/FAIL
Yeast & Mold	Pass
Coliform	Pass

TERPENES	% OF SAMPLE
Farnesene	0.110 %
β-Caryophyllene	0.0904 %
α-Bisabolol	0.0621 %
Guaiol	<LOQ %
Humulene	0.0355 %
Caryophyllene Oxide	0.0294 %



1. American Herbal Pharmacopoeia. (2014). Cannabis Inflorescence: Standards of Identity, Analysis, and Quality Control. Washington DC: AHP.

2. US Food and Drug Administration. (2019). Lead in Food, Foodwares, and Dietary Supplements. Washington DC: FDA. US Food and Drug Administration. (2019). Lead in Food, Foodwares, and Dietary Supplements. Washington DC: FDA.



12423 NE Whitaker Way
 Portland, OR 97230
 503-254-1794



Report Number: 22-002260/D005.R000
Report Date: 03/09/2022
ORELAP#: OR100028
Purchase Order:
Received: 02/28/22 14:02

Customer: Etz Hayim Holdings
Product identity: EB21-TN.O.FS.CM50
Client/Metric ID: .
Laboratory ID: 22-002260-0001

Summary

Potency:

Analyte per 1ml	Result	Limits	Units	Status	
CBC per 1ml [†]	2.14		mg/1ml		CBD Total per 1ml 53.5 mg/1ml
CBD per 1ml	53.5		mg/1ml		
CBDV per 1ml [†]	0.216		mg/1ml		THC-Total per 1ml 1.88 mg/1ml
CBE per 1ml [†]	0.682		mg/1ml		
CBG per 1ml [†]	1.11		mg/1ml		(Reported in milligrams per serving)
CBN per 1ml	0.0333		mg/1ml		
CBT per 1ml [†]	1.29		mg/1ml		
Δ ⁹ THC per 1ml	1.88		mg/1ml		

Residual Solvents:

All analytes passing and less than LOQ.

Pesticides:

All analytes passing and less than LOQ.

Terpenes:

Analyte	Percent by weight	Percent of Total	Analyte	Percent by weight	Percent of Total
farnesene [†]	0.110	26.89%	β-Caryophyllene [†]	0.0904	22.10%
α-Bisabolol [†]	0.0621	15.18%	Humulene [†]	0.0355	8.68%
(-)-Isopulegol [†]	0.0345	8.44%	(-)-caryophyllene oxide [†]	0.0294	7.19%
β-Myrcene [†]	0.0248	6.06%	Menthol [†]	0.0225	5.50%
Total Terpenes[†]	0.409	100.00%			

Metals:

Less than LOQ for all analytes.



12423 NE Whitaker Way
Portland, OR 97230
503-254-1794

Report Number: 22-002260/D005.R000
Report Date: 03/09/2022
ORELAP#: OR100028
Purchase Order:
Received: 02/28/22 14:02



Customer: Etz Hayim Holdings
16427 NE Airport Way
PORTLAND 97230
United States of America (USA)

Product identity: EB21-TN.O.FS.CM50

Client/Metric ID: .

Sample Date:

Laboratory ID: 22-002260-0001

Evidence of Cooling: No

Temp: 20.6 °C

Relinquished by: Client

Serving Size #1: 0.95 g

Density: 0.9500 g/ml

Sample Results

Potency per 1ml	Method J AOAC 2015 V98-6 (mod)	Units mg/se	Batch: 2201832	Analyze: 3/2/22 1:18:00 PM	
Analyte	Result	Limits	Units	LOQ	Notes
CBC per 1ml [†]	2.14		mg/1ml	0.0307	
CBC-A per 1ml [†]	< LOQ		mg/1ml	0.0307	
CBC-Total per 1ml [†]	2.14		mg/1ml	0.0577	
CBD per 1ml	53.5		mg/1ml	0.307	
CBD-A per 1ml	< LOQ		mg/1ml	0.0307	
CBD-Total per 1ml	53.5		mg/1ml	0.334	
CBDV per 1ml [†]	0.216		mg/1ml	0.0307	
CBDV-A per 1ml [†]	< LOQ		mg/1ml	0.0307	
CBDV-Total per 1ml [†]	0.216		mg/1ml	0.0574	
CBE per 1ml [†]	0.682		mg/1ml	0.0307	
CBG per 1ml [†]	1.11		mg/1ml	0.0307	
CBG-A per 1ml [†]	< LOQ		mg/1ml	0.0307	
CBG-Total per 1ml [†]	1.11		mg/1ml	0.0574	
CBL per 1ml [†]	< LOQ		mg/1ml	0.0307	
CBL-A per 1ml [†]	< LOQ		mg/1ml	0.0307	
CBL-Total per 1ml [†]	< LOQ		mg/1ml	0.0577	
CBN per 1ml	0.0333		mg/1ml	0.0307	
CBT per 1ml [†]	1.29		mg/1ml	0.0307	
Δ8-THCV per 1ml [†]	< LOQ		mg/1ml	0.0307	
Δ8-THC per 1ml [†]	< LOQ		mg/1ml	0.0307	
Δ9-THC per 1ml	1.88		mg/1ml	0.0307	
exo-THC per 1ml [†]	< LOQ		mg/1ml	0.0307	
THC-A per 1ml	< LOQ		mg/1ml	0.0307	
THC-Total per 1ml	1.88		mg/1ml	0.0577	
THCV per 1ml [†]	< LOQ		mg/1ml	0.0307	
THCV-A per 1ml [†]	< LOQ		mg/1ml	0.0307	
THCV-Total per 1ml [†]	< LOQ		mg/1ml	0.0577	
Total Cannabinoids per 1ml	60.8		mg/1ml		



12423 NE Whitaker Way
 Portland, OR 97230
 503-254-1794



Report Number: 22-002260/D005.R000
Report Date: 03/09/2022
ORELAP#: OR100028
Purchase Order:
Received: 02/28/22 14:02

Solvents						Residual Solvents by GC/MS						Batch 2201996						Analyze 03/08/22 10:29 AM					
Analyte	Result	Limits	LOQ	Status	Notes	Analyte	Result	Limits	LOQ	Status	Notes	Analyte	Result	Limits	LOQ	Status	Notes	Analyte	Result	Limits	LOQ	Status	Notes
1,4-Dioxane	< LOQ	380	100	pass		2-Butanol	< LOQ	5000	200	pass		2-Butanol	< LOQ	5000	200	pass		2-Butanol	< LOQ	5000	200	pass	
2-Ethoxyethanol	< LOQ	160	30.0	pass		2-Methylbutane (Isopentane)	< LOQ					2-Methylbutane (Isopentane)	< LOQ					2-Methylbutane (Isopentane)	< LOQ				
2-Methylpentane	< LOQ		30.0			2-Propanol (IPA)	< LOQ	5000	200	pass		2-Propanol (IPA)	< LOQ	5000	200	pass		2-Propanol (IPA)	< LOQ	5000	200	pass	
2,2-Dimethyl butane	< LOQ		30.0			2,2-Dimethylpropane (neo-pentane)	< LOQ					2,2-Dimethylpropane (neo-pentane)	< LOQ					2,2-Dimethylpropane (neo-pentane)	< LOQ				
2,3-Dimethyl butane	< LOQ		30.0			3-Methylpentane	< LOQ					3-Methylpentane	< LOQ		30.0			3-Methylpentane	< LOQ				
Acetone	< LOQ	5000	200	pass		Acetonitrile	< LOQ	410	100	pass		Acetonitrile	< LOQ	410	100	pass		Acetonitrile	< LOQ	410	100	pass	
Benzene	< LOQ	2.00	1.00	pass		Butanes (sum)	< LOQ	5000	400	pass		Butanes (sum)	< LOQ	5000	400	pass		Butanes (sum)	< LOQ	5000	400	pass	
Cyclohexane	< LOQ	3880	200	pass		Ethanol ^l	< LOQ					Ethanol ^l	< LOQ		200			Ethanol ^l	< LOQ				
Ethyl acetate	< LOQ	5000	200	pass		Ethyl benzene	< LOQ					Ethyl benzene	< LOQ		200			Ethyl benzene	< LOQ				
Ethyl ether	< LOQ	5000	200	pass		Ethylene glycol	< LOQ	620	200	pass		Ethylene glycol	< LOQ	620	200	pass		Ethylene glycol	< LOQ	620	200	pass	
Ethylene oxide	< LOQ	50.0	20.0	pass		Hexanes (sum)	< LOQ	290	150	pass		Hexanes (sum)	< LOQ	290	150	pass		Hexanes (sum)	< LOQ	290	150	pass	
Isopropyl acetate	< LOQ	5000	200	pass		Isopropylbenzene (Cumene)	< LOQ	70.0	30.0	pass		Isopropylbenzene (Cumene)	< LOQ	70.0	30.0	pass		Isopropylbenzene (Cumene)	< LOQ	70.0	30.0	pass	
m,p-Xylene	< LOQ		200			Methanol	< LOQ	3000	200	pass		Methanol	< LOQ	3000	200	pass		Methanol	< LOQ	3000	200	pass	
Methylene chloride	< LOQ	600	60.0	pass		Methylpropane (Isobutane)	< LOQ					Methylpropane (Isobutane)	< LOQ		200			Methylpropane (Isobutane)	< LOQ				
n-Butane	< LOQ		200			n-Heptane	< LOQ	5000	200	pass		n-Heptane	< LOQ	5000	200	pass		n-Heptane	< LOQ	5000	200	pass	
n-Hexane	< LOQ		30.0			n-Pentane	< LOQ					n-Pentane	< LOQ		200			n-Pentane	< LOQ				
o-Xylene	< LOQ		200			Pentanes (sum)	< LOQ	5000	600	pass		Pentanes (sum)	< LOQ	5000	600	pass		Pentanes (sum)	< LOQ	5000	600	pass	
Propane	< LOQ	5000	200	pass		Tetrahydrofuran	< LOQ	720	100	pass		Tetrahydrofuran	< LOQ	720	100	pass		Tetrahydrofuran	< LOQ	720	100	pass	
Toluene	< LOQ	890	100	pass		Total Xylenes	< LOQ					Total Xylenes	< LOQ		400			Total Xylenes	< LOQ				
Total Xylenes and Ethyl benzene	< LOQ	2170	600	pass																			



12423 NE Whitaker Way
 Portland, OR 97230
 503-254-1794

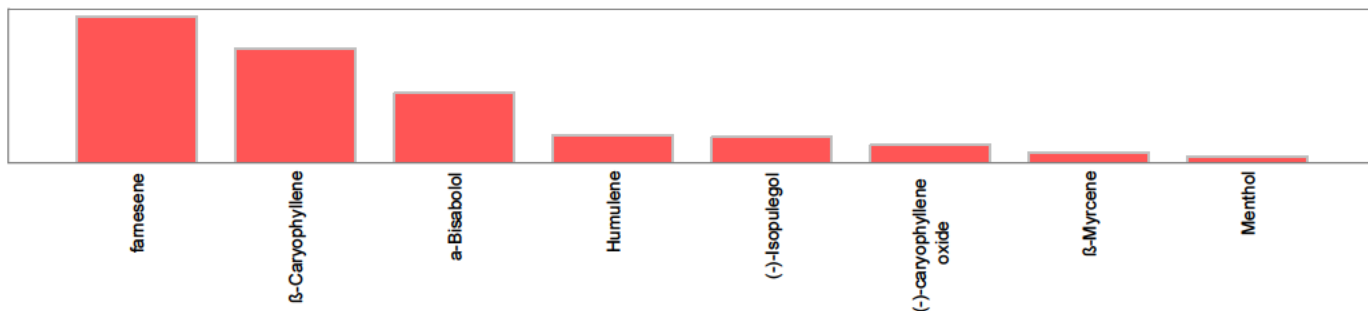


Report Number: 22-002260/D005.R000
Report Date: 03/09/2022
ORELAP#: OR100028
Purchase Order:
Received: 02/28/22 14:02

Pesticides											
Method AOAC 2007.01 & EN 15662 (mod) Units mg/kg Batch 2202028 Analyze 03/09/22 08:57 AM											
Analyte	Result	Limits	LOQ	Status	Notes	Analyte	Result	Limits	LOQ	Status	Notes
Abamectin	< LOQ	0.50	0.250	pass		Acephate	< LOQ	0.40	0.250	pass	
Acequinocyl	< LOQ	2.0	1.00	pass		Acetamiprid	< LOQ	0.20	0.100	pass	
Aldicarb	< LOQ	0.40	0.200	pass		Azoxystrobin	< LOQ	0.20	0.100	pass	
Bifenazate	< LOQ	0.20	0.100	pass		Bifenthrin	< LOQ	0.20	0.100	pass	
Boscalid	< LOQ	0.40	0.200	pass		Carbaryl	< LOQ	0.20	0.100	pass	
Carbofuran	< LOQ	0.20	0.100	pass		Chlorantraniliprole	< LOQ	0.20	0.100	pass	
Chlorfenapyr	< LOQ	1.0	0.500	pass		Chlorpyrifos	< LOQ	0.20	0.100	pass	
Clofentezine	< LOQ	0.20	0.100	pass		Cyfluthrin	< LOQ	1.0	0.500	pass	
Cypermethrin	< LOQ	1.0	0.500	pass		Daminozide	< LOQ	1.0	0.500	pass	
Diazinon	< LOQ	0.20	0.100	pass		Dichlorvos	< LOQ	1.0	0.500	pass	
Dimethoate	< LOQ	0.20	0.100	pass		Ethoprophos	< LOQ	0.20	0.100	pass	
Etofenprox	< LOQ	0.40	0.200	pass		Etoxazole	< LOQ	0.20	0.100	pass	
Fenoxycarb	< LOQ	0.20	0.100	pass		Fenpyroximate	< LOQ	0.40	0.200	pass	
Fipronil	< LOQ	0.40	0.200	pass		Fonicamid	< LOQ	1.0	0.400	pass	
Fludioxonil	< LOQ	0.40	0.200	pass		Hexythiazox	< LOQ	1.0	0.400	pass	
Imazalil	< LOQ	0.20	0.100	pass		Imidacloprid	< LOQ	0.40	0.200	pass	
Kresoxim-methyl	< LOQ	0.40	0.200	pass		Malathion	< LOQ	0.20	0.100	pass	
Metalaxyl	< LOQ	0.20	0.100	pass		Methiocarb	< LOQ	0.20	0.100	pass	
Methomyl	< LOQ	0.40	0.200	pass		MGK-264	< LOQ	0.20	0.100	pass	
Myclobutanil	< LOQ	0.20	0.100	pass		Naled	< LOQ	0.50	0.250	pass	
Oxamyl	< LOQ	1.0	0.500	pass		Paclobutrazole	< LOQ	0.40	0.200	pass	
Parathion-Methyl	< LOQ	0.20	0.200	pass		Permethrin	< LOQ	0.20	0.100	pass	
Phosmet	< LOQ	0.20	0.100	pass		Piperonyl butoxide	< LOQ	2.0	1.00	pass	
Prallethrin	< LOQ	0.20	0.200	pass		Propiconazole	< LOQ	0.40	0.200	pass	
Propoxur	< LOQ	0.20	0.100	pass		Pyrethrin I (total)	< LOQ	1.0	0.500	pass	
Pyridaben	< LOQ	0.20	0.100	pass		Spinosad	< LOQ	0.20	0.100	pass	
Spiromesifen	< LOQ	0.20	0.100	pass		Spirotetramat	< LOQ	0.20	0.100	pass	
Spiroxamine	< LOQ	0.40	0.200	pass		Tebuconazole	< LOQ	0.40	0.200	pass	
Thiacloprid	< LOQ	0.20	0.100	pass		Thiamethoxam	< LOQ	0.20	0.100	pass	
Trifloxystrobin	< LOQ	0.20	0.100	pass							



Terpenes				Method J AOAC 2015 V98-6	Units %	Batch 2202040	Analyze 03/08/22 03:53 PM		
Analyte	Result	LOQ	% of Total	Notes	Analyte	Result	LOQ	% of Total	Notes
farnesene [†]	0.110	0.019	26.895%		β-Caryophyllene [†]	0.0904	0.019	22.1027%	
α-Bisabolol [†]	0.0621	0.019	15.1834%		Humulene [†]	0.0355	0.019	8.6797%	
(-)-Isopulegol [†]	0.0345	0.019	8.4352%		(-)-caryophyllene oxide [†]	0.0294	0.019	7.1883%	
β-Myrcene [†]	0.0248	0.019	6.0636%		Menthol [†]	0.0225	0.019	5.5012%	
(-)-Guaiol [†]	< LOQ	0.019	0.00%		Geraniol [†]	< LOQ	0.019	0.00%	
(R)-(+)-Limonene [†]	< LOQ	0.019	0.00%		nerol [†]	< LOQ	0.019	0.00%	
Geranyl acetate [†]	< LOQ	0.019	0.00%		Terpinolene [†]	< LOQ	0.019	0.00%	
Sabinene [†]	< LOQ	0.019	0.00%		γ-Terpinene [†]	< LOQ	0.019	0.00%	
(+)-Pulegone [†]	< LOQ	0.019	0.00%		valencene [†]	< LOQ	0.019	0.00%	
(-)-α-Terpineol [†]	< LOQ	0.019	0.00%		Isoborneol [†]	< LOQ	0.019	0.00%	
(-)-β-Pinene [†]	< LOQ	0.019	0.00%		(±)-cis-Nerolidol [†]	< LOQ	0.019	0.00%	
(±)-trans-Nerolidol [†]	< LOQ	0.019	0.00%		(+)-fenchol [†]	< LOQ	0.019	0.00%	
Eucalyptol [†]	< LOQ	0.019	0.00%		(±)-fenchone [†]	< LOQ	0.019	0.00%	
d-3-Carene [†]	< LOQ	0.019	0.00%		(+)-Borneol [†]	< LOQ	0.019	0.00%	
(+)-Cedrol [†]	< LOQ	0.019	0.00%		(±)-Camphor [†]	< LOQ	0.019	0.00%	
α-cedrene [†]	< LOQ	0.019	0.00%		α-phellandrene [†]	< LOQ	0.019	0.00%	
α-pinene [†]	< LOQ	0.019	0.00%		α-Terpinene [†]	< LOQ	0.019	0.00%	
Camphene [†]	< LOQ	0.019	0.00%		cis-β-Ocimene [†]	< LOQ	0.006	0.00%	
Linalool [†]	< LOQ	0.019	0.00%		p-Cymene [†]	< LOQ	0.019	0.00%	
Sabinene hydrate [†]	< LOQ	0.019	0.00%		trans-β-Ocimene [†]	< LOQ	0.013	0.00%	
Total Terpenes	0.409								



Metals									
Analyte	Result	Limits	Units	LOQ	Batch	Analyze	Method	Status	Notes
Arsenic	< LOQ	0.200	mg/kg	0.0846	2201972	03/07/22	AOAC 2013.06 (mod.)	pass	X
Cadmium	< LOQ	0.200	mg/kg	0.0846	2201972	03/07/22	AOAC 2013.06 (mod.)	pass	X
Lead	< LOQ	0.500	mg/kg	0.0846	2201972	03/07/22	AOAC 2013.06 (mod.)	pass	X
Mercury	< LOQ	0.100	mg/kg	0.0423	2201972	03/07/22	AOAC 2013.06 (mod.)	pass	X



12423 NE Whitaker Way
Portland, OR 97230
503-254-1794



Report Number: 22-002260/D005.R000
Report Date: 03/09/2022
ORELAP#: OR100028
Purchase Order:
Received: 02/28/22 14:02

These test results are representative of the individual sample selected and submitted by the client.

Abbreviations

Limits: Action Levels per OAR-333-007-0400, OAR-333-007-0210, OAR-333-007-0220, CCR title 16-division 42. BCC-section 5723

Limit(s) of Quantitation (LOQ): The minimum levels, concentrations, or quantities of a target variable (e.g., target analyte) that can be reported with a specified degree of confidence.

† = Analyte not NELAP accredited.

Units of Measure

g = Gram

g/ml = Gram per milliliter

µg/g = Microgram per gram

mg/kg = Milligram per kilogram = parts per million (ppm)

mg/1ml = Milligram per 1ml

% = Percentage of sample

% wt = µg/g divided by 10,000

Glossary of Qualifiers

X: Not ORELAP accredited.

Approved Signatory

Derrick Tanner
General Manager



12423 NE Whitaker Way
Portland, OR 97230
503-254-1794



Report Number: 22-002260/D005.R000
Report Date: 03/09/2022
ORELAP#: OR100028
Purchase Order:
Received: 02/28/22 14:02



12423 NE Whitaker Way Portland OR 97230 p.503-254-1794

Cannabis Chain of Custody Record

ORELAP ID: OR100028

Field ID		Date/Time Collected		Analysis Requested										Matrix			Weight	Serving size for edibles	Comments/Metric ID	
				Pesticides - OR 59 compounds	Pesticide Multi-Residue - 379 compounds	Potency	Residual Solvents	Water Activity	Moisture	Terpenes	Micro: Yeast and Mold	Micro: E. Coll and Total Coliform	Heavy Metals	Mycotoxins	Other					
[Redacted]		[Redacted]				X										Liquid TN.				LAZ. NAT Discou
EB21-TN.D.FS.CMSD		2/14/22 5P					X			X	X	X	X							potency 1st
EB21-TN.D.FS.CMSD		2/14/22 5P		X			X													

Purchase Order Number:
Project Number:
Project Name:
 Report Instructions:
 Send to State - METRC
 Email Final Results:
 Fax Final Results
 Cash/Check/CC/Net 30
Other:

Collected By:	Relinquished By:	Date	Time	Received by:	Date	Time	Lab Use Only:
<input checked="" type="checkbox"/> Standard (5 day) <input type="checkbox"/> Rush (3-4 day) (1.5x Standard) <input type="checkbox"/> Priority Rush (2 day) (2x Standard)	[Redacted]	[Redacted]	[Redacted]	[Redacted]	[Redacted]	[Redacted]	Client Alias: Order Number: Proper Container Sample Condition Temperature: 20.6 Shipped Via: Courier Evidence of cooling: <input type="checkbox"/> Yes <input checked="" type="checkbox"/> No

SUBMISSION OF SAMPLES WITH TESTING REQUIREMENTS TO PIXIS WILL BE UNDERSTOOD TO BE AN AGREEMENT FOR SERVICES IN ACCORDANCE WITH THE CONDITIONS LISTED ON THE BACK OF THIS FORM

Revision: 1.02 Control#: CF023
Effective 01/31/2019 Revised 01/31/2019

www.pixislabs.com

Page 1 of 2



12423 NE Whitaker Way
Portland, OR 97230
503-254-1794

Report Number: 22-002260/D005.R000
Report Date: 03/09/2022
ORELAP#: OR100028
Purchase Order:
Received: 02/28/22 14:02



Revision 1 Documen D 7148
Legacy D Workshee Valida ed 04/20/2021

Laboratory Quality Control Results

JAOAC2015 V98-6		Batch ID 2201832						
Laboratory Control Sample								
Analyte	Result	Spike	Units	% Rec	Limits	Evaluation	Notes	
CBDVA	0.00902	0.01	%	90.2	85.0 - 115	Acceptable		
CBDV	0.0109	0.01	%	109	85.0 - 115	Acceptable		
CBE	0.00891	0.01	%	89.1	85.0 - 115	Acceptable		
CBDA	0.00985	0.01	%	98.5	85.0 - 115	Acceptable		
CBGA	0.00894	0.01	%	89.4	85.0 - 115	Acceptable		
CBG	0.00963	0.01	%	96.3	85.0 - 115	Acceptable		
CBD	0.00992	0.01	%	99.2	85.0 - 115	Acceptable		
THCV	0.00939	0.01	%	93.9	85.0 - 115	Acceptable		
d8THCV	0.00972	0.01	%	97.2	85.0 - 115	Acceptable		
THCVA	0.00866	0.01	%	86.6	85.0 - 115	Acceptable		
CBN	0.00995	0.01	%	99.5	85.0 - 115	Acceptable		
exo-THC	0.00893	0.01	%	89.3	85.0 - 115	Acceptable		
d9THC	0.00945	0.01	%	94.5	85.0 - 115	Acceptable		
d8THC	0.00962	0.01	%	96.2	85.0 - 115	Acceptable		
CBL	0.00859	0.01	%	85.9	85.0 - 115	Acceptable		
CBC	0.00982	0.01	%	98.2	85.0 - 115	Acceptable		
THCA	0.00923	0.01	%	92.3	85.0 - 115	Acceptable		
CBCA	0.00939	0.01	%	93.9	85.0 - 115	Acceptable		
CBLA	0.00935	0.01	%	93.5	85.0 - 115	Acceptable		
CBT	0.0113	0.01	%	113	85.0 - 115	Acceptable		

Method Blank

Analyte	Result	LOQ	Units	Limits	Evaluation	Notes
CBDVA	< LOQ	0.003	%	< 0.003	Acceptable	
CBDV	< LOQ	0.003	%	< 0.003	Acceptable	
CBE	< LOQ	0.003	%	< 0.003	Acceptable	
CBDA	< LOQ	0.003	%	< 0.003	Acceptable	
CBGA	< LOQ	0.003	%	< 0.003	Acceptable	
CBG	< LOQ	0.003	%	< 0.003	Acceptable	
CBD	< LOQ	0.003	%	< 0.003	Acceptable	
THCV	< LOQ	0.003	%	< 0.003	Acceptable	
d8THCV	< LOQ	0.003	%	< 0.003	Acceptable	
THCVA	< LOQ	0.003	%	< 0.003	Acceptable	
CBN	< LOQ	0.003	%	< 0.003	Acceptable	
exo-THC	< LOQ	0.003	%	< 0.003	Acceptable	
d9THC	< LOQ	0.003	%	< 0.003	Acceptable	
d8THC	< LOQ	0.003	%	< 0.003	Acceptable	
CBL	< LOQ	0.003	%	< 0.003	Acceptable	
CBC	< LOQ	0.003	%	< 0.003	Acceptable	
THCA	< LOQ	0.003	%	< 0.003	Acceptable	
CBCA	< LOQ	0.003	%	< 0.003	Acceptable	
CBLA	< LOQ	0.003	%	< 0.003	Acceptable	
CBT	< LOQ	0.003	%	< 0.003	Acceptable	

Abbreviations

ND - None Detected at or above MRL
RPD - Relative Percent Difference
LOQ - Limit of Quantitation

Units of Measure:

% - Percent



12423 NE Whitaker Way
Portland, OR 97230
503-254-1794



Report Number: 22-002260/D005.R000
Report Date: 03/09/2022
ORELAP#: OR100028
Purchase Order:
Received: 02/28/22 14:02

Revision 1 Document D 7148
Legacy D Workshee Validated 04/20/2021

Laboratory Quality Control Results

JAOAC2015 V98-6								
Batch ID 2201832								
Sample Duplicate								
Sample ID 22-002235-0001								
Analyte	Result	Org. Result	LOQ	Units	RPD	Limits	Evaluation	Notes
CBDVA	< LOQ	< LOQ	0.003	%	NA	< 20	Acceptable	
CBDV	0.0313	0.0311	0.003	%	0.792	< 20	Acceptable	
CBE	0.0727	0.0739	0.003	%	1.68	< 20	Acceptable	
CBDA	< LOQ	< LOQ	0.003	%	NA	< 20	Acceptable	
CBGA	< LOQ	< LOQ	0.003	%	NA	< 20	Acceptable	
CBG	0.0760	0.0766	0.003	%	0.743	< 20	Acceptable	
CBD	5.20	5.18	0.003	%	0.423	< 20	Acceptable	
THCV	< LOQ	< LOQ	0.003	%	NA	< 20	Acceptable	
d8THCV	< LOQ	< LOQ	0.003	%	NA	< 20	Acceptable	
THCVA	< LOQ	< LOQ	0.003	%	NA	< 20	Acceptable	
CBN	0.0134	0.0138	0.003	%	2.99	< 20	Acceptable	
exo-THC	< LOQ	< LOQ	0.003	%	NA	< 20	Acceptable	
d9THC	0.170	0.172	0.003	%	1.23	< 20	Acceptable	
d8THC	< LOQ	< LOQ	0.003	%	NA	< 20	Acceptable	
CBL	< LOQ	< LOQ	0.003	%	NA	< 20	Acceptable	
CBC	0.177	0.177	0.003	%	0.164	< 20	Acceptable	
THCA	< LOQ	< LOQ	0.003	%	NA	< 20	Acceptable	
CBCA	< LOQ	< LOQ	0.003	%	NA	< 20	Acceptable	
CBLA	< LOQ	< LOQ	0.003	%	NA	< 20	Acceptable	
CBT	0.133	0.132	0.003	%	0.615	< 20	Acceptable	

Abbreviations

ND - None Detected at or above MRL
RPD - Relative Percent Difference
LOQ - Limit of Quantitation

Units of Measure:

% - Percent



12423 NE Whitaker Way
Portland, OR 97230
503-254-1794



Report Number: 22-002260/D005.R000
Report Date: 03/09/2022
ORELAP#: OR100028
Purchase Order:
Received: 02/28/22 14:02

Revision Document ID
Legacy ID Effective

Laboratory Quality Control Results

Residual Solvents		Batch ID: 220 996							
Method Blank	Laboratory Control Sample								
Analyte	Result	LOQ	Notes	Result	Spike	Units	% Rec	Limits	Notes
Propane	ND	200		682	5.2	µg/g	9.2	0	0
Isobutane	ND	200		902	3	µg/g	23	0	0
Butane	ND	200		905	3	µg/g	23.8	0	0
2,2-Dimethylpropane	ND	200		30	936	µg/g	20	0	0
Methanol	ND	200		90	6.0	µg/g	92.5	0	0
Ethylene Oxide	ND	30		69.6	56.2	µg/g	23.8	0	0
2-Methylbutane	ND	200		6.0	630	µg/g	98.8	0	0
Pentane	ND	200		590	6.0	µg/g	98.8	0	0
Ethanol	ND	200		500	630	µg/g	92.0	0	0
Ethyl Ether	ND	200		560	6.0	µg/g	96.9	0	0
2,2-Dimethylbutane	ND	30		59	65	µg/g	96	0	0
Acetone	ND	200		6.0	6.0	µg/g	0.9	0	0
2-Propanol	ND	200		5.0	6.0	µg/g	9.5	0	0
Ethyl Formate	ND	500		300	620	µg/g	80.2	0	0
Acetonitrile	ND	00		8	98	µg/g	96.6	0	0
Methyl Acetate	ND	500		23.0	8.0	µg/g	29.3	0	0
2,3-Dimethylbutane	ND	30			62	µg/g	09.3	0	0
Dichloromethane	ND	60		60	98	µg/g	92	0	0
2-Methylpentane	ND	30		6	6	µg/g	00.0	0	0
M. BE	ND	500		5.0	6.0	µg/g	9.5	0	0
3-Methylpentane	ND	30		63	9	µg/g	9	0	0
Hexane	ND	30		5	6	µg/g	93.9	0	0
Propanol	ND	500		30	620	µg/g	06.8	0	0
Methyl ethyl ketone	ND	500		8.0	0	µg/g	0	0	0
Ethyl acetate	ND	200		6.0	620	µg/g	99	0	0
2-Butanol	ND	200		00	500	µg/g	8.5	0	0
tetrahydrofuran	ND	00		85	500	µg/g	9.2	0	0
Cyclohexane	ND	200		5.0	6.0	µg/g	9.5	0	0
2-methyl propanol	ND	500		550	6.0	µg/g	96.2	0	0
Benzene	ND			5.99	5.62	µg/g	06.6	0	0
Isopropyl Acetate	ND	200		690	6.0	µg/g	05.0	0	0
Heptane	ND	200		660	6.0	µg/g	03	0	0
Butanol	ND	500		00	620	µg/g	0.9	0	0
Propyl Acetate	ND	500		0	620	µg/g	09.3	0	0
Dioxane	ND	00		2	502	µg/g	82	0	0
2-Ethoxyethanol	ND	30		6	6	µg/g	98.2	0	0
Methyl isobutyl ketone	ND	500		20	620	µg/g	06.2	0	0
3-Methyl butanol	ND	500		530	620	µg/g	9	0	0
Ethylene Glycol	ND	200		6	502	µg/g	9.8	0	0
o-cresol	ND	200		56	88	µg/g	93	0	0
Isobutyl Acetate	ND	500		950	00	µg/g		0	0
Pentanol	ND	500		350	630	µg/g	82.8	0	0
Butyl Acetate	ND	500		8.0	660	µg/g	0.8	0	0
Ethyl benzene	ND	200		888	65	µg/g	92.0	0	0
m,p-Xylene	ND	200		8.2	990	µg/g	88	0	0
o-Xylene	ND	200		8.0	9	µg/g	89.6	0	0
Cumene	ND	30		59	9	µg/g	88.8	0	0
Anisole	ND	500		360	650	µg/g	82	0	0
DMSO	ND	500		2.0	630	µg/g	2	0	0
2,2-dimethoxyethane	ND	50		2.0	83	µg/g	8	0	0
diethylamine	ND	500		80	620	µg/g	9	0	0
N,N-dimethylformamide	ND	50		5	95	µg/g	83.8	0	0
N,N-dimethylacetamide	ND	50		356	502	µg/g	0.9	0	0
Pyridine	ND	50		86	86	µg/g	00.0	0	0
2,2-Dichloroethane	ND			25		µg/g	25.0	0	0
Chloroform	ND			22		µg/g	22.0	0	0
trichloroethylene	ND			08		µg/g	08.0	0	0



12423 NE Whitaker Way
Portland, OR 97230
503-254-1794



Report Number: 22-002260/D005.R000
Report Date: 03/09/2022
ORELAP#: OR100028
Purchase Order:
Received: 02/28/22 14:02

Revision Document ID
Legacy ID Effective

QC Sample Duplicate Sample ID: 22 002391 0001

Analyte	Result	Org. Result	LOQ	Units	RPD	Limits	Accept/Fail	Notes
Propane	ND	ND	200	µg/g	0.0	20	Acceptable	
Isobutane	ND	ND	200	µg/g	0.0	20	Acceptable	
Butane	ND	ND	200	µg/g	0.0	20	Acceptable	
2,2 Dimethylpropane	ND	ND	200	µg/g	0.0	20	Acceptable	
Methanol	ND	ND	200	µg/g	0.0	20	Acceptable	
Ethylene Oxide	ND	ND	30	µg/g	0.0	20	Acceptable	
2 Methylbutane	ND	ND	200	µg/g	0.0	20	Acceptable	
Pentane	ND	ND	200	µg/g	0.0	20	Acceptable	
Ethanol	ND	ND	200	µg/g	0.0	20	Acceptable	
Ethyl Ether	ND	ND	200	µg/g	0.0	20	Acceptable	
2,2 Dimethylbutane	ND	ND	30	µg/g	0.0	20	Acceptable	
Acetone	ND	ND	200	µg/g	0.0	20	Acceptable	
2 Propanol	ND	ND	200	µg/g	0.0	20	Acceptable	
Ethyl Formate	ND	ND	500	µg/g	0.0	20	Acceptable	
Acetonitrile	ND	ND	00	µg/g	0.0	20	Acceptable	
Methyl Acetate	ND	ND	500	µg/g	0.0	20	Acceptable	
2,3 Dimethylbutane	ND	ND	30	µg/g	0.0	20	Acceptable	
Dichloromethane	ND	ND	60	µg/g	0.0	20	Acceptable	
2 Methylpentane	ND	ND	30	µg/g	0.0	20	Acceptable	
Methyl Ethyl Ketone	ND	ND	500	µg/g	0.0	20	Acceptable	
3 Methylpentane	ND	ND	30	µg/g	0.0	20	Acceptable	
Hexane	ND	ND	30	µg/g	0.0	20	Acceptable	
Propanol	ND	ND	500	µg/g	0.0	20	Acceptable	
Methyl ethyl ketone	ND	ND	500	µg/g	0.0	20	Acceptable	
Ethyl acetate	ND	ND	200	µg/g	0.0	20	Acceptable	
2 Butanol	ND	ND	200	µg/g	0.0	20	Acceptable	
Tetrahydrofuran	ND	ND	00	µg/g	0.0	20	Acceptable	
Cyclohexane	ND	ND	200	µg/g	0.0	20	Acceptable	
2 methyl propanol	ND	ND	500	µg/g	0.0	20	Acceptable	
Benzene	ND	ND	10	µg/g	0.0	20	Acceptable	
Isopropyl Acetate	ND	ND	200	µg/g	0.0	20	Acceptable	
Heptane	ND	ND	200	µg/g	0.0	20	Acceptable	
Butanol	ND	ND	500	µg/g	0.0	20	Acceptable	
Propyl Acetate	ND	ND	500	µg/g	0.0	20	Acceptable	
Dioxane	ND	ND	00	µg/g	0.0	20	Acceptable	
2 Ethoxyethanol	ND	ND	30	µg/g	0.0	20	Acceptable	
Methyl isobutyl ketone	ND	ND	500	µg/g	0.0	20	Acceptable	
3 Methyl butanol	ND	ND	500	µg/g	0.0	20	Acceptable	
Ethylene Glycol	ND	ND	200	µg/g	0.0	20	Acceptable	
o-xylene	ND	ND	200	µg/g	0.0	20	Acceptable	
Isobutyl Acetate	ND	ND	500	µg/g	0.0	20	Acceptable	
Pentanol	ND	ND	500	µg/g	0.0	20	Acceptable	
Butyl Acetate	ND	ND	500	µg/g	0.0	20	Acceptable	
Ethyl benzene	ND	ND	200	µg/g	0.0	20	Acceptable	
m-p Xylene	ND	ND	200	µg/g	0.0	20	Acceptable	
o Xylene	ND	ND	200	µg/g	0.0	20	Acceptable	
Cumene	ND	ND	30	µg/g	0.0	20	Acceptable	
Anisole	ND	ND	500	µg/g	0.0	20	Acceptable	
DMSO	ND	ND	500	µg/g	0.0	20	Acceptable	
2,4-dimethoxyethane	ND	ND	50	µg/g	0.0	20	Acceptable	
Diethylamine	ND	ND	500	µg/g	0.0	20	Acceptable	
N,N-dimethylformamide	ND	ND	50	µg/g	0.0	20	Acceptable	
N,N-dimethylacetamide	ND	ND	50	µg/g	0.0	20	Acceptable	
Pyridine	ND	ND	50	µg/g	0.0	20	Acceptable	
1,2-Dichloroethane	ND	ND	10	µg/g	0.0	20	Acceptable	
Chloroform	ND	ND	10	µg/g	0.0	20	Acceptable	
1,1-dichloroethylene	ND	ND	10	µg/g	0.0	20	Acceptable	

Abbreviations
 ND None Detected at or above MRL
 RPD Relative Percent Difference
 LOQ Limit of Quantitation

Units of Measure:
 µg/g Microgram per gram or ppm



12423 NE Whitaker Way
 Portland, OR 97230
 503-254-1794

Report Number: 22-002260/D005.R000
Report Date: 03/09/2022
ORELAP#: OR100028
Purchase Order:
Received: 02/28/22 14:02



Rev s o 3 Docume D 3 20
 Legacy D C L C2 Wo ks ee Va da ed 0/30/2020

Laboratory Pesticide Quality Control Results

Method Blank	Units: mg/Kg		Laboratory Control Sample				Batch ID: 0	
Analyte	Blank Result	Blank Limits	Notes	LCS Result	LCS Spke	LCS % Re	Limits	Notes
Abamectin	0.000	< 0.250		1.011	1.000	101.1	77.0	122
Acephate	0.000	< 0.250		1.020	1.000	102.0	70.4	121
Acequinocyl	0.000	< 1.000		3.911	4.000	97.8	82.0	114
Acetamiprid	0.000	< 0.100		0.395	0.400	98.7	68.8	124
Aldicarb	0.000	< 0.200		0.797	0.800	99.7	72.5	125
Azoxystrobin	0.000	< 0.100		0.396	0.400	99.1	73.2	120
Bifenazate	0.000	< 0.100		0.405	0.400	101.4	75.1	140
Bifenthrin	0.000	< 0.100		0.393	0.400	98.2	74.5	117
Boscalid	0.000	< 0.200		0.774	0.800	96.8	72.7	123
Carbaryl	0.000	< 0.100		0.397	0.400	99.3	78.4	116
Carbofuran	0.000	< 0.100		0.394	0.400	98.5	79.5	116
Chlorantraniliprole	0.000	< 0.100		0.414	0.400	103.4	83.8	113
Chlorfenapyr	0.133	< 0.500		1.994	2.000	99.7	71.4	133
Chlorpyrifos	0.000	< 0.100		0.394	0.400	98.4	72.8	115
Clofentazine	0.000	< 0.100		0.381	0.400	95.3	79.0	112
Cyfluthrin	0.033	< 0.500		2.003	2.000	100.2	69.4	124
Cypermethrin	0.000	< 0.500		1.966	2.000	98.3	81.9	113
Daminozide	0.077	< 0.500		2.024	2.000	101.2	71.7	133
Diazinon	0.000	< 0.100		0.409	0.400	102.2	81.9	113
Dichlorvos	0.000	< 0.500		2.005	2.000	100.2	81.7	109
Dimethoate	0.000	< 0.100		0.393	0.400	98.2	82.6	111
Ethoprophos	0.000	< 0.100		0.395	0.400	98.7	79.0	114
Etofenprox	0.000	< 0.200		0.749	0.800	93.7	70.9	132
Etoxazole	0.000	< 0.100		0.400	0.400	100.0	77.7	123
Fenoxycarb	0.000	< 0.100		0.392	0.400	98.0	81.3	114
Fenpyroximate	0.000	< 0.200		0.769	0.800	96.1	81.3	114
Fipronil	0.000	< 0.200		0.791	0.800	98.9	81.9	120
Flonicamid	0.000	< 0.250		0.929	1.000	92.9	68.4	126
Fludioxonil	0.000	< 0.200		0.813	0.800	101.6	74.9	121
Hexythiazox	0.000	< 0.250		1.053	1.000	105.3	71.7	122
Imazalil	0.000	< 0.100		0.401	0.400	100.3	71.8	127
Imidacloprid	0.000	< 0.200		0.784	0.800	98.0	76.8	116
Kresoxim methyl	0.000	< 0.200		0.799	0.800	99.9	76.3	119
Malathion	0.000	< 0.100		0.386	0.400	96.5	73.3	125
Metaxyl	0.000	< 0.100		0.393	0.400	98.3	80.6	112
Methiocarb	0.000	< 0.100		0.386	0.400	96.4	79.1	117
Methomyl	0.000	< 0.200		0.756	0.800	94.5	65.2	121
MGK 264	0.000	< 0.100		0.368	0.400	92.1	76.3	118
Myclobutanil	0.000	< 0.100		0.396	0.400	99.1	75.9	121
Naled	0.000	< 0.250		0.990	1.000	99.0	84.2	107
Oxamyl	0.000	< 0.500		1.956	2.000	97.8	72.9	117
Paclobutrazole	0.000	< 0.200		0.765	0.800	95.6	79.8	116
Parathion Methyl	0.000	< 0.200		0.743	0.800	92.8	73.0	132
Permethrin	0.000	< 0.100		0.413	0.400	103.4	75.6	117
Phosmet	0.000	< 0.100		0.374	0.400	93.5	77.7	119
Piperonyl butoxide	0.000	< 0.500		2.004	2.000	100.2	70.5	131
Prallethrin	0.000	< 0.100		0.404	0.400	101.1	75.8	120
Propiconazole	0.000	< 0.200		0.780	0.800	97.5	80.4	116
Propoxur	0.000	< 0.100		0.385	0.400	96.2	80.0	113
Pyrethrin (Summe)	0.000	< 0.100		0.393	0.413	95.3	71.8	133
Pyridaben	0.000	< 0.100		0.377	0.400	94.2	73.6	124
Spinosad	0.000	< 0.100		0.370	0.388	95.4	72.8	135
Spiromesifen	0.000	< 0.100		0.389	0.400	97.4	76.7	127
Spirotetramat	0.000	< 0.100		0.392	0.400	97.9	81.4	115
Spiroxamine	0.000	< 0.200		0.744	0.800	93.0	79.7	109
ebuconazole	0.000	< 0.200		0.796	0.800	99.5	79.5	117
hiacloprid	0.000	< 0.100		0.391	0.400	97.8	79.5	115
hiamethoxam	0.000	< 0.100		0.379	0.400	94.7	67.1	125
rifloxystrobin	0.000	< 0.100		0.388	0.400	97.1	77.8	115



12423 NE Whitaker Way
 Portland, OR 97230
 503-254-1794



Report Number: 22-002260/D005.R000
 Report Date: 03/09/2022
 ORELAP#: OR100028
 Purchase Order:
 Received: 02/28/22 14:02

Rev s o 3 Docume D 3 20
 Legacy D C L C2 Wo ks ee Va da ed 0/30/2020

Laboratory Pesticide Quality Control Results

AQAC2007.1 & EN 15662		Units: mg/Kg					Batch ID: 0				
Matrix Spk/Matrix Spk Duplicate Recoveries		Sample ID: 22-0022600001									
Analyte	Result	MSR ₅	MSD ₅	Spike	RFD%	Limit	MS% Re	MSD% Re	Limits	Notes	
Abamectin	0.000	0.621	0.986	1.000	45.4%	< 30	62.1%	98.6%	50 150	R	
Acephate	0.000	1.001	1.027	1.000	2.6%	< 30	100.1%	102.7%	50 150		
Acequinocyl	0.000	2.711	3.067	4.000	12.3%	< 30	67.8%	76.7%	50 150		
Acetamiprid	0.000	0.398	0.409	0.400	2.6%	< 30	99.6%	102.2%	50 150		
Aldicarb	0.000	0.807	0.835	0.800	3.3%	< 30	100.9%	104.3%	50 150		
Azoxystrobin	0.000	0.374	0.385	0.400	2.9%	< 30	93.6%	96.3%	50 150		
Bifenazate	0.000	0.444	0.438	0.400	1.2%	< 30	111.0%	109.6%	50 150		
Bifenthrin	0.000	0.354	0.347	0.400	2.2%	< 30	88.6%	86.7%	50 150		
Boscalid	0.000	0.860	0.855	0.800	0.6%	< 30	107.4%	106.8%	50 150		
Carbaryl	0.000	0.380	0.390	0.400	2.7%	< 30	94.9%	97.6%	50 150		
Carbofuran	0.000	0.365	0.380	0.400	4.2%	< 30	91.1%	95.1%	50 150		
Chlorantraniliprole	0.000	0.411	0.431	0.400	4.6%	< 30	102.8%	107.7%	50 150		
Chlorfenapyr	0.138	1.566	1.767	2.000	13.1%	< 30	71.4%	81.5%	50 150		
Chlorpyrifos	0.000	0.388	0.388	0.400	0.1%	< 30	97.0%	97.1%	50 150		
Clofentezine	0.000	0.377	0.379	0.400	0.7%	< 30	94.2%	94.8%	50 150		
Cyfluthrin	0.000	1.532	1.809	2.000	16.5%	< 30	76.6%	90.4%	30 150		
Cypermethrin	0.000	1.566	1.664	2.000	6.1%	< 30	78.3%	83.2%	50 150		
Daminozide	0.072	1.511	1.451	2.000	4.3%	< 30	71.9%	68.9%	30 150		
Diazinon	0.000	0.404	0.411	0.400	1.6%	< 30	101.1%	102.7%	50 150		
Dichlorvos	0.000	1.913	1.967	2.000	2.8%	< 30	95.7%	98.3%	50 150		
Dimethoate	0.000	0.402	0.404	0.400	0.5%	< 30	100.5%	101.0%	50 150		
Ethoprophos	0.000	0.428	0.448	0.400	4.4%	< 30	107.1%	111.9%	50 150		
Etofenprox	0.000	0.629	0.627	0.800	0.3%	< 30	78.7%	78.4%	50 150		
Etoxazole	0.000	0.387	0.365	0.400	5.8%	< 30	96.6%	91.2%	50 150		
Fenoxycarb	0.000	0.380	0.397	0.400	4.6%	< 30	94.9%	99.4%	50 150		
Fenpyroximate	0.000	0.790	0.782	0.800	1.0%	< 30	98.7%	97.8%	50 150		
Fipronil	0.000	0.719	0.741	0.800	3.0%	< 30	89.9%	92.6%	50 150		
Flonicamid	0.000	1.006	1.106	1.000	9.5%	< 30	100.6%	110.6%	50 150		
Fludioxonil	0.000	0.890	0.865	0.800	2.7%	< 30	111.2%	108.2%	50 150		
Hexythiazox	0.000	0.382	0.398	1.000	4.1%	< 30	38.2%	39.8%	50 150	Q	
Imazalil	0.000	0.389	0.407	0.400	4.7%	< 30	97.1%	101.8%	50 150		
Imidacloprid	0.000	0.783	0.817	0.800	4.1%	< 30	97.9%	102.1%	50 150		
Kresoxim methyl	0.000	0.720	0.773	0.800	7.1%	< 30	90.0%	96.7%	50 150		
Malathion	0.000	0.405	0.409	0.400	1.1%	< 30	101.1%	102.3%	50 150		
Metaxyl	0.000	0.396	0.397	0.400	0.3%	< 30	99.0%	99.3%	50 150		
Methiocarb	0.000	0.389	0.404	0.400	3.6%	< 30	97.4%	100.9%	50 150		
Methomyl	0.000	0.789	0.843	0.800	6.7%	< 30	98.6%	105.4%	50 150		
MGK 264	0.000	0.349	0.362	0.400	3.7%	< 30	87.2%	90.5%	50 150		
Myclobutanil	0.000	0.390	0.387	0.400	0.9%	< 30	97.6%	96.8%	50 150		
Naled	0.000	0.883	0.915	1.000	3.5%	< 30	88.3%	91.5%	50 150		
Oxamyl	0.000	2.070	1.992	2.000	3.9%	< 30	103.5%	99.6%	50 150		
Paclobutrazole	0.000	0.775	0.789	0.800	1.8%	< 30	96.9%	98.7%	50 150		
Parathion Methyl	0.000	0.880	0.851	0.800	3.4%	< 30	110.0%	106.4%	30 150		
Permethrin	0.000	0.355	0.409	0.400	14.2%	< 30	88.7%	102.3%	50 150		
Phosmet	0.000	0.367	0.397	0.400	8.0%	< 30	91.6%	99.3%	50 150		
Piperonyl butoxide	0.000	1.936	1.934	2.000	0.1%	< 30	96.8%	96.7%	50 150		
Prallethrin	0.000	0.237	0.222	0.400	6.9%	< 30	59.4%	55.4%	50 150		
Propiconazole	0.000	0.792	0.816	0.800	3.0%	< 30	98.9%	102.0%	50 150		
Propoxur	0.000	0.378	0.381	0.400	0.9%	< 30	94.5%	95.3%	50 150		
Pyrethrin (Summe)	0.000	0.449	0.416	0.413	7.5%	< 30	108.6%	100.7%	50 150		
Pyridaben	0.000	0.251	0.260	0.400	3.5%	< 30	62.8%	65.0%	50 150		
Spinosad	0.000	0.376	0.383	0.388	2.0%	< 30	96.8%	98.8%	50 150		
Spiromesifen	0.000	0.495	0.466	0.400	6.1%	< 30	123.9%	116.5%	50 150		
Spirotetramat	0.000	0.423	0.437	0.400	3.4%	< 30	105.6%	109.3%	50 150		
Spiroxamine	0.000	0.771	0.792	0.800	2.7%	< 30	96.4%	99.0%	50 150		
ebuconazole	0.000	0.834	0.834	0.800	0.1%	< 30	104.3%	104.2%	50 150		
hiacloprid	0.000	0.395	0.408	0.400	3.3%	< 30	98.7%	102.1%	50 150		
hiamethoxam	0.000	0.405	0.441	0.400	8.6%	< 30	101.2%	110.2%	50 150		
rifloxystrobin	0.000	0.392	0.391	0.400	0.2%	< 30	98.0%	97.8%	50 150		



12423 NE Whitaker Way
Portland, OR 97230
503-254-1794

Report Number: 22-002260/D005.R000
Report Date: 03/09/2022
ORELAP#: OR100028
Purchase Order:
Received: 02/28/22 14:02



Revision: 1 Document ID: 7086
Legacy ID: CFL-E57Worksheet Validated 11/04/2020

Terpenes Quality Control Results

Method Reference: EP/5035				Batch D: 2202040					
Method Blank				Laboratory Control Sample					
Analyte	Result	LOQ	Notes	Result	LCS	Units	LCS % Rec	Limits	Notes
a-pinene	<LOQ	< 200		362	500	µg/g	72%	70 - 130	
Camphene	<LOQ	< 200		372	500	µg/g	74%	70 - 130	
Sabinene	<LOQ	< 200		387	500	µg/g	77%	70 - 130	
b-Pinene	<LOQ	< 200		384	500	µg/g	77%	70 - 130	
b-Myrcene	<LOQ	< 200		414	500	µg/g	83%	70 - 130	
a-phellandrene	<LOQ	< 200		376	500	µg/g	75%	70 - 130	
d-3-Caene	<LOQ	< 200		381	500	µg/g	76%	70 - 130	
a-Terpinene	<LOQ	< 200		379	500	µg/g	76%	70 - 130	
p-Cymene	<LOQ	< 200		368	500	µg/g	74%	70 - 130	
D-Limonene	<LOQ	< 200		365	500	µg/g	73%	70 - 130	
Eucalyptol	<LOQ	< 200		363	500	µg/g	73%	70 - 130	
b-α-Camene	<LOQ	< 67		130	167	µg/g	78%	70 - 130	
b-trans-Cimene	<LOQ	< 133		244	333	µg/g	73%	70 - 130	
g-Terpinene	<LOQ	< 200		385	500	µg/g	77%	70 - 130	
Sabinene Hydrate	<LOQ	< 200		361	500	µg/g	72%	70 - 130	
Terpinolene	<LOQ	< 200		366	500	µg/g	73%	70 - 130	
D-Fenchone	<LOQ	< 200		356	500	µg/g	71%	70 - 130	
Linalool	<LOQ	< 200		383	500	µg/g	77%	70 - 130	
Fenchol	<LOQ	< 200		353	500	µg/g	71%	70 - 130	
Camphor	<LOQ	< 200		384	500	µg/g	77%	70 - 130	
Isopuleg	<LOQ	< 200		391	500	µg/g	78%	70 - 130	
Isborneol	<LOQ	< 200		409	500	µg/g	82%	70 - 130	
Borneol	<LOQ	< 200		363	500	µg/g	73%	70 - 130	
DL-Menthol	<LOQ	< 200		398	500	µg/g	80%	70 - 130	
Terpineol	<LOQ	< 200		314	500	µg/g	63%	70 - 130	Q
Nerol	<LOQ	< 200		357	500	µg/g	71%	70 - 130	
Pulegone	<LOQ	< 200		357	500	µg/g	71%	70 - 130	
Geraniol	<LOQ	< 200		383	500	µg/g	77%	70 - 130	
Geranyl Acetate	<LOQ	< 200		412	500	µg/g	82%	70 - 130	
α-Cedrene	<LOQ	< 200		355	500	µg/g	71%	70 - 130	
b-Caryophyllene	<LOQ	< 200		401	500	µg/g	80%	70 - 130	
α-Humulene	<LOQ	< 200		356	500	µg/g	71%	70 - 130	
Valenene	<LOQ	< 200		394	500	µg/g	79%	70 - 130	
cis-Nerolidol	<LOQ	< 200		420	500	µg/g	84%	70 - 130	
α-Farnesene	<LOQ	< 200		389	500	µg/g	78%	70 - 130	
trans-Nerolidol	<LOQ	< 200		380	500	µg/g	76%	70 - 130	
Caryophyllene Oxide	<LOQ	< 200		530	500	µg/g	106%	70 - 130	
Guaiol	<LOQ	< 200		414	500	µg/g	83%	70 - 130	
Cedrol	<LOQ	< 200		443	500	µg/g	89%	70 - 130	
α-Bisabolol	<LOQ	< 200		444	500	µg/g	89%	70 - 130	

Definitions

LOQ	Limit of Quantitation
LCS	Laboratory Control Sample
%REC	Percent Recovery
Q	Matrix interference affecting spike or surrogate recoveries.



12423 NE Whitaker Way
 Portland, OR 97230
 503-254-1794

Report Number: 22-002260/D005.R000
Report Date: 03/09/2022
ORELAP#: OR100028
Purchase Order:
Received: 02/28/22 14:02



Revision: 1 Document ID: 7086
 Legacy ID: CFL-E57Worksheet Validated 11/04/2020

Terpenes Quality Control Results

Method Reference: EPA5035		Batch D: 2202040					
Sample/Sample Duplicate		Sample D: 22-002417-0001					
Analyte	Result	Org. Result	LOQ	Units	% RPD	LIMIT	Notes
a-pinene	2930	2840	188	µg/g	3%	< 20	
Camphene	363	350	188	µg/g	4%	< 20	
Sabinene	1140	1090	188	µg/g	4%	< 20	
b-Pinene	537	513	188	µg/g	5%	< 20	
b-Myrcene	598	592	188	µg/g	1%	< 20	
a-phellandrene	217	220	188	µg/g	1%	< 20	
d-3-Caene	<LOQ	<LOQ	188	µg/g	0%	< 20	
a-Terpinene	634	644	188	µg/g	2%	< 20	
p-Cymene	2150	2070	188	µg/g	4%	< 20	
D-Limonene	8120	8010	188	µg/g	1%	< 20	
Eucalyptol	10600	10400	188	µg/g	2%	< 20	
b-cis-OCimene	<LOQ	<LOQ	62.7	µg/g	0%	< 20	
b-trans-OCimene	<LOQ	<LOQ	125	µg/g	0%	< 20	
g-Terpinene	870	870	188	µg/g	0%	< 20	
Sabinene Hydrate	<LOQ	<LOQ	188	µg/g	0%	< 20	
Terpinolene	<LOQ	<LOQ	188	µg/g	0%	< 20	
D-Fenchone	<LOQ	<LOQ	188	µg/g	0%	< 20	
Linalool	2890	2790	188	µg/g	4%	< 20	
Fenchol	<LOQ	<LOQ	188	µg/g	0%	< 20	
Camphor	<LOQ	<LOQ	188	µg/g	0%	< 20	
Isopuleg	<LOQ	<LOQ	188	µg/g	0%	< 20	
Isborneol	<LOQ	<LOQ	188	µg/g	0%	< 20	
Borneol	<LOQ	<LOQ	188	µg/g	0%	< 20	
DL-Menthol	45800	44300	188	µg/g	3%	< 20	
Terpineol	<LOQ	<LOQ	188	µg/g	0%	< 20	
Nerol	<LOQ	<LOQ	188	µg/g	0%	< 20	
Perylene	<LOQ	<LOQ	188	µg/g	0%	< 20	
Geraniol	<LOQ	<LOQ	188	µg/g	0%	< 20	
Geranyl Acetate	<LOQ	<LOQ	188	µg/g	0%	< 20	
a-Cedrene	<LOQ	<LOQ	188	µg/g	0%	< 20	
b-Caryophyllene	<LOQ	<LOQ	188	µg/g	0%	< 20	
a-Humulene	<LOQ	<LOQ	188	µg/g	0%	< 20	
Valenene	<LOQ	<LOQ	188	µg/g	0%	< 20	
cis-Nerolidol	<LOQ	<LOQ	188	µg/g	0%	< 20	
a-Farnesene	<LOQ	<LOQ	188	µg/g	0%	< 20	
trans-Nerolidol	<LOQ	<LOQ	188	µg/g	0%	< 20	
Caryophyllene Oxide	<LOQ	<LOQ	188	µg/g	0%	< 20	
Guaiol	<LOQ	<LOQ	188	µg/g	0%	< 20	
Cedrol	<LOQ	<LOQ	188	µg/g	0%	< 20	
a-Bisabol	400	385	188	µg/g	4%	< 20	

Definitions

RPD Relative Percent Difference



12423 NE Whitaker Way
 Portland, OR 97230
 503-254-1794



Report Number: 22-002260/D005.R000
Report Date: 03/09/2022
ORELAP#: OR100028
Purchase Order:
Received: 02/28/22 14:02

Explanation of QC Flag Comments:

Code	Explanation
Q	Matrix interferences affecting spike or surrogate recoveries.
Q1	Quality control result biased high. Only non-detect samples reported.
Q2	Quality control outside QC limits. Data considered estimate.
Q3	Sample concentration greater than four times the amount spiked.
Q4	Non-homogenous sample matrix, affecting RPD result and/or % recoveries.
Q5	Spike results above calibration curve.
Q6	Quality control outside QC limits. Data acceptable based on remaining QC.
R	Relative percent difference (RPD) outside control limit.
R1	RPD non-calculable, as sample or duplicate results are less than five times the LOQ.
R2	Sample replicates RPD non-calculable, as only one replicate is within the analytical range.
LOQ1	Quantitation level raised due to low sample volume and/or dilution.
LOQ2	Quantitation level raised due to matrix interference.
B	Analyte detected in method blank, but not in associated samples.
B1	The sample concentration is greater than 5 times the blank concentration.
B2	The sample concentration is less than 5 times the blank concentration.



12423 NE Whitaker Way
Portland, OR 97230
503-254-1794



Report Number: 22-002260/D004.R000
Report Date: 03/09/2022
ORELAP#: OR100028
Purchase Order:
Received: 02/28/22 14:02

Customer: Etz Hayim Holdings
Product identity: EB21-TN.O.FS.CM50
Client/Metric ID: .
Laboratory ID: 22-002260-0002

Summary

Microbiology:

Less than LOQ for all analytes.



12423 NE Whitaker Way
 Portland, OR 97230
 503-254-1794



Report Number: 22-002260/D004.R000
Report Date: 03/09/2022
ORELAP#: OR100028
Purchase Order:
Received: 02/28/22 14:02

Customer: Etz Hayim Holdings
 16427 NE Airport Way
 PORTLAND 97230
 United States of America (USA)

Product identity: EB21-TN.O.FS.CM50

Client/Metric ID: .

Sample Date:

Laboratory ID: 22-002260-0002

Evidence of Cooling: No

Temp: 20.6 °C

Relinquished by: Client

Sample Results

Microbiology

Analyte	Result	Limits	Units	LOQ	Batch	Analyze	Method	Status	Notes
E.coli	< LOQ		cfu/g	10	2201886	03/06/22	AOAC 991.14 (Petrifilm)	X, I	
Total Coliforms	< LOQ		cfu/g	10	2201886	03/06/22	AOAC 991.14 (Petrifilm)	X, I	
Mold (RAPID Petrifilm)	< LOQ		cfu/g	10	2201887	03/07/22	AOAC 2014.05 (RAPID)	X, I	
Yeast (RAPID Petrifilm)	< LOQ		cfu/g	10	2201887	03/07/22	AOAC 2014.05 (RAPID)	X, I	



12423 NE Whitaker Way
Portland, OR 97230
503-254-1794



Report Number: 22-002260/D004.R000
Report Date: 03/09/2022
ORELAP#: OR100028
Purchase Order:
Received: 02/28/22 14:02

These test results are representative of the individual sample selected and submitted by the client.

Abbreviations

Limits: Action Levels per OAR-333-007-0400, OAR-333-007-0210, OAR-333-007-0220, CCR title 16-division 42. BCC-section 5723

Limit(s) of Quantitation (LOQ): The minimum levels, concentrations, or quantities of a target variable (e.g., target analyte) that can be reported with a specified degree of confidence.

Units of Measure

cfu/g = Colony forming units per gram

% wt = µg/g divided by 10,000

Glossary of Qualifiers

I: Insufficient sample received to meet method requirements.

X: Not ORELAP accredited.

Approved Signatory

Derrick Tanner
General Manager



12423 NE Whitaker Way
Portland, OR 97230
503-254-1794

Report Number: 22-002260/D004.R000
Report Date: 03/09/2022
ORELAP#: OR100028
Purchase Order:
Received: 02/28/22 14:02



12423 NE Whitaker Way Portland OR 97230 p.503-254-1794

Cannabis Chain of Custody Record

ORELAP ID: OR100028

		Analysis Requested															
		Pesticides - OR 59 compounds	Pesticide Multi-Residue - 379 compounds	Potency	Residual Solvents	Water Activity	Moisture	Terpenes	Micro: Yeast and Mold	Micro: E. Coll and Total Coliform	Heavy Metals	Mycotoxins	Other	Matrix	Weight	Serving size for edibles	Comments/Metric ID
Field ID	Date/Time Collected																
				X										Liquid TN.			LAZ. NAT Discour
EB21-TN.D.FS.CMSO	2/14/22 SP			X					X	X	X	X					potency 1st
EB21-TN.D.FS.CMSO	2/14/22 SP	X			X												

Purchase Order Number:
Project Number:
Project Name:
 Report Instructions:
 Send to State - METRC
 Email Final Results:
 Fax Final Results
 Cash/Check/CC/Net 30
Other:

Collected By:	Relinquished By:	Date	Time	Received by:	Date	Time	Lab Use Only:
							Client Alias: Order Number: Proper Container Sample Condition Temperature: 20.6 Shipped Via: Courier Evidence of cooling: <input type="checkbox"/> Yes <input checked="" type="checkbox"/> No



12423 NE Whitaker Way
Portland, OR 97230
503-254-1794



Report Number: 22-002260/D004.R000
Report Date: 03/09/2022
ORELAP#: OR100028
Purchase Order:
Received: 02/28/22 14:02

Explanation of QC Flag Comments:

Code	Explanation
Q	Matrix interferences affecting spike or surrogate recoveries.
Q1	Quality control result biased high. Only non-detect samples reported.
Q2	Quality control outside QC limits. Data considered estimate.
Q3	Sample concentration greater than four times the amount spiked.
Q4	Non-homogenous sample matrix, affecting RPD result and/or % recoveries.
Q5	Spike results above calibration curve.
Q6	Quality control outside QC limits. Data acceptable based on remaining QC.
R	Relative percent difference (RPD) outside control limit.
R1	RPD non-calculable, as sample or duplicate results are less than five times the LOQ.
R2	Sample replicates RPD non-calculable, as only one replicate is within the analytical range.
LOQ1	Quantitation level raised due to low sample volume and/or dilution.
LOQ2	Quantitation level raised due to matrix interference.
B	Analyte detected in method blank, but not in associated samples.
B1	The sample concentration is greater than 5 times the blank concentration.
B2	The sample concentration is less than 5 times the blank concentration.